

1.0 Reference and Address			
Report Number	17081033HKG-001	Original Issued: 11-Oct-2017	Revised: 22-Jul-2022
Standard(s)	Luminaires [UL 1598:2021 Ed.5]		
	Luminaires [CSA C22.2#250.0:2021 Ed.5]		
Applicant	Taizhou Jiaoguang Lighting Co., Ltd.	Manufacturer	Taizhou Jiaoguang Lighting Co., Ltd.
Address	1 Wei Er Rd., Taizhou Economic Development Zone, Taizhou City Zhejiang Province	Address	1 Wei Er Rd., Taizhou Economic Development Zone, Taizhou City Zhejiang Province
Country	China	Country	China
Contact	Pan Huixiang	Contact	Pan Huixiang
Phone	86-576-89017122	Phone	86-576-89017122
FAX	NA	FAX	NA
Email	salesdept1@jiaoguang.com	Email	salesdept1@jiaoguang.com

2.0 Product Description	
Product	LED fixed luminaire
Brand name	LIGHT THE FUTURE
Description	The product covered by this report is a LED fixed luminaire, intended for wet location used, with color temperature of 2200K to 7000K, provided with built-in LED driver or integral driverless LED module, provided with assembly accessory.
Models	<p>CN301L-40W or CN302L-70W; may be followed by -; may be followed by three characters; may be followed by -; may be followed by two characters; may be followed by -; may be followed by two letters.</p> <p>CN301D-45W or WP402-26W; may be followed by -; may be followed by three characters; may be followed by -; may be followed by two characters; may be followed by -; may be followed by two letters.</p> <p>WP301D-45W may be followed by -; may be followed by three characters; may be followed by -; may be followed by two letters; may be followed by -; may be followed by four characters.</p> <p>WP302D-60W may be followed by -; may be followed by three characters; may be followed by -; may be followed by two letters; may be followed by -; may be followed by four characters.</p> <p>WP303D-80W may be followed by -; may be followed by three characters; may be followed by -; may be followed by two letters; may be followed by -; may be followed by four characters.</p> <p>WP501D-45W, WP502D-60W, WP503D-80W, WP504D-100W, WP505D-120W or WP506D-150W; may be followed by -; may be followed by three characters; may be followed by -; may be followed by two letters; may be followed by -; may be followed by four characters.</p> <p>CN302D-70W, WP401-13W or WP403-18W; may be followed by -; may be followed by three characters; may be followed by -; may be followed by two characters; may be followed by -; may be followed by two letters.</p> <p>BL201D-35W or BL202D-70W; may be followed by -; may be followed by three characters; followed by -T1 or -T2; may be followed by -; may be followed by two letters; may be followed by -; followed by three letters.</p> <p>SL101-10W, SL102-20W or SL103-30W; may be followed by -; may be followed by three characters; may be followed by -; may be followed by two letters; may be followed by -; followed by three letters.</p> <p>BL201L-35W may be followed by -; may be followed by three characters; followed by -T1 or -T2; may be followed by -; may be followed by two letters; may be followed by -NPC or -PCS. WP701L-15W, WP702L-30W, WP703D-50W or WP704D-70W; may be followed by -; may be followed by three characters; may be followed by -; may be followed by two letters; followed by -NPC or -PCS.</p> <p>UF101D-50W, UF102D-100W, UF103D-150W, UF104D-200W or SL201D-10W; may be followed by -; may be followed by three characters; may be followed by -; may be followed by two letters; may be followed by -; may be followed by two letters.</p> <p>D206- followed by 70-, 80- or 90- ; followed by four numbers; followed by -; followed by one character.</p> <p>D218- followed by 15W-, 20W- or 30W-; followed by 70-, 80- or 90-; followed by four numbers; followed by -; followed by one character.</p> <p>BL301D-40W- followed by two letters; followed by -; followed by four numbers; followed by -; followed by three character.</p> <p>UF105D-250W- or UF106D-300W-; followed by three characters; followed by -; followed by two letters; followed by -; followed by two letters.</p> <p>D234- followed by 70-, 80- or 90-; followed by four numbers; may be followed by -; may be followed by two characters.</p> <p>WP511D-45W, WP512D-60W, WP513D-80W, WP514D-100W, WP515D-120W or WP516D-150W; may be followed by -; may be followed by three characters; may be followed by -; may be followed by two letters; may be followed by -; may be followed by four characters.</p> <p>BL211D-35W or BL212D-70W; followed by -; followed by three characters; followed by -T1 or -T2; followed by -; followed by two letters; followed by -; followed by PCR, PCS or NPC.</p>

2.0 Product Description					
Model Similarity	<p>The products have same construction except that the LED driver and quantity of LED chips are different.</p> <p>"XXX"can be three characters,stands for color, 27K means 2700K, 30K means 3000K, 40K means 4000K, 50K means 5000K; the first "XX"can be two characters,stands for control options, 00 means NO DIMMING, 10 means 0-10V DIMMING, SR means WITH SENSOR; the second "XX"can be two letters, stands for the shell color, BR means Bronze, WH means White, BL means Black.</p>				
	Model	Mounting	Number of LED	Weight	Overall dimension(mm)
	CN301L-40W-XXX-XX-XX	Ceiling	108	2.8	L*244xW*244xH*87
	CN302L-70W-XXX-XX-XX	Ceiling	140	3.1	L*244xW*244xH*87
	<p>The below series products have same construction except that the LED driver and quantity of LED chips are different.</p> <p>"XXX"can be three characters,stands for color, 30K means 2700K, 40K means 4000K, 45K means 4500K, 50K means 5000K,57K means 5700K;</p> <p>the first "XX"can be two characters,stands for control options, 00 means NO DIMMING, 10 means 0-10v DIMMING, SR means Motion Sensor,PC means Photocell.</p> <p>the second "XX"can be two letters, stands for the shell color, BR means Brown, WH means White, BL means Black,GR means Gray.</p>				
	Model	Mounting	Number of LED	Weight (KG)	Overall dimension(mm)
	CN301D-45W-XXX-XX-XX	Ceiling	96	1.8	L*244xW*244xH*87
	WP402-26W-XXX-XX-XX	Wall	42	0.78	L*280xW*140xH*88
	CN302D-70W-XXX-XX-XX	Ceiling	144	1.99	L*244xW*244xH*87
	WP401-13W-XXX-XX-XX	Wall	24	0.72	L*280xW*140xH*88
WP403-18W-XXX-XX-XX	Wall	30	0.73	L*280xW*140xH*88	
<p>The below series products have same construction except that the LED driver and quantity of LED chips are different.</p> <p>"XXX"can be three characters,stands for CCT=0~9900K(00K~99K),00K means 0, 99K means 9900K;</p> <p>"XX"can be two letters, stands for housing color, BR means Brown, WH means White, BL means Black,GR means Gray or other colors;</p> <p>"XXXX"can be Four characters,stands for the control options, NPCR or PCR3 means 3-wire photocell, BLANK means No photocell .</p>					
<p>Driverless LED module BL211D-35W and BL212D-70W are same, except BL211D-35W provide Photoelectric switch.</p> <p>Drivers WP403-18W-10,WP402-26W-10 are same in electrical and mechanical construction. Differences among them are value of electronic components as below.</p>					
Driver model no.	Resistor R18	Resistor R19	Resistor R20	Resistor R21	Transformer T1
WP403-18W-10	1.3Ω	1.3Ω	1.3Ω	1.3Ω	EF20-0.45mH-WP
WP402-26W-10	0.91Ω	0.91Ω	0.91Ω	1Ω	EF20-0.25mH-WP

2.0 Product Description						
Model	Alt.Model	Mounting	Number of LED	Weight (KG)	Overall dimension(mm)	
WP301D-45W-XXX-XX-XXXX	—	Wall	96	2.91	L*362xW*235xH*186	
WP302D-60W-XXX-XX-XXXX	—	Wall	144	2.97	L*362xW*235xH*186	
WP303D-80W-XXX-XX-XXXX	—	Wall	192	2.94	L*362xW*235xH*186	
WP501D-45W-XXX-XX-XXXX	WP511D-45W-XXX-XX-XXXX	Wall	96	3.09	L*362xW*236xH*186	
WP502D-60W-XXX-XX-XXXX	WP512D-60W-XXX-XX-XXXX	Wall	144	3.56	L*362xW*236xH*186	
WP503D-80W-XXX-XX-XXXX	WP513D-80W-XXX-XX-XXXX	Wall	192	3.6	L*362xW*236xH*186	
WP504D-100W-XXX-XX-XXXX	WP514D-100W-XXX-XX-XXXX	Wall	240	6.07	L*362xW*229xH*238	
WP505D-120W-XXX-XX-XXXX	WP515D-120W-XXX-XX-XXXX	Wall	288	7.76	L*362xW*229xH*238	
WP506D-150W-XXX-XX-XXXX	WP516D-150W-XXX-XX-XXXX	Wall	384	7.84	L*362xW*229xH*238	
<p>The below series products have same construction except that the quantity of LED chips are different.</p> <p>The first "XXX" can be three characters, stands for CCT=0~9900K(00K~99K), 00K means 0K, 99K means 9900K;</p> <p>The first "XX" can be T1 or T2, stands for Lens type, T1 means Type 1 lampshade, T2 means Type 2 lampshade.</p> <p>The second "XX" can be two letters, stands for housing color, BR means Brown, WH means White, BL means Black, GR means Gray.</p> <p>The second "XXX" can be three letters, stands for the control options, NPC means No photocontrol, PCR means ANSI TWIST-LOCK Photocontrol Receptacle, PCS means Electronictype Coin-type Photoelectric Switch</p>						
<p>Model:BL211D-35W-XXX-XX-XX-***,BL212D-70W-XXX-XX-XX-***</p> <p>The first "XXX" can be three characters, stands for CCT=0~9900K(00K~99K), 00K means 0K, 99K means 9900K;</p> <p>The first "XX" can be T1 or T2, stands for Lens type, T1 means Type 1 lampshade, T2 means Type 2 lampshade.</p> <p>The second "XX" can be two letters, stands for housing color, BR means Brown, WH means White, BL means Black, GR means Gray.</p> <p>The suffix "****" can be NPC, PCR and PCS, they may be no photocontrol, provided TWIST-LOCK Photocontrol switch or provided Electronictype Coin-type Photoelectric Switch.</p>						

2.0 Product Description				
Model	Mounting	Number of LED	Weight (KG)	Overall dimension(mm)
BL201D-35W-XXX-XX-XX-XXX	Wall or pole	96	1.14	L*319xW*280xH*127
BL202D-70W-XXX-XX-XX-XXX	Wall or pole	192	1.27	L*319xW*280xH*127
BL211D-35W-XXX-XX-XX-***	Wall or pole	96	1.14	L*319xW*280xH*127
BL212D-70W-XXX-XX-XX-***	Wall or pole	192	1.27	L*319xW*280xH*127
<p>The below series products have same construction except that size and quantity of LED chips are different.</p> <p>The first "XXX" can be three characters, stands for CCT=0~9900K(00K~99K), 00K means 0K, 99K means 9900K;</p> <p>The "XX" can be two letters, stands for housing color, BR means Brown, WH means White, BL means Black, GR means Gray.</p> <p>The second "XXX" can be three letters, stands for the control options, PIR means PIR Motion sensor, NMS means no PIR Motion sensor.</p>				
Model	Mounting	Number of LED	Weight (KG)	Overall dimension(mm)
SL101-10W-XXX-XX-XXX	Wall	1pcs COB	0.46	L*184xW*78xH*184
SL102-20W-XXX-XX-XXX	Wall	2pcs COB	0.64	L*175xW*78xH*176
SL103-30W-XXX-XX-XXX	Wall	3pcs COB	0.93	L*184xW*78xH*184
<p>The below series products have same construction except that the quantity of LED chips are different.</p> <p>The first "XXX" can be three characters or blank, stands for CCT=0~9900K(00K~99K), 00K means 0K, 99K means 9900K;</p> <p>The first "XX" can be T1 or T2, stands for Lens type, T1 means Type 1 lampshade, T2 means Type 2 lampshade.</p> <p>The second "XX" can be two letters or blank, stands for housing color, BR means Brown, WH means White, BL means Black, GR means Gray or other colours.</p> <p>The second "XXX" can be three letters, stands for the control options, NPC means No photocontrol, PCS means Photoelectric Switch.</p>				
Model	Mounting	Number of LED	Weight (KG)	Overall dimension(mm)
BL201L-35W-XXX-XX-XX-XXX	Wall or pole	56	1.22	L*319xW*280xH*127
<p>The below series products have same construction except that the quantity of LED chips are different.</p> <p>The first "XXX" can be three characters or blank, stands for CCT=0~9900K(00K~99K), 00K means 0K, 99K means 9900K.</p> <p>The first "XX" can be two letters or blank,, stands for housing color, BR means Brown, WH means White, BL means Black, GR means Gray or other colours.</p> <p>The second "XXX" can be NPC or PCS, stands for the control options, NPC means No photocontrol, PCS means Photoelectric Switch.</p>				
Model	Mounting	Number of LED	Weight (KG)	Overall dimension(mm)
WP701L-15W-XXX-XX-XXX	Wall	28	1.8	L*203xW*184xH*125
WP702L-30W-XXX-XX-XXX	Wall	49	1.76	L*203xW*184xH*125
WP703D-50W-XXX-XX-XXX	Wall	144	4.44	L*270xW*255xH*169
WP704D-70W-XXX-XX-XXX	Wall	192	4.44	L*270xW*255xH*169

2.0 Product Description				
Below LED Driver assemblies GC-35W, WP-15W-XXX and WP-30W-XXX are provided two circuits.(Provided photoelectric control for series models with suffix PCS and No Photoelectric control for series models with suffix NPC)				
LED Driver assembly, WP-15W-XXX-PCS, WP-15W-XXX-NPC and WP-30W-XXX-PCS,WP-30W-XXX-NPC are similar circuit and similar PCB layout, only different additional electronic component/circuit and parameter. Driverless LED module, GC-35W-PCS and GC-35W-NPC are similar circuit and similar PCB, only different electronic component parameter.				
Model	LED Driver assembly		Driverless LED module	
BL201L-35W-XXX-XX-XX-PCS	GC-35W-PCS		--	
BL201L-35W-XXX-XX-XX-NPC	GC-35W-NPC		--	
WP701L-15W-XXX-XX-PCS	WP-15W-PCS		--	
WP701L-15W-XXX-XX-NPC	WP-15W-NPC or WP-15W-XXX		--	
WP702L-30W-XXX-XX-PCS	WP-30W-PCS or WP-30W-XXX		--	
WP702L-30W-XXX-XX-NPC	WP-30W-NPC		--	
WP703D-50W-XXX-XX-PCS, WP703D-50W-XXX-XX-NPC	--		WP703D	
WP704D-70W-XXX-XX-PCS, WP704D-70W-XXX-XX-NPC	--		WP704D	
WP401-13W-XXX-XX-XX	WP401-13W-10 or WP-13W		--	
WP402-26W-XXX-XX-XX	WP402-26W-10 or WP-26W		--	
WP403-18W-XXX-XX-XX	WP403-18W-10 or WP-18W		--	
BL211D-35W-XXX-XX-XX-***	--		BL211D-35W	
BL212D-70W-XXX-XX-XX-***	--		BL212D-70W	
The below series products have same construction except that the LED driver and quantity of LED chips are different. "XXX"can be three characters, stands for CCT=0~9900K(00K~99K), 00K means 0, 99K means 9900K; The first "XX"can be two letters, stands for housing color, BR means Brown, WH means White, BL means Black, GR means Gray or other colors; The second "XX"can be three letters, stands for the control options, NM means no Motion sensor, MS means Motion sensor.				
Model	Mounting	Number of LED	Weight (KG)	Overall dimension(mm)
UF101D-50W-XXX-XX-XX	Ceiling	144	3	Φ280*H60mm
UF102D-100W-XXX-XX-XX	Ceiling	288	3.05	Φ280*H60mm
UF103D-150W-XXX-XX-XX	Ceiling	480	3.58	Φ340*H60mm
UF104D-200W-XXX-XX-XX	Ceiling	576	3.77	Φ400*H60mm
SL201D-10W-XXX-XX-XX	Ceiling/ Wall	28	0.5	L300*W121*H13 0.6

2.0 Product Description

The below series products have same construction except that the driverless LED module and quantity of LED chips are different.

"XX" can be two numbers, stands for 70,80,90, denotes the color rendering index.
"XXXX" can be four numbers, stands for CCT=0~9999, denotes the color temperature.
"X" can be one characters, stands for color code, denotes enclosure color.

D218-15W-XX-XXXX-X,D218-20W-XX-XXXX-X have same PCB layout, the difference are component R1,R2,R3,R4

Model	Mounting	Driverless LED module model	Mounting location	Number of LED	Weight (KG)	Overall dimension(mm)
D206-XX-XXXX-X	Ceiling	SM2318-6CUN-15W D206	Wet	33	0.28	Φ186*H34mm
D218-15W-XX-XXXX-X	Ceiling	SM2318-8CUN-15W-V1.0	Wet	55	0.43	Φ240*H34mm
D218-20W-XX-XXXX-X	Ceiling	SM2318-8CUN-20W-V1.0	Wet	55	0.43	Φ240*H34mm
D218-30W-XX-XXXX-X	Ceiling	SM2318-8CUN-30W-V1.0	Wet	66	0.43	Φ240*H34mm
Driverless LED module	R1、R2	R3、R4				
SM2318-8CUN-15W-V1.0	9.1Ω	20Ω				
SM2318-8CUN-20W-V1.0	6.8Ω	10Ω				

For below model BL301D-40W-XX-XXXX-XXX:
The "XX" can be two letters, stands for enclosure color
The "XXXX" can be four numbers, stands for CCT=0~9999
The "XXX" can be three characters, stands for the control options

Model	Mounting	Driverless LED module model	Mounting location	Number of LED	Weight (KG)	Overall dimension(mm)
BL301D-40W-XX-XXXX-XXX	Wall	BL301D-3030-DOB	Wet	192	1.6	D360*H370

The below series products have same construction except that the driverless LED module.
"XXX" can be three characters, stands for CCT=0~9900K(00K~99K), 00K means 0, 99K means 9900K;
The first "XX" can be two letters, stands for housing color, BR means Brown, WH means White, BL means Black, GR means Gray or other colors;
The second "XX" can be three letters, stands for the control options, NM means no Motion sensor, MS means Motion sensor.

2.0 Product Description						
Model	Mounting	Driverless LED module model	Number of LED	Weight (KG)	Overall dimension(mm)	
UF105D-250W-XXX-XX-XX	Ceiling/ hook pendant/ tube pendant	UF105	720	6.12	Φ450*H60mm	
UF106D-300W-XXX-XX-XX	Ceiling/ hook pendant/ tube pendant	UF106	864	6.12	Φ450*H60mm	
The number 70, 80 or 90 (represents as XX) denotes the color render index. The four numbers (represents as XXXX) denotes the CCT of LED. The last two characters (represents as XX) denotes the outlook color.						
Model	Mounting	Number of LED	Weight (KG)	Overall dimension(mm)		
D234-XX-XXXX D234-XX-XXXX-XX	Ceiling	22	0.11	D126*H16		
Ratings	100-277Vac, 60Hz CN301L-40W-XXX-XX-XX: 40W CN302L-70W-XXX-XX-XX: 70W BL201L-35W-XXX-XX-XX-XXX: 35W WP701L-15W-XXX-XX-XXX: 15W WP702L-30W-XXX-XX-XXX: 30W 120-277Vac, 60Hz CN301D-45W-XXX-XX-XX: 45W WP301D-45W-XXX-XX-XXXX:45W WP302D-60W-XXX-XX-XXXX:60W WP303D-80W-XXX-XX-XXXX:80W WP402-26W-XXX-XX-XX:26W CN302D-70W-XXX-XX-XX:70W WP401-13W-XXX-XX-XX:13W WP403-18W-XXX-XX-XX:18W WP501D-45W-XXX-XX-XXXX:45W WP502D-60W-XXX-XX-XXXX:60W WP503D-80W-XXX-XX-XXXX:80W WP504D-100W-XXX-XX-XXXX:100W WP505D-120W-XXX-XX-XXXX:120W WP506D-150W-XXX-XX-XXXX:150W BL201D-35W-XXX-XX-XX-XXX: 35W BL202D-70W-XXX-XX-XX-XXX: 70W BL211D-35W-XXX-XX-XX-***: 35W BL212D-70W-XXX-XX-XX-***: 70W WP703D-50W-XXX-XX-XXX: 50W WP704D-70W-XXX-XX-XXX: 70W UF101D-50W-XXX-XX-XX: 50W UF102D-100W-XXX-XX-XX: 100W UF103D-150W-XXX-XX-XX: 150W UF104D-200W-XXX-XX-XX: 200W UF105D-250W-XXX-XX-XX: 250W UF106D-300W-XXX-XX-XX: 300W					

2.0 Product Description	
	120Vac, 60Hz SL101-10W-XXX-XX-XXX: 10W SL102-20W-XXX-XX-XXX: 20W SL103-30W-XXX-XX-XXX: 30W SL201D-10W-XXX-XX-XX: 10W D206-XX-XXXX-X: 15W D218-15W-XX-XXXX-X: 15W D218-20W-XX-XXXX-X: 20W D218-30W-XX-XXXX-X: 30W D234-XX-XXXX: 10W D234-XX-XXXX-XX: 10W 110-277Vac, 50/60Hz BL301D-40W-XX-XXXX-XXX: 40W
Other Ratings	NA

3.0 Product Photographs

Photo 24 - Internal view of models WP303D-80W-XXX-XX-XX, Also represent WP301D-45W-XXX-XX-XXXX and WP302D-60W-XXX-XX-XXXX

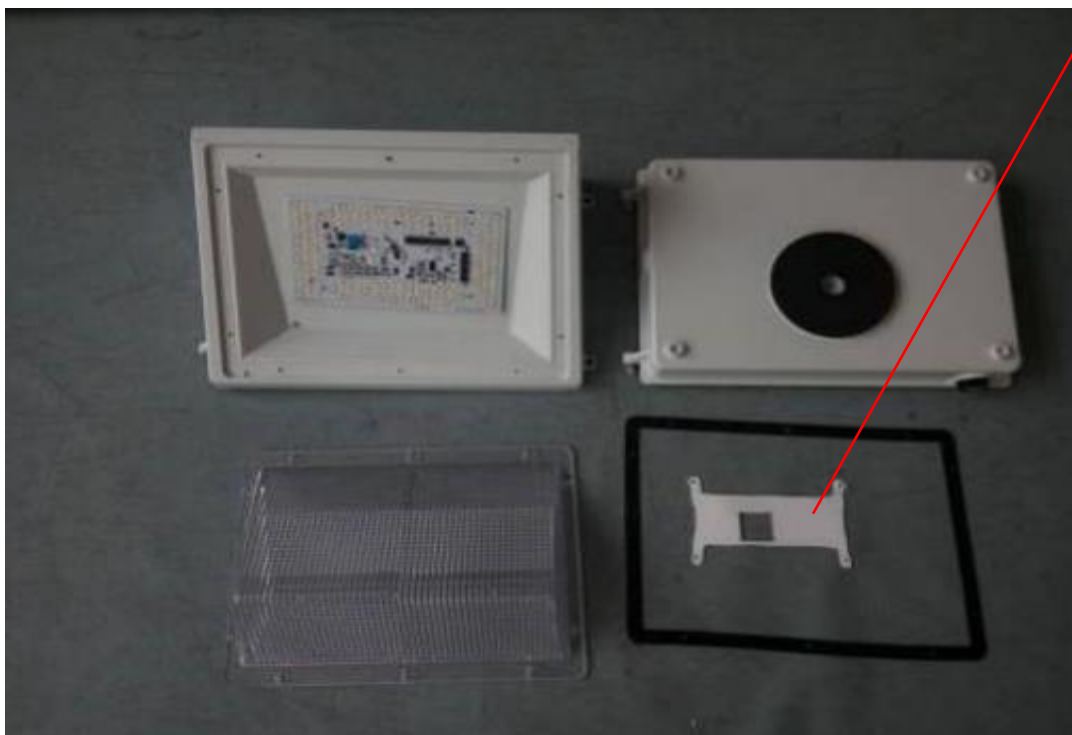


Photo 25 - External view of model WP402-26W-XXX-XX-XX

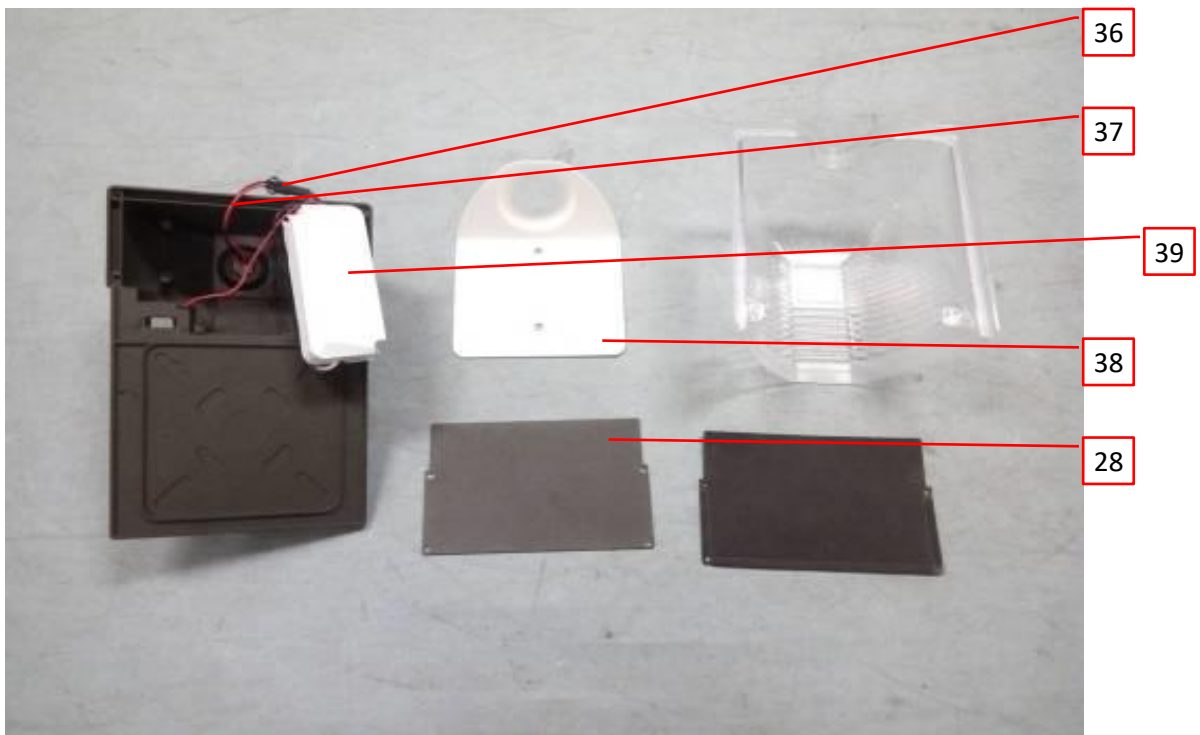


3.0 Product Photographs

Photo 26 - Rear view of model WP402-26W-XXX-XX-XX



Photo 27- Internal view of models WP402-26W-XXX-XX-XX



3.0 Product Photographs

Photo 36 - External view of model WP401-13W-XXX-XX-XX

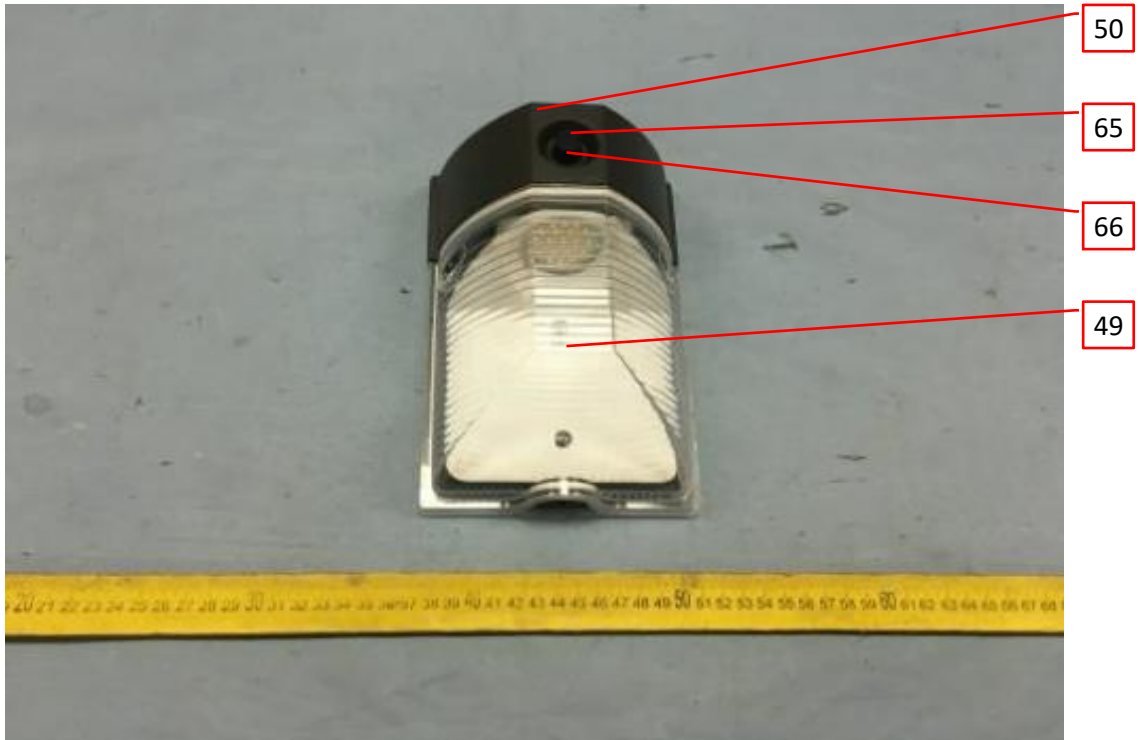
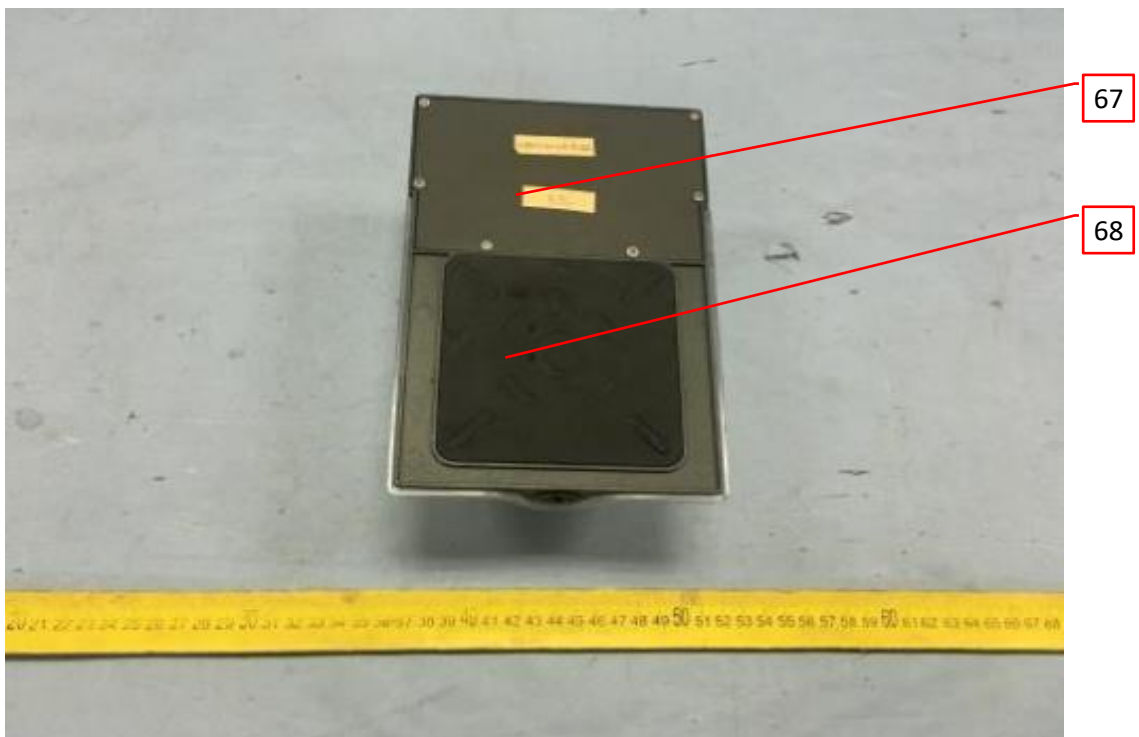


Photo 37 - Rear view of model WP401-13W-XXX-XX-XX



3.0 Product Photographs

Photo 38 - Internal view of models WP401-13W-XXX-XX-XX

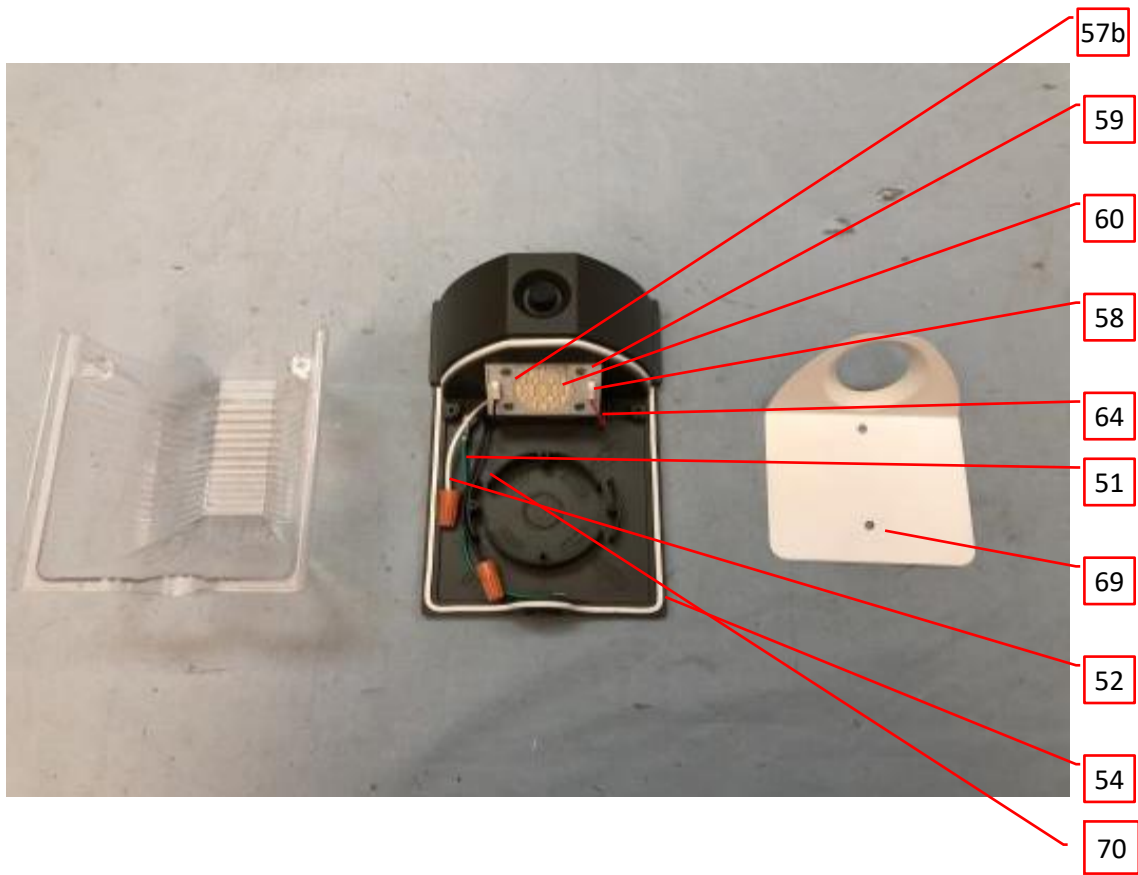
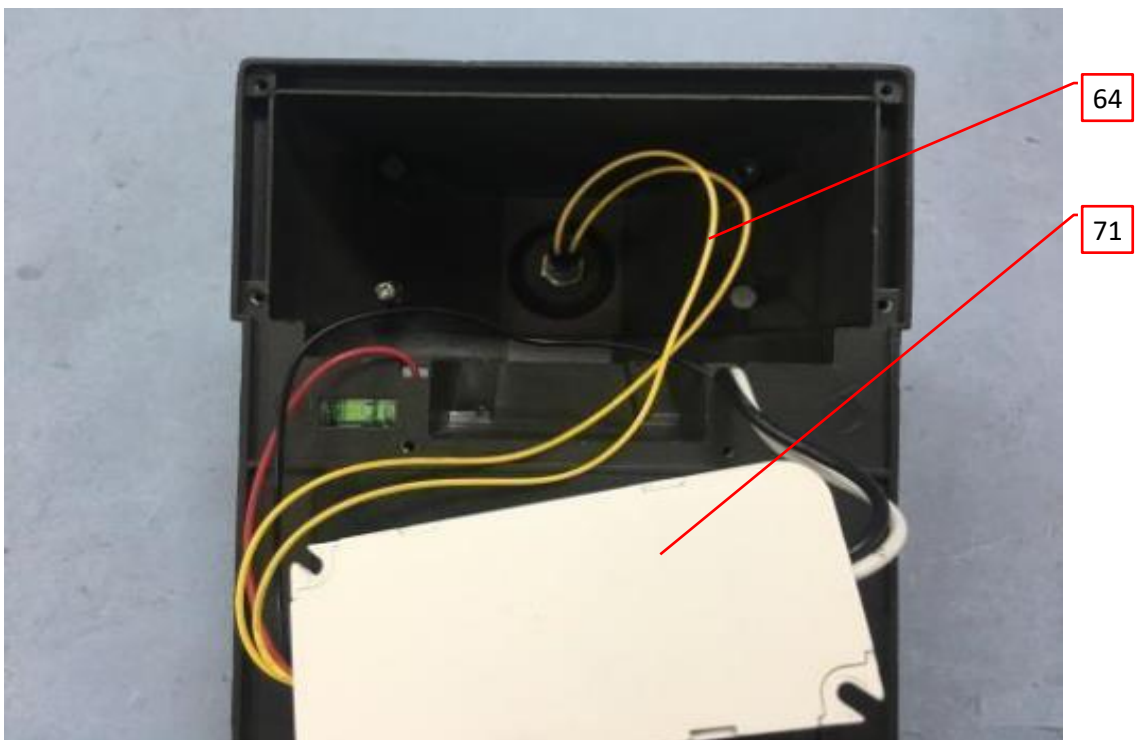


Photo 39 - Internal view of models WP401-13W-XXX-XX-XX



3.0 Product Photographs

Photo 40 - External view of model WP403-18W-XXX-XX-XX

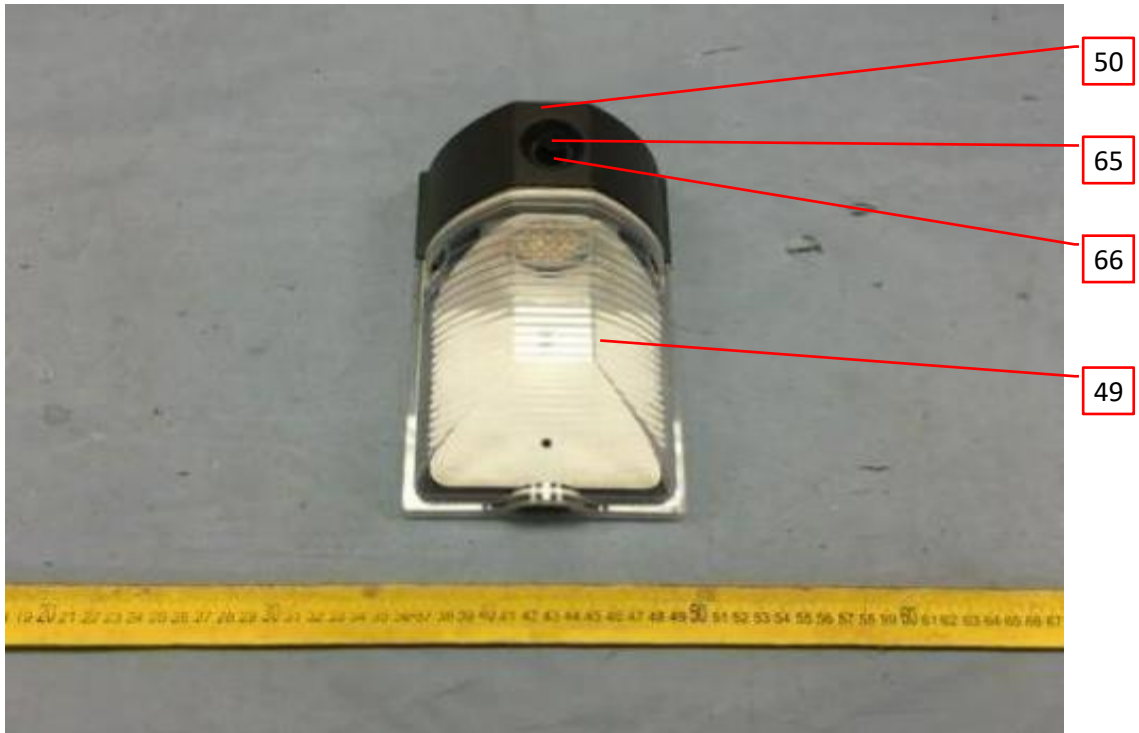
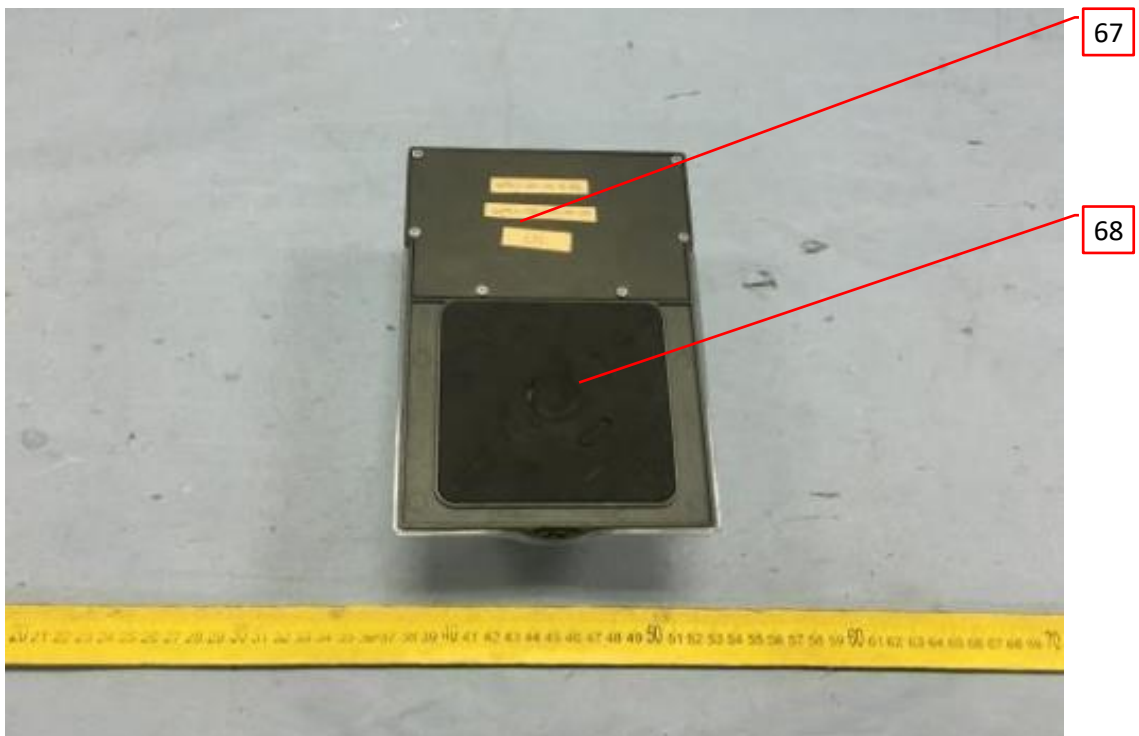


Photo 41 - Rear view of model WP403-18W-XXX-XX-XX



4.0 Critical Components						
Photo #	Item no. ¹	Name	Manufacturer/ trademark ²	Type / model ²	Technical data and securement means	Mark(s) of conformity ³
30	47	Driver PCB	Various	Various	Single layer printed wiring boards, V-0, min.105°C,CTI=3 min.	UR
15, 19, 26	48	Label marking system (not shown)	Various	Various	100°C min., suitable for metal surface, marked on upper side of the trim, comply UL969.	UR
31, 36, 40	49	Diffuser 1	TEIJIN LIMITED RESIN AND PLASTIC	LN-2525Z(#)(f1)	PC, 5VA,115°C, min 3.0mm thick. Secured to metal enclosure by screw.	cURus
32, 36, 40, 47, 58	50	Metal enclosure	Various	Various	Die-cast Aluminum,1.2 mm thick min., provided with mounting holes and 0.5 inch size of conduit openings for models WP401-13W-XXX-XX-XX,WP403-18W-XXX-XX-XX and WP501D-series to WP503D-series.	NR
32	50a	Bushing	Various	Various	rubber,Min. 1.2 mm thick, covered the lead wires in metal opening Metal enclosure.	NR
32, 38, 42, 48, 51, 54, 59, 62, 65	51	Grounding Wire	Various	Various	Green wire or green with a yellow stripe wire, Min300V, 18AWG, Min 105°C, extend 150mm to outlet box/wire compartment.	cURus
32, 38, 42, 45e, 48, 51, 54, 59, 62, 65	52	Input wire	Various	Various	18AWG, min 105°C, min.300V, color black and white, extend 150mm to outlet box/wire compartment.	cURus
32	53	Mounting plate	Various	Various	Galvanized steel or painting steel. 1.35mm thick min. Secured to metal base by screws, provide mounting hole for installed on outlet box.	NR
33, 35, 38, 42	54	Gasket I	Various	Various	Polyethylene,min 1mm,Installed between slot of metal enclosure and Diffuser.	NR
33	55	photoelectric and microwave motion sensor switches (optional)	HYTRONIK ELECTRONICS CO LTD	HC419V	Input 120-277V,60Hz, dimming input:1-10Vdc, TC 71°C,Ta 60°C,Max. Load: 120V/ 5.8A/ 700W, 277V/ 5.8A/1600W Incandescent, or 120V/3.3A/400W, 277V/3.6A/ 1000W Fluorescent. Provided with terminals suitable for 16-20 AWG wire for connection.	cETLus Recognized

4.0 Critical Components						
Photo #	Item no. ¹	Name	Manufacturer/ trademark ²	Type / model ²	Technical data and securement means	Mark(s) of conformity ³
33, 35, 49, 52, 55, 60, 63, 66	56	Reflector I	Various	Various	Reflected film, PET, 110°C, Min. thickness: 0.15mm.	cURus
33	57	Glass fiber sleeving	Various	Various	Min. 0.25 mm thick, covered the lead wires.	NR
34	57a	Driverless LED module 1	Taizhou Jiaoguang Lighting Co., Ltd.	CN102	Dimmable, 120-277Vac, 60Hz, 70W. contained below components:(item 58-62). Refer to Illustration 21 for PCB layout.	NR
38	57b	LED module	Taizhou Jiaoguang Lighting Co., Ltd.	WP-3030-4B6C (13W)	30-39Vdc, 0.32A. Contained below components:(item 58-60). Refer to Illustration 36 for PCB layout.	NR
42	57c	LED module	Taizhou Jiaoguang Lighting Co., Ltd.	WP-3030-5B6C(18W)	30-39Vdc, 0.44A. Contained below components:(item 58-60). Refer to Illustration 38 for PCB layout.	NR
34, 38, 42, 50, 53, 56, 61, 64, 67	58	LED Connector	Various	Various	One pole and two poles, min 250V, min 9A, min 150°C.	cURus
34, 38, 42, 50, 53, 56, 61, 64, 67	59	LED PCB	Various	Various	Single layer metal base, V-0, min 105°C.min CTI=2. 1.1mm thick.	UR
			Various	Various	Single layer printed wiring boards, V-0, min. 105°C.min CTI=2.	UR
34, 38, 42, 50, 53, 56, 61, 64, 67	60	LED	Various	Various	Vf=5.8~6.6Vdc, If=120mA, CCT=2200-7000K.	NR
34, 50, 53, 56, 61, 64, 67	61	Varistor (VR1)	Various	07D511	SPD type 5, 320Vac, 125°C	cURus
			Various	Various	SPD type 5, 320Vac, 125°C	cURus