

| 1.0 Reference and Address | | | |
|---------------------------|---|-----------------------------|---|
| Report Number | 21030090HKG-001 | Original Issued: 8-Jun-2021 | Revised: 21-Jun-2024 |
| Standard(s) | Luminaires [UL 1598:2021 Ed.5+R:18Jun2021] | | |
| | Luminaires [CSA C22.2#250.0:2021 Ed.5+U1] | | |
| Applicant | Torshare Ltd | Manufacturer 1 | Torshare Ltd |
| Address | 5th Minying Road, No. 3 Industrial Area, Shuitian Shiyan Town, Bao'an District, SHENZHEN, Guangdong, 518108 | Address | 5th Minying Road, No. 3 Industrial Area, Shuitian Shiyan Town, Bao'an District, SHENZHEN, Guangdong, 518108 |
| Country | China | Country | China |
| Contact | Ricky Yi | Contact | Ricky Yi |
| Phone | 86-755-36861686 | Phone | 86-755-36861686 |
| FAX | NA | FAX | NA |
| Email | ricky@torshare.com | Email | ricky@torshare.com |
| Manufacturer 2 | Viet Nam Torshare Co Ltd | | |
| Address | L4.8 B Do Son Industrial Ngoc Xuyen | | |
| | WARD DO SON DISTRICT Hai Phong | | |
| Country | VIETNAM | | |
| Contact | Bruce Bian | | |
| Phone | 84-0837123869 | | |
| FAX | NA | | |
| Email | bwm@torshare.com | | |

| 2.0 Product Description | |
|--------------------------------|--|
| Product | LED fixed luminaire |
| Brand name | TORSHARE |
| Description | The product covered by this report is surface mounted LED luminaire, intended for wet locations, provided with supply leads for field wiring connection. |
| Models | <p>TS-GCP0830-28W, TS-GCP0840-40W, TS-GCP1030-28W, TS-GCP1040-40W, TS-GCP1070-60W or TS-GCP1070-70W; may be followed by -G- or -C-; may be followed by one to two characters; followed by -; followed by two numbers; followed by K; may be followed by [; may be followed by PT, MS or PM; may be followed by]; may be followed by -; may be followed by three characters.</p> <p>TS-GCP1040-40W or TS-GCP1070-70W; may be followed by -G- or -C-; may be followed by one to two characters; followed by -; followed by two numbers; followed by K; followed by [; followed by BT, BTP; followed by]; may be followed by -; may be followed by three characters.</p> <p>TS-GCP1060-60W; may be followed by -G- or -C-; may be followed by one to two characters; followed by -; followed by two numbers; followed by K; may be followed by [; may be followed by PT, BT, BTP; may be followed by]; may be followed by -; may be followed by three characters.</p> <p>TS-GCP1060-60W may be followed by -G- or -C-; may be followed by one to two characters; followed by -TCP; may be followed by (PT), (PS), (MS), (EM) or (EMS).</p> <p>TS-GCP1040-40W, TS-GCP1060-60W or TS-GCP1070-70W; may be followed by -G- or -C-; may be followed by one to two characters; followed by -MV; followed by -; followed by two numbers; followed by K; may be followed by [; may be followed by PT, BT, BTP; may be followed by]; may be followed by -; may be followed by three characters.</p> <p>TS-GCP1040-40W, TS-GCP1060-60W or TS-GCP1070-70W; may be followed by -G- or -C-; may be followed by one to two characters; may be followed by -MV; followed by -; followed by TCP; may be followed by [; may be followed by PT, BT, BTP; may be followed by]; may be followed by -; may be followed by three characters.</p> <p>TS-GCP1070-70W; may be followed by -G- or -C-; may be followed by one to two characters; followed by -MV; followed by -; followed by TCP; may be followed by [; may be followed by PT, BT, BTP; may be followed by]; followed by -; followed by two characters; may be followed by -; may be followed by three characters.</p> <p>TS-GCP1070-70W; may be followed by -G- or -C-; may be followed by one to two characters; followed by -MV; followed by -; followed by TCP; may be followed by [; followed by BT, BTP; may be followed by]; followed by -; followed by two characters; followed by -; followed by O; may be followed by -; may be followed by three characters.</p> <p>TS-GCP1040-40W followed by -G- or -C-; followed by up to two characters; followed by -; followed by TC; may be followed by [; may be followed by PT, MS or PM; may be followed by].</p> <p>TS-WPD0204-28W, TS-WPD0204-40W, TS-WPD0608-60W, TS-WPD0608-80W, TS-WPD1012-100W or TS-WPD1012-120W; may be followed by -G- or -C-; may be followed by one to two characters; followed by -; followed by two numbers; followed by K; may be followed by [; may be followed by two characters; may be followed by].</p> <p>TS-WPD0204-28W, TS-WPD0204-40W, TS-WPD0608-60W or TS-WPD0608-80W; may be followed by -G- or -C-; may be followed by one to two characters; followed by -TC; may be followed by [; may be followed by two characters; may be followed by].</p> <p>TS-WP09G followed by -28W, -40W, -60W, -80W, -100W or -120W; may be followed by -G- or -C-; may be followed by one to two characters; followed by -; followed by two numbers; followed by K; may be followed by [; may be followed by PT, MS or PM; may be followed by].</p> |

2.0 Product Description

TS-WP05-28W, TS-WP05-40W, TS-WP05-60W, TS-WP07-28W, TS-WP07-40W, TS-WP07-60W or TS-WP07-80W; may be followed by -G- or -C-; may be followed by one to two characters; followed by -; followed by two numbers; followed by K; may be followed by [; may be followed by PT, MS or PM; may be followed by].

TS-WP05-40W, TS-WP05-60W, TS-WP05-80W, TS-WP07-28W, TS-WP07-40W, TS-WP07-60W or TS-WP07-80W; may be followed by -G- or -C-; may be followed by one to two characters; followed by -TC; may be followed by [; may be followed by PT, MS or PM; may be followed by].

TS-WP11GM- followed by 28W, 40W, 60W, 80W, 100W or 120W; followed by -; may be followed by one to two characters; followed by -; followed by two numbers; followed by K.

TS-WP11GS- followed by 28W, 40W or 60W; followed by -; may be followed by one to two characters; followed by -; followed by two numbers; followed by K.

TS-WP15GM- followed by 28W, 40W, 60W, 80W or 100W; followed by -; may be followed by one to two characters; followed by -; followed by two numbers; followed by K.

TS-WP11GM-100W may be followed by -; may be followed by one to two characters; followed by -TP; may be followed by -; may be followed by two numbers; may be followed by K; may be followed by (PT) or (MS).

TS-WP11GM-100W may be followed by -; may be followed by one to two characters; followed by -TCP; may be followed by (PT) or (MS).

TS-WP15GM- followed by 40W or 100W; may be followed by -; may be followed by one to two characters; followed by -MV; followed by -TCP; may be followed by (PT) or (MS).

TS-WP15GM-100W may be followed by -; may be followed by one to two characters; followed by -TP or -TCP; may be followed by -; may be followed by two numbers; may be followed by K; may be followed by (PT) or (MS).

TS-WP11GM-120W may be followed by -; may be followed by one to two characters; followed by -MV; followed by -TCP; may be followed by (PT) or (MS).

TS-GCP1515-150W may be followed by -G- or -C-; may be followed by one to two characters; may be followed by -TP; may be followed by -; may be followed by two numbers; may be followed by K; may be followed by (PT), (PS) or (MS).

TS-GCP1515-150W may be followed by -G- or -C-; may be followed by one to two characters; followed by -TCP or -TC; may be followed by (PT), (PS) or (MS).

TS-WP16GS-30W-, TS-WP16GS-50W-, TS-WP16GM-80W-, TS-WP16GM-120W- or TS-WP16GM-150W-; may be followed by one to two characters; may be followed by -; may be followed by two numbers; may be followed by K; may be followed by (PT) or (MS).

TS-WP16GS-60W- may be followed by one to two characters; may be followed by -MV; followed by -TCP; may be followed by (PT) or (MS).

TS-WP16GM-100W- or TS-WP16GM-120W-; may be followed by one to two characters; may be followed by -MV; followed by -TCP; may be followed by (PT) or (MS).

TS-WP18-28W-, TS-WP18-40W-, TS-WP18-65W- or TS-WP18-100W-; may be followed by one to two characters; followed by -; followed by two numbers; followed by K; may be followed by (PT) or (MS).

TS-WP17GS-60W-, TS-WP17GM-100W-, TS-WP17GM-120W- or TS-WP17GL-150W-; may be followed by one to two characters; may be followed by -MV; followed by -TCP; may be followed by (PT) or (MS).

2.0 Product Description

Model Similarity
Series TS-GCP are identical in mechanical and similar in electrical construction. Differences among them are size, number of LEDs, LED Driver and total wattage. They are intended for surface ceiling or pole pendant mounted.

Model nomenclature, for example TS-GCP1070-70W-X-X-XX-XXX[XX]-XXX, TS-GCP1070-70W-X-X-XX-XXX[XX]-YY-O-XXX, where:

- The first suffix "X" can be G or C to represent diffuser with different beam angle. It can also be blank.
- The second suffix "X" can be up to two characters represent lighting effect, which is no effect to input power; for example, H=130 lighting effect, L=140 lighting effect H1=150 lighting effect. It can also be blank.
- The suffix "XX" can be MV or blank denote input voltage, blank = 120-277Vac, MV = 120-347Vac;
- The first suffix "XXX" can be XXK or TCP denote the lighting control function; where
 - XXK represent single color temperature (CCT) without power adjustment, where XX can be two numbers such as 30K=3000K;
 - TCP represent adjusting power and color temperature.
- The suffix "[XX]" may be PT, BT, BTP, MS, PM, PS, EM or EMS to represent different Sensor or emergency driver; PT=Photoelectric switches, BT=Bluetooth and motion sensor, BTP=photoelectric switches, Bluetooth and motion sensor, MS=Motion Sensor, PM=photoelectric and microwave motion sensor switches, PS=PIR Sensor, EM=emergency driver, EMS=emergency driver and sensor. blank = no sensor and no emergency driver.
- The suffix "YY" can be two characters to represent color of lamp housing.
- The suffix "O" represents the position of bluetooth and motion sensor, O=external sensor, blank=internal sensor.
- The second suffix "XXX" can be three characters or blank denotes customer code.

| <u>Model No.</u> | <u>Dimension (mm) / (LxWxH)</u> | <u>Max. Weight of product (Kg)</u> | <u>Number of LEDs</u> |
|------------------------------------|---------------------------------|------------------------------------|-----------------------|
| TS-GCP0830-28W-X-X-XXK[XX] | 216*216*82.7mm | 1.722 | 112 |
| TS-GCP0840-40W-X-X-XXK[XX] | 216*216*82.7mm | 1.726 | 140 |
| TS-GCP1030-28W-X-X-XXK[XX] | 255*255*106mm | 2.552 | 112 |
| TS-GCP1040-40W-X-X-XXK[XX] | 255*255*106mm | 2.554 | 140 |
| TS-GCP1070-60W-X-X-XXK[XX] | 255*255*106mm | 2.748 | 238 |
| TS-GCP1070-70W-X-X-XXK[XX] | 255*255*106mm | 2.732 | 210 |
| TS-GCP1040-40W-X-X-TC[XX] | 255*255*106mm | 2.554 | 272 |
| TS-GCP1040-40W-X-X-MV-XXK[XX] | 255*255*106mm | 2.560 | 140 |
| TS-GCP1040-40W-X-X-TCP[XX] | 255*255*106mm | 2.670 | 272 or 266 |
| TS-GCP1040-40W-X-X-MV-TCP[XX] | 255*255*106mm | 2.680 | 272 |
| TS-GCP1060-60W-X-X-XXK[XX] | 255*255*106mm | 2.650 | 210 |
| TS-GCP1060-60W-X-X-TCP[XX] | 255*255*106mm | 3.470 | 258 |
| TS-GCP1060-60W-X-X-MV-XXK[XX] | 255*255*106mm | 2.670 | 210 |
| TS-GCP1070-70W-X-X-MV-XXK[XX] | 255*255*106mm | 2.720 | 238 |
| TS-GCP1070-70W-X-X-TCP[XX] | 255*255*106mm | 2.790 | 308 |
| TS-GCP1070-70W-X-X-MV-TCP[XX] | 255*255*106mm | 2.800 | 308 |
| TS-GCP1070-70W-X-X-MV-TCP[XX]-YY | 255*255*106mm | 2.800 | 308 |
| TS-GCP1070-70W-X-X-MV-TCP[XX]-YY-O | 255*255*106mm | 2.800 | 308 |

2.0 Product Description

Series TS-WP05, TS-WP07 are similar in mechanical and electrical construction. Differences among them are outlook, number of LEDs, LED Driver and total wattage. They are intended for surface wall mounted.

Model nomenclature: for example, TS-WP05-40W-X-X-XXK[XX], TS-WP05-40W-X-X-TC[XX], where

1. The first suffix "X" can be G or C to represent diffuser with different beam angle. It can also be blank.
2. The second suffix "X" can be up to two characters represent lighting effect, which is no effect to input power; for example, H=130 lighting effect, L=140 lighting effect H1=150 lighting effect. It can also be blank.
3. The suffix "XX" can be two numbers to represent color temperature, for example, 30=3000K.
4. The Suffix "TC" represent models provided with DIP colour temperature switch.
5. The suffix "[XX]" can be PT, MS or PM to represent different Sensor; PT=photoelectric switches, MS=Motion Sensor, PM=photoelectric and microwave motion sensor switches.

Series TS-WPD are similar in mechanical and electrical construction. Differences among them are outlook, number of LEDs, LED Driver and total wattage. They are intended for surface wall mounted.

Model nomenclature: for example, TS-WPD0204-28W-X-X-XXK[XX], TS-WPD0204-28W-X-X-TC[XX], where

1. The first suffix "X" can be G or C to represent diffuser with different beam angle. It can also be blank.
2. The second suffix "X" can be up to two characters represent lighting effect, which is no effect to input power; for example, H=130 lighting effect, L=140 lighting effect, H1=150 lighting effect. It can also be blank.
3. The suffix "XX" can be two numbers to represent color temperature, for example, 30=3000K.
4. The Suffix "TC" represent models provided with DIP colour temperature switch.
5. The suffix "[XX]" can be two characters to represent color of Lamp Housing.

| <u>Model No.</u> | <u>Dimension (mm) / (LxWxH)</u> | <u>Max. Weight of product (Kg)</u> | <u>Number of LEDs</u> |
|-------------------------|---------------------------------|------------------------------------|-----------------------|
| TS-WP05-28W-X-X-XXK[XX] | 375*335*505mm | 1.656 | 35 |
| | | | 40 |
| TS-WP05-40W-X-X-XXK[XX] | 375*335*505mm | 1.662 | 56 |
| | | | 60 |
| TS-WP05-60W-X-X-XXK[XX] | 375*335*505mm | 1.948 | 70 |
| | | | 80 |
| TS-WP05-80W-X-X-XXK[XX] | 375*335*505mm | 2.074 | 96 |
| | | | 100 |
| TS-WP05-40W-X-X-TC[XX] | 375*335*505mm | 1.654 | 112 |
| TS-WP05-60W-X-X-TC[XX] | 375*335*505mm | 1.798 | 140 |
| TS-WP05-80W-X-X-TC[XX] | 375*335*505mm | 2.084 | 172 |
| TS-WP07-28W-X-X-XXK[XX] | 395*370*495mm | 2.074 | 35 |
| | | | 40 |

2.0 Product Description

| Model No. | Dimension (mm) / (LxWxH) | Max. Weight of product (Kg) | Number of LEDs |
|-----------------------------|--------------------------|-----------------------------|----------------|
| TS-WP07-40W-X-X-XXK[XX] | 395*370*495mm | 2.088 | 56 |
| | | | 60 |
| TS-WP07-60W-X-X-XXK[XX] | 395*370*495mm | 2.402 | 70 |
| | | | 80 |
| TS-WP07-80W-X-X-XXK[XX] | 395*370*495mm | 2.532 | 96 |
| | | | 100 |
| TS-WP07-28W-X-X-TC[XX] | 395*370*495mm | 2.086 | 70 |
| TS-WP07-40W-X-X-TC[XX] | 395*370*495mm | 2.108 | 112 |
| TS-WP07-60W-X-X-TC[XX] | 395*370*495mm | 2.250 | 140 |
| TS-WP07-80W-X-X-TC[XX] | 395*370*495mm | 2.516 | 192 |
| TS-WPD0204-28W-X-X-XXK[XX] | 265*215*160mm | 1.336 | 35 |
| | | | 40 |
| TS-WPD0204-40W-X-X-XXK[XX] | 265*215*160mm | 1.344 | 56 |
| | | | 60 |
| TS-WPD0608-60W-X-X-XXK[XX] | 335*265*170mm | 2.218 | 70 |
| | | | 80 |
| TS-WPD0608-80W-X-X-XXK[XX] | 335*265*170mm | 2.228 | 96 |
| | | | 100 |
| TS-WPD1012-100W-X-X-XXK[XX] | 390*315*185mm | 3.186 | 120 |
| | | | 120 |
| TS-WPD1012-120W-X-X-XXK[XX] | 390*315*185mm | 3.308 | 144 |
| | | | 140 |
| TS-WPD0204-28W-X-X-TC[XX] | 265*215*160mm | 1.356 | 70 |
| TS-WPD0204-40W-X-X-TC[XX] | 265*215*160mm | 1.354 | 98 |
| TS-WPD0608-60W-X-X-TC[XX] | 335*265*170mm | 2.231 | 140 |
| TS-WPD0608-80W-X-X-TC[XX] | 335*265*170mm | 2.258 | 176 |

Series WP09 are identical in mechanical and similar in electrical construction. Differences among them are number of LEDs, LED Driver and total wattage. They are intended for surface wall mounted.

Model nomenclature: for example, TS-WP09G-28W-X-X-XXK[XX], where

1. The first suffix "X" can be G or C to represent diffuser with different beam angle. It can also be blank.
2. The second suffix "X" can be up to two characters represent lighting effect, which is no effect to input power; for example, H=130 lighting effect, L=140 lighting effect H1=150 lighting effect. It can also be blank.
3. The suffix "XX" can be two numbers to represent color temperature;
4. The suffix "[XX]" can be PT, MS or PM to represent different Sensor; PT=photoelectric switches, MS=Motion Sensor, PM=photoelectric and microwave motion sensor switches.

| Model No. | Dimension (mm) / (LxWxH) | Max. Weight of product (Kg) | Number of LEDs |
|---------------------------|--------------------------|-----------------------------|----------------|
| TS-WP09G-28W-X-X-XXK[XX] | 375*335*245mm | 3.286 | 176 |
| TS-WP09G-40W-X-X-XXK[XX] | 375*335*245mm | 3.464 | 308 |
| TS-WP09G-60W-X-X-XXK[XX] | 375*335*245mm | 3.652 | 484 |
| TS-WP09G-80W-X-X-XXK[XX] | 375*335*245mm | 3.832 | 660 |
| TS-WP09G-100W-X-X-XXK[XX] | 375*335*245mm | 4.144 | 880 |
| TS-WP09G-120W-X-X-XXK[XX] | 375*335*245mm | 4.150 | 1056 |

2.0 Product Description

Series WP11, WP15 are identical in mechanical and similar in electrical construction. Differences among them are number of LEDs, LED Driver and total wattage. They are intended for surface wall mounted.

Model nomenclature: TS-WP11GM-XXW-X-XXK, TS-WP11GS-XXW-X-XXK, TS-WP15GM-XXW-X-XXK, TS-WP11GM-XXW-X-TP-XXK(XX), TS-WP11GM-XXW-X-TCP(XX), TS-WP15GM-XXW-X-MV-TCP(XX), TS-WP15GM-XXW-X-TP-XXK(XX), TS-WP11GM-120W-X-MV-TCP(XX), TS-WP15GM-100W-X-TCP(XX)

where

1. The suffix "XXW" can be 28W, 40W, 60W, 80W, 100W or 120W, denotes lamp input wattage.
2. The suffix "X" can be up to two characters represent lighting effect, which is no effect to input power; for example, H=High lighting effect, L=Ordinary lighting effect. It can also be blank.
3. The suffix "XXK" can be two numbers to represent color temperature, e.g. 30K=3000K.
4. The suffix "TCP" denotes the adjustable Color temperature and adjustable Wattage.
5. The suffix "TP" denotes the adjustable Wattage.
6. The suffix "(XX)" can be (PT), (MS) or blank denote the sensor function; where:
 - a. (MS) denotes provided with Motion Sensor;
 - b. (PT) denotes provided with high voltage photoelectric switches (For models input 120-277V only) or low voltage photocell;
 - c. Blank denotes models without motion Sensor, high voltage photoelectric switches and low voltage photocell.

| <u>Model No.</u> | <u>Dimension (mm) / (LxWxH)</u> | <u>Max. Weight of product (Kg)</u> | <u>Number of LEDs</u> |
|---|---------------------------------|------------------------------------|-----------------------|
| TS-WP11GM-28W-X-XXK | 395*285*240 | 3.350 | 132 |
| TS-WP11GM-40W-X-XXK | | 3.367 | 176 |
| TS-WP11GM-60W-X-XXK | | 3.524 | 264 |
| TS-WP11GM-80W-X-XXK | | 3.537 | 352 |
| TS-WP11GM-100W-X-XXK | | 3.545 | 440 |
| TS-WP11GM-120W-X-XXK | | 3.556 | 528 |
| TS-WP11GM-100W-X-TP-XXK(PT), TS-WP11GM-100W-X-TP-XXK(MS), TS-WP11GM-100W-X-TP-XXK | | 3.675 | 220 or 208 |
| TS-WP11GM-100W-X-TCP(PT), TS-WP11GM-100W-X-TCP(MS), TS-WP11GM-100W-X-TCP | | 3.675 | 242 or 468 or 182 |
| TS-WP11GM-120W-X-MV-TCP(PT), TS-WP11GM-120W-X-MV-TCP(MS), TS-WP11GM-120W-X-MV-TCP | | 3.675 | 728 |
| TS-WP11GS-28W-X-XXK | | 300*250*210 | 1.954 |
| TS-WP11GS-40W-X-XXK | 1.971 | | 176 |
| TS-WP11GS-60W-X-XXK | 2.148 | | 264 |

| 2.0 Product Description | | | |
|--|-------------------------------------|--|---------------------------|
| <u>Model No.</u> | <u>Dimension (mm) / (LxWxH)</u> | <u>Max. Weight of product (Kg)</u> | <u>Number of LEDs</u> |
| TS-WP15GM-28W-X-XXK | 320*235*125 | 2.942 | 88 |
| TS-WP15GM-40W-X-XXK | | 2.955 | 132 |
| TS-WP15GM-60W-X-XXK | | 3.109 | 220 |
| TS-WP15GM-80W-X-XXK | | 3.121 | 264 |
| TS-WP15GM-100W-X-XXK | | 3.142 | 352 |
| TS-WP15GM-40W-X-MV-TCP(PT), TS-WP15GM-40W-X-MV-TCP(MS), TS-WP15GM-40W-X-MV-TCP | | 3.2 | 154 |
| TS-WP15GM-100W-X-MV-TCP(PT), TS-WP15GM-100W-X-MV-TCP(MS), TS-WP15GM-100W-X-MV-TCP | | 3.2 | 330 |
| TS-WP15GM-100W-X-TP-XXK(PT), TS-WP15GM-100W-X-TP-XXK(MS), TS-WP15GM-100W-X-TP-XXK | | 3.2 | 352 or 160 |
| TS-WP15GM-100W-X-TCP(PT), TS-WP15GM-100W-X-TCP(MS), TS-WP15GM-100W-X-TCP | | 3.2 | 320 |
| <p>Series TS-GCP1515 are identical in mechanical and similar in electrical construction. Differences among them are number of LEDs, LED Driver and total wattage. They are intended for surface ceiling (mounted over outlet box) or pole pendant mounted.</p> <p>Model nomenclature: for example, TS-GCP1515-150W-X-X-XXK(XX), TS-GCP1515-150W-X-X-TCP(XX), TS-GCP1515-150W-X-X-TP-XXK(XX)</p> <ol style="list-style-type: none"> The first suffix "X" can be G or C to represent diffuser with different beam angle. It can also be blank. The second suffix "X" can be up to two characters represent lighting effect, which is no effect to input power. It can also be blank. The suffix "XX" can be two numbers to represent color temperature; The suffix "TCP" denotes the adjustable Color temperature and adjustable Wattage. The suffix "TP" denotes the adjustable Wattage. The suffix "(XX)" can be (PT), (PS), (MS) or blank denote the sensor function; where: <ol style="list-style-type: none"> (PT) denotes provided with photoelectric switches. (PS) denotes provided with PIR Sensor. (MS) denotes provided with Motion Sensor; Blank denotes models without motion Sensor, photoelectric switches and PIR Sensor. | | | |
| <u>Model No.</u> | <u>Dimension (mm) / (LxWxH)</u> | <u>Max. Weight of product (Kg)</u> | <u>Number of LEDs</u> |
| TS-GCP1515-150W-X-X-XXK(XX) | 385*385*83.1 | 3.7 | 312 |
| TS-GCP1515-150W-X-X-TP-XXK(XX) | 385*385*83.1 | 3.7 | 312 |
| TS-GCP1515-150W-X-X-TCP(XX) | 385*385*83.1 | 3.7 | 416 |
| TS-GCP1515-150W-X-X-TC(XX) | 385*385*83.1 | 3.7 | 416 |

2.0 Product Description

Series TS-WP16GS, TS-WP16GM are identical in mechanical and similar in electrical construction. Differences among them are number of LEDs, LED Driver and total wattage. They are intended for surface wall mounted.

Model nomenclature: for example, TS-WP16GM-120W-X-MV-TCP(XX), TS-WP16GS-30W-X-XXK(XX)

1. The suffix "X" can be up to two characters represent lighting effect, which is no effect to input power. It can also be blank.
2. The suffix "MV" denote input voltage, MV=120-347Vac, blank=120-277Vac;
3. The suffix "TCP" denotes the adjustable Color temperature and adjustable Wattage.
4. The suffix "XX" can be two numbers to represent color temperature.
5. The suffix "(XX)" can be (PT), (MS) or blank denote the sensor function; where:
 - a. (PT) denotes provided with photoelectric switches.
 - b. (MS) denotes provided with Motion Sensor;
 - c. Blank denotes models without motion Sensor, photoelectric switches.

| Model No. | Dimension (mm) / (LxWxH) | Max. Weight of product (Kg) | Number of LEDs |
|-----------------------------|-----------------------------|--------------------------------|-----------------------|
| TS-WP16GS-30W-X-XXK(XX) | 275*235*147 | 1.87 | 104 |
| TS-WP16GS-50W-X-XXK(XX) | 275*235*147 | 1.87 | 156 |
| TS-WP16GM-80W-X-XXK(XX) | 339*250*147 | 2.6 | 182 |
| TS-WP16GM-120W-X-XXK(XX) | 339*250*147 | 2.6 | 312 or 416 |
| TS-WP16GM-150W-X-XXK(XX) | 339*250*147 | 2.6 | 416 |
| TS-WP16GS-60W-X-TCP(XX) | 275*235*147 | 1.87 | 240, 260 or 280 |
| TS-WP16GM-100W-X-TCP(XX) | 339*250*147 | 2.6 | 416 or 400 |
| TS-WP16GM-120W-X-TCP(XX) | 339*250*147 | 2.6 | 416 or 400 |
| TS-WP16GS-60W-X-MV-TCP(XX) | 275*235*147 | 1.87 | 260 or 240 |
| TS-WP16GM-100W-X-MV-TCP(XX) | 339*250*147 | 2.6 | 416 or 400 |
| TS-WP16GM-120W-X-MV-TCP(XX) | 339*250*147 | 2.6 | 416 or 400 |

Series TS-WP18 are identical in mechanical and similar in electrical construction. Differences among them are number of LEDs, LED Driver and total wattage. They are intended for surface wall mounted.

Model nomenclature: for example, TS-WP18-28W-X-XXK(XX)

1. The suffix "X" can be up to two characters represent lighting effect, which is no effect to input power. It can also be blank.
2. The suffix "XX" can be two numbers to represent color temperature.
5. The suffix "(XX)" can be (PT), (MS) or blank denote the sensor function; where:
 - a. (PT) denotes provided with photoelectric switches.
 - b. (MS) denotes provided with Motion Sensor;
 - c. Blank denotes models without motion Sensor, photoelectric switches.

| Model No. | Dimension (mm) / (LxWxH) | Max. Weight of product (Kg) | Number of LEDs |
|------------------------|-----------------------------|--------------------------------|-------------------|
| TS-WP18-28W-X-XXK(XX) | 321.7*188.1*129.6 | 1.82 | 42 |
| TS-WP18-40W-X-XXK(XX) | 321.7*188.1*129.6 | 1.82 | 70 |
| TS-WP18-65W-X-XXK(XX) | 321.7*188.1*129.6 | 1.82 | 112 |
| TS-WP18-100W-X-XXK(XX) | 321.7*188.1*129.6 | 1.82 | 120 |

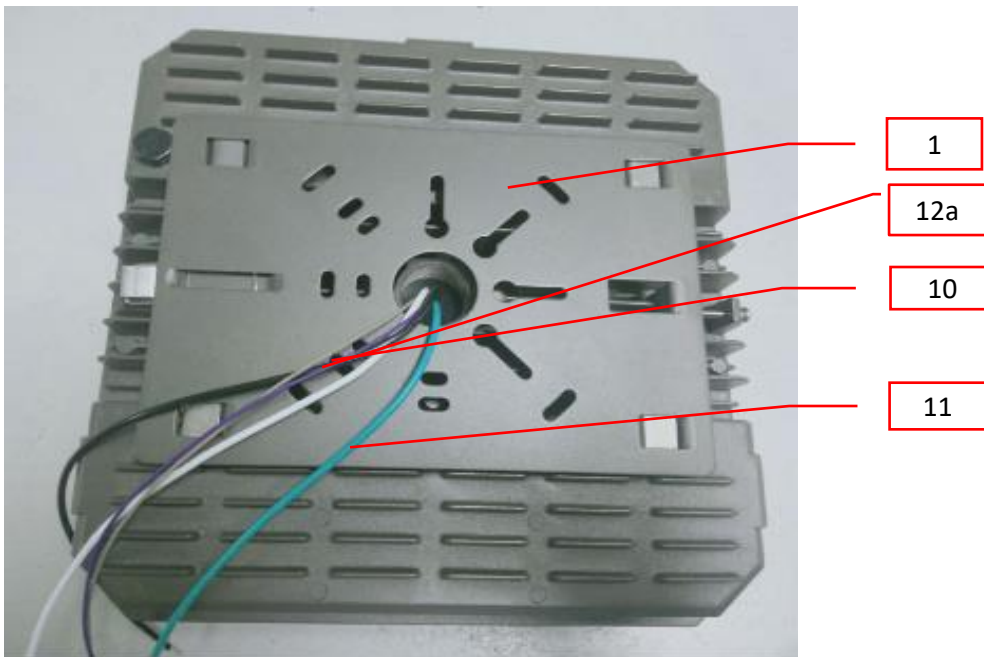
| 2.0 Product Description | | | |
|--|--|--|---------------------------|
| <p>Series TS-WP17GS, TS-WP17GM, TS-WP17GL are identical in mechanical and similar in electrical construction. Differences among them are number of LEDs, LED Driver and total wattage. They are intended for surface wall mounted.</p> <p>Model nomenclature: for example, TS-WP17GS-60W-X-MV-TCP(XX)</p> <ol style="list-style-type: none"> The suffix "X" can be up to two characters represent lighting effect, which is no effect to input power. It can also be blank. The letters "MV" or blank denote input voltage, MV=120-347Vac, blank=120-277Vac; The suffix "TCP" denotes the adjustable Color temperature and adjustable Wattage. The suffix "(XX)" can be (PT), (MS) or blank denote the sensor function; where: <ol style="list-style-type: none"> (PT) denotes provided with photoelectric switches. (MS) denotes provided with Motion Sensor; Blank denotes models without motion Sensor, photoelectric switches. | | | |
| <u>Model No.</u> | <u>Dimension (mm) / (LxWxH)</u> | <u>Max. Weight of product (Kg)</u> | <u>Number of LEDs</u> |
| TS-WP17GS-60W-X-TCP(XX) | 221.8*235*108 | 2.26 | 286 |
| TS-WP17GM-100W-X-TCP(XX) | 349.8*235*108 | 3.48 | 546 |
| TS-WP17GM-120W-X-TCP(XX) | 349.8*235*108 | 3.48 | 546 |
| TS-WP17GL-150W-X-TCP(XX) | 452.3*315*108 | 5.98 | 702 |
| TS-WP17GS-60W-X-MV-TCP(XX) | 221.8*235*108 | 2.26 | 286 |
| TS-WP17GM-100W-X-MV-TCP(XX) | 349.8*235*108 | 3.48 | 546 |
| TS-WP17GM-120W-X-MV-TCP(XX) | 349.8*235*108 | 3.48 | 546 |
| TS-WP17GL-150W-X-MV-TCP(XX) | 452.3*315*108 | 5.98 | 702 |
| Ratings | Refer to Sec. 7.0 III. 35-35e. | | |
| Other Ratings | Ta=45°C for all models except model TS-WP16GM-150W-X-XXK(XX). Ta=30°C for model TS-WP16GM-150W-X-XXK(XX). | | |

3.0 Product Photographs

Photo 1 - External view of TS-GCP1070-70W-X-X-XXX[XX], also represents TS-GCP series.



Photo 2 - External view of TS-GCP1070-70W-X-X-XXX[XX], also represents TS-GCP series



3.0 Product Photographs

Photo 2c - External view of alternative construction (bluetooth and motion sensor 3, 4, 5) for model TS-GCP1070-70W-X-X-MV-TCP[BT]-YY, TS-GCP1070-70W-X-X-MV-TCP[BTP]-YY

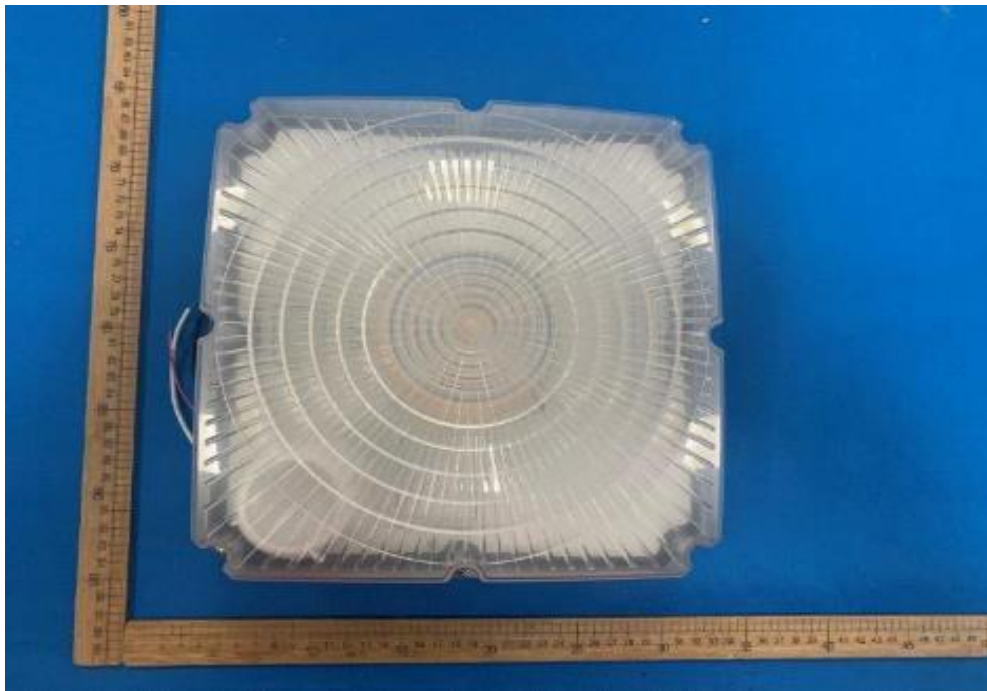
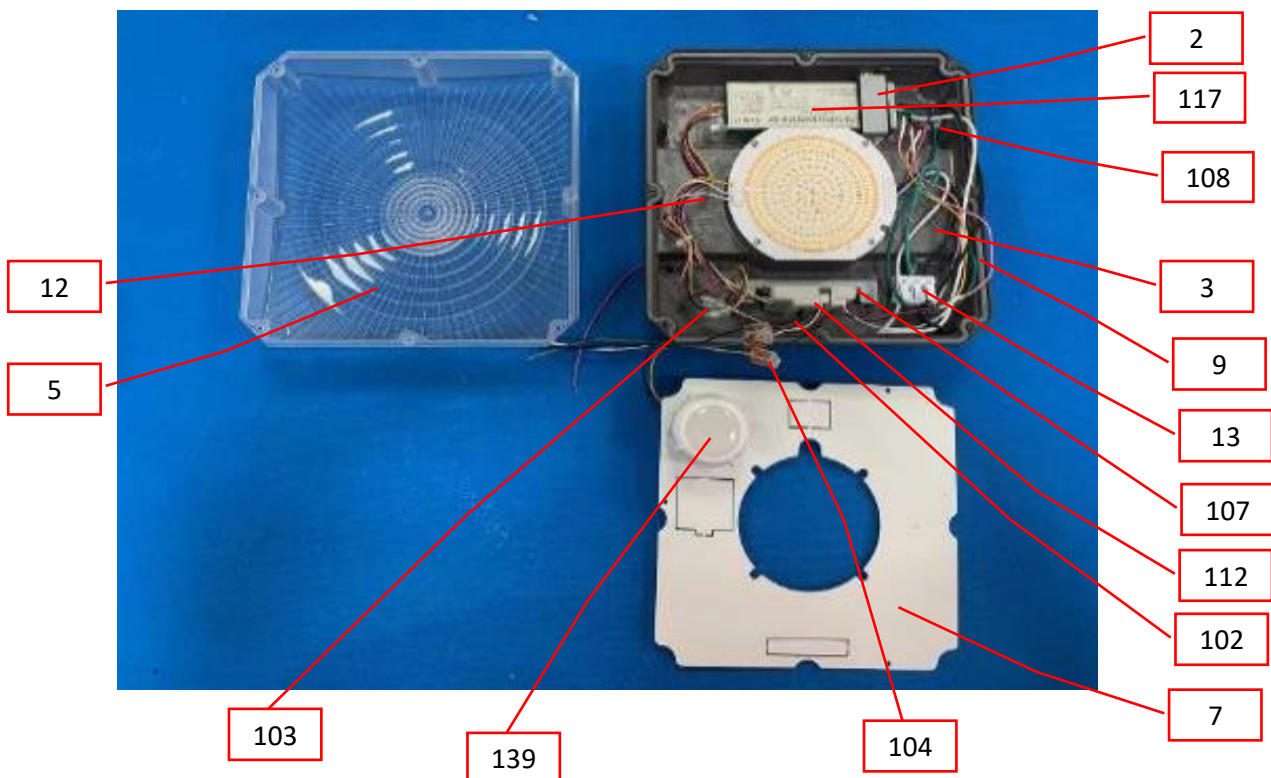


Photo 2d - Internal view of alternative construction (bluetooth and motion sensor 3, 4, 5) for model TS-GCP1070-70W-X-X-MV-TCP[BTP]-YY, also represents of models TS-GCP1070-70W-X-X-MV-TCP[BT]-YY.



3.0 Product Photographs

Photo 2e - External view of alternative construction (motion sensor view) for models TS-GCP1070-70W-X-X-TCP[XX], TS-GCP1070-70W-X-X-MV-TCP[XX], TS-GCP1040-40W-X-X-TCP[XX], where XX=PT, BT or BTP

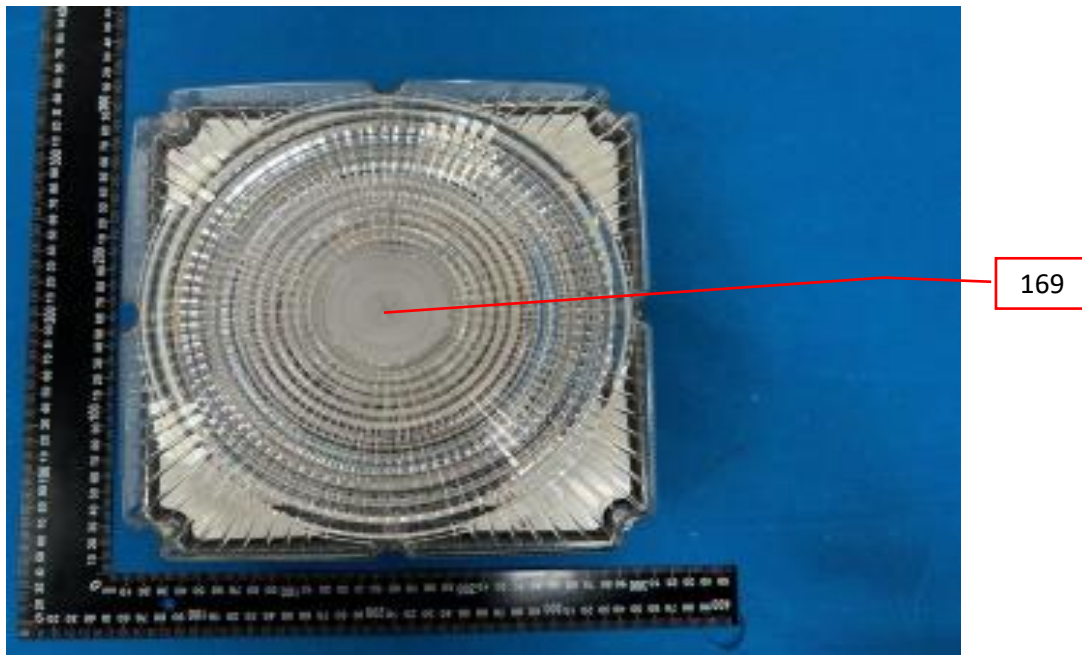
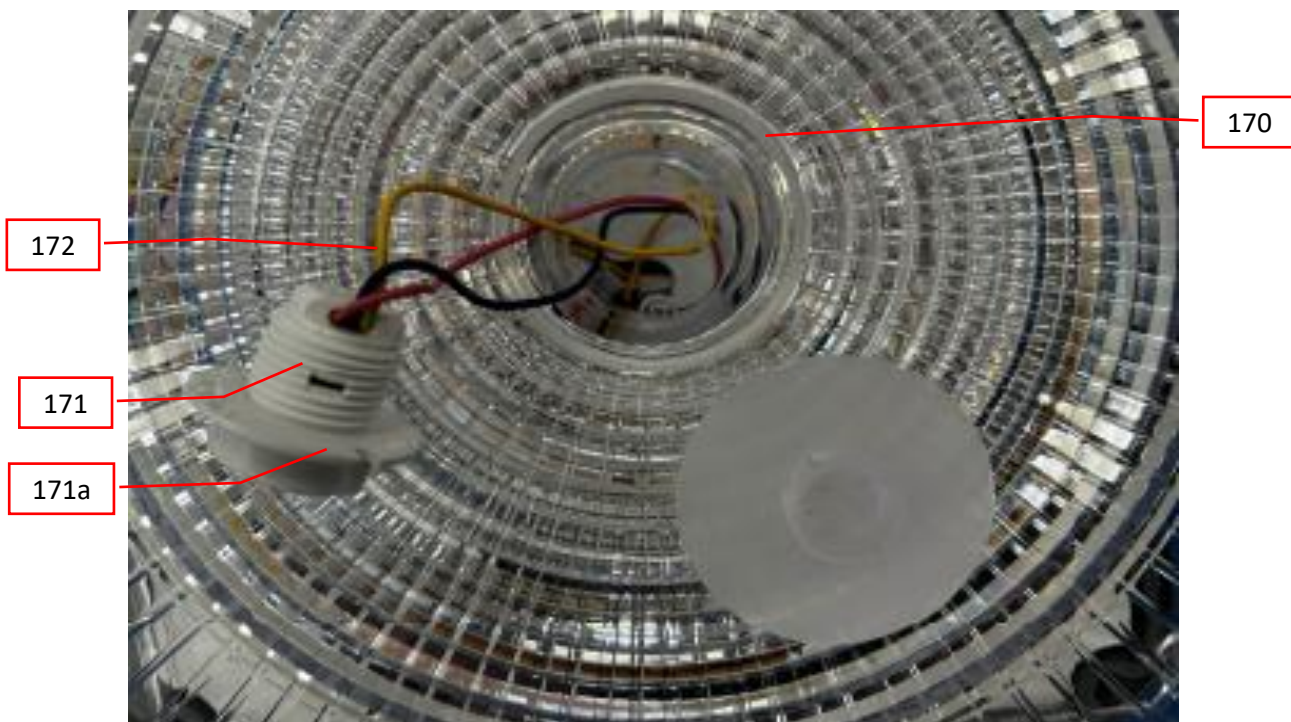


Photo 2f - Internal view of alternative construction (motion sensor view) for models TS-GCP1070-70W-X-X-TCP[XX], TS-GCP1070-70W-X-X-MV-TCP[XX], TS-GCP1040-40W-X-X-TCP[XX], where XX=PT, BT or BTP



3.0 Product Photographs

Photo 2h1 - LED PCB view of model TS-GCP1040-40W-X-X-TCP[XX] using driver BQE40C-130-PVF-Z

