

1.0 Reference and Address			
Report Number	210900687HZH-001	Original Issued: 1-Dec-2021	Revised: 18-Jun-2024
Standard(s)	Luminaires [UL 1598:2021 Ed.5+R:18Jun2021]		
	Luminaires [CSA C22.2#250.0:2021 Ed.5+U1]		
Applicant	Torshare Ltd	Manufacturer 1	<b>Torshare Ltd</b>
Address	5th Minying Road, No. 3 Industrial Area Shuitian Shiyuan Town, Bao'an District, SHENZHEN Guangdong 518108	Address	5th Minying Road, No. 3 Industrial Area Shuitian Shiyuan Town, Bao'an District, SHENZHEN Guangdong 518108
Country	China	Country	China
Contact	Ricky Yi	Contact	Ricky Yi
Phone	86-755-36861686	Phone	86-755-36861686
FAX	NA	FAX	NA
Email	ricky@torshare.com	Email	ricky@torshare.com
Manufacturer 2	<b>Viet Nam Torshare Co Ltd</b>		
Address	L4.8 B Do Son Industrial Ngoc Xuyen WARD DO SON DISTRICT Hai Phong		
Country	VIETNAM		
Contact	Bruce Bian		
Phone	84-0837123869		
FAX	NA		
Email	bwm@torshare.com		

<b>2.0 Product Description</b>	
Product	LED Fixed Luminaires
Brand name	Torshare
Description	<p>These products covered by this report are surface mounted LED luminaire intended for damp location use. Provided with flexible cord for supply connections.</p>
Models	<p>TS-FHB1-80W-, TS-FHB2-140W-, TS-FHB3-140W-, TS-FHB3-165W-, TS-FHB5-225W-, TS-FHB5-300W- or TS-FHB5-165W-; followed by up to two characters; followed by -; followed by two numbers; followed by K.</p> <p>TS-FHB2-160W-, TS-FHB2-165W- or TS-FHB3-220W-; followed by up to two characters; followed by -; followed by two numbers; followed by K; may be followed by (MS).</p> <p>TS-FHB2-165W- or TS-FHB3-165W-; followed by up to two characters; followed by -MV; followed by -; followed by two numbers; followed by K.</p> <p>TS-FHB1-80W-, TS-FHB1-110W-, TS-FHB2-165W-, TS-FHB3-220W-, TS-FHB5-225W- or TS-FHB5-300W-; followed by up to two characters; followed by -HV; followed by -; followed by two numbers; followed by K.</p> <p>TS-FHB1-110W- followed by up to two characters; followed by -; followed by two numbers; followed by K; may be followed by (MS), (BT) or (PIR).</p> <p>TS-FHB1-80W-, TS-FHB1-110W-, TS-FHB2-160W-, TS-FHB3-220W-, TS-FHB5-225W- or TS-FHB5-300W-; followed by up to two characters; followed by -MV; followed by -; followed by two numbers; followed by K; may be followed by (MS), (BT) or (PIR).</p> <p>TS-LHB5- or TS-LHB6-; followed by 2FT080W, 2FT110W, 2FT160W, 2FT165W, 2FT220W, 4FT225W or 4FT300W; followed by -; followed by up to two characters; may be followed by -MV; followed by -; followed by two numbers; followed by K; may be followed by (MS).</p> <p>TS-LHB5- or TS-LHB6-; followed by 2FT110W, 2FT165W, 2FT225W, 4FT250W or 4FT300W; followed by -; followed by up to two characters; may be followed by -MV; followed by -; followed by TCP; may be followed by (MS).</p> <p>TS-LHB5- or TS-LHB6-; followed by 1.3FT080W, 1.3FT110W, 3FT225W or 3FT260W; followed by -; followed by up to two characters; may be followed by -MV; followed by -; followed by two numbers; followed by K; may be followed by (MS).</p> <p>TS-LHB5- or TS-LHB6-; followed by 1.3FT110W, 3FT225W or 3FT260W; followed by -; followed by up to two characters; may be followed by -MV; followed by -; followed by TCP; may be followed by (MS).</p> <p>TS-LHB5-4FT225W- followed by up to two characters; followed by -HV; followed by -; followed by two numbers; followed by K; may be followed by (MS).</p> <p>TS-LHB6-2FT225W- followed by up to two characters; followed by -; followed by two numbers; followed by K; may be followed by (MS).</p> <p>TS-LHB5- or TS-LHB6-; followed by 2FT165W, 2FT220W, 4FT225W or 4FT300W; followed by -; followed by up to two characters; followed by -; followed by two numbers; followed by K; followed by -; followed by TP; may be followed by (MS).</p> <p>TS-LHB5- or TS-LHB6-; followed by 2FT110W or 2FT165W; followed by -; followed by up to two characters; followed by -; followed by TC; may be followed by (MS).</p> <p>TS-LHB5- or TS-LHB6-; followed by 2FT225W; followed by -; followed by up to two characters; followed by -HV; followed by -; followed by two numbers; followed by K.</p>

**2.0 Product Description**

TS-LHB5- or TS-LHB6-; followed by 4FT225W or 4FT300W; followed by -; followed by up to two characters; followed by -; followed by TCP; may be followed by (MS).

TS-LHB5- or TS-LHB6-; followed by 2FT165W; followed by -; followed by up to two characters; followed by -HV; followed by -; followed by two numbers; followed by K; may be followed by (MS).

TS-LHB5- or TS-LHB6-; followed by 4FT300W; followed by -; followed by up to two characters; followed by -HV; followed by -; followed by TCP; may be followed by (MS).

TS-LHB5- or TS-LHB6-; followed by 2FT110W; followed by -; followed by up to two characters; followed by -; followed by TC; followed by (EMS) or (EM).

TS-LHB5- or TS-LHB6-; followed by 2FT165W, 2FT225W, 4FT225W or 4FT300W; followed by -; followed by up to two characters; followed by -; followed by TCP; followed by (EMS) or (EM).

**2.0 Product Description**

<b>Model Similarity</b>	<p>They are similar in electrical and mechanical construction, differences among them are size, LED quantity, LED driver and electrical rating.</p> <p>Model nomenclature:                  TS-FHBX-XXXW-X-XX-XXK(XX)                  where</p> <ol style="list-style-type: none"> <li>1. First suffix "X" can be 1, 2, 3 or 5 denote product version of the lamp.</li> <li>2. Suffix "XXX" can be three number denote input wattage, e.g. 080=80W.</li> <li>3. Second suffix "X" can be any number or H, L or HY(Y=number) denote lighting effect (No effects on power consumption).</li> <li>4. Suffix "XXK" may be MV or HV denote input voltage, blank = 120-277V, MV = 120-347V, HV = 347-480V</li> <li>5. Suffix "XX" can be 30K, 35K, 40K, 45K, 50K, 57K or 65K denote color temperature (CCT) of LED (e.g. 30K=3000K).</li> <li>6. Suffix "(XX)" may be (MS), (BT) or (PIR), (MS) = Motion Sensor, (BT) = Bluetooth Motion Sensor, (PIR) = PIR Motion sensor, blank = without sensor.</li> </ol>
	<p>Model nomenclature, for example:                  TS-LHBX-2FTXXXW-X-XX-XXK(XX), TS-LHBX-4FTXXXW-X-XX-XXK(XX)                  TS-LHBX-2FTXXXW-X-XX-TCP(XX), TS-LHBX-4FTXXXW-X-XX-TCP(XX)                  TS-LHBX-2FTXXXW-X-XX-TC(XX), TS-LHBX-4FTXXXW-X-XX-TC(XX)                  TS-LHBX-2FTXXXW-X-XX-TP(XX), TS-LHBX-4FTXXXW-X-XX-TP(XX)                  TS-LHBX-2FTXXXW-X-XX-XXK-TP(XX), TS-LHBX-4FTXXXW-X-XX-XXK-TP(XX)                  where</p> <ol style="list-style-type: none"> <li>1. First suffix "X" can be 5 or 6 denote product version of the lamp;                      (5: The lamp shape is fixed; 6: The lamp shade can be rotated, limited to 370 degrees.)</li> <li>2. Suffix "XXX" can be three number denote input wattage, e.g. 080=80W.</li> <li>3. Second suffix "X" can be any number or H, L or HY(Y=number) denote lighting effect (No effects on power consumption).</li> <li>4. Suffix "XX" may be MV or HV denote input voltage, blank = 120-277V, MV = 120-347V, HV = 277-480V.</li> <li>5a. Suffix "XXK" can be 30K, 35K, 40K, 45K, 50K, 57K, 65K (e.g. 30K=3000K)</li> <li>5b. Suffix "TCP", "TC" or "TC" denote adjustable color temperature (CCT) of LED and output function TCP=Adjustable output power and CCT switch; TC=Adjustable CCT switch, TP=Adjustable output power switch.</li> <li>6. Suffix "(XX)" may be (MS), (EM) or (EMS), (MS) = Motion Sensor, (EM) = provided with Emergency LED Driver, (EMS) = provided with emergency driver and motion sensor, blank = without sensor and emergency driver.</li> </ol>
	<p>Model nomenclature:                  TS-LHBX-1.3FTXXXW-X-XX-XXK(XX), TS-LHBX-3FTXXXW-X-XX-XXK(XX)                  where</p> <ol style="list-style-type: none"> <li>1. First suffix "X" can be 5 or 6 denote product version of the lamp.                      (5: The lamp shape is fixed; 6: The lamp shade can be rotated, limited to 370 degrees.)</li> <li>2. Suffix "XXX" can be three number denote input wattage, e.g. 080=80W.</li> <li>3. Second suffix "X" can be any number or H, L or HY(Y=number) denote lighting effect (No effects on power consumption).</li> <li>4. Suffix "XX" may be MV denote input voltage, blank = 120-277V, MV = 120-347V.</li> <li>5a. Suffix "XXK" can be 30K, 35K, 40K, 45K, 50K, 57K, 65K or TC denote color temperature (CCT) of LED (e.g. 30K=3000K).</li> <li>5b. Suffix "TCP" denote adjustable color temperature (CCT) of LED and output function, TCP=Adjustable output power and CCT switch.</li> <li>6. Suffix "(XX)" may be (MS), (MS) = Motion Sensor, blank = without sensor.</li> </ol>

2.0 Product Description				
Model No.	Number of LED	Dimension / mm (L x W x H)	LED Driver	Weight / kg
TS-FHB1-80W-X-XXX	180(45C4B)	660*360*330	FS-TMF017B0560TW	2.62
	224(14C16B)		WP-CHA-075U0421800	
	720(40C9B*2)		SS-120NL-130B	
TS-FHB1-110W-X-XXX(XX)	180(45C4B)	660*360*330	FS-TMF017B0800TW	2.67
	308(14C22B)		WP-CHA-100U0402400 or WP-CHS-098U	
	840(42C10B*2)		SS-120NL-130B or SS-120NH-130BH	
TS-FHB2-140W-X-XXX	180(45C4B)	655*360*520	FS-TMF017B0460TW	3.20
TS-FHB2-160W-X-XXX(XX)	180(45C4B)	655*360*520	FS-TMF017B0560TW	3.53
	1008(84C3B*4)		SS-150NL-260B or SS-150NL-260BH	
TS-FHB2-165W-X-XXX(XX)	180(45C4B)	655*360*520	FS-TMF017B0560TW	3.53
	182(14C13B)		WP-CHA-150U0423500	
	224(14C16B)		WP-CHA-150U0423600	
TS-FHB3-140W-X-XXX	180(45C4B)	655*360*520	FS-TMF017B0560TW	3.80
TS-FHB3-165W-X-XXX	180(45C4B)	655*360*520	FS-TMF017B0560TW	3.93
	196(14C14B)		WP-CHA-150U0423500	
TS-FHB3-220W-X-XXX(XX)	180(45C4B)	1215*187*400	FS-TMF017B0800TW	4.45
	168(42C4B)		FS-TMF017B0820TWH	
	196(14C14B)		WP-CHA-100U0402400	
	1512(42C6B*6)		SS-120NL-130B x 2	
TS-FHB5-165W-X-XXX	180(45C4B)	655*360*520	FS-TMF017B0560TW	5.76
TS-FHB5-225W-X-XXX	252(42C6B)	1215*187*520	FS-TMF017B0800TW	5.73
	308(14C22B)		WP-CHA-100U0402400	
	1512(42C9B*4)		SS-120NL-130B x 2	
TS-FHB5-300W-X-XXX	252(42C6B)	1215*187*520	FS-TMF017B0800TW	6.50
	308(14C22B)		WP-CHA-100U0402400	
	2520(84C5B*6)		SS-150NL-260B x 2	
TS-FHB1-80W-X-MV-XXX(XX)	180(45C4B)	660*360*330	FS-TMF017B0580TWH	2.87
	720(40C9B*2)		SS-120NH-M130BH	
TS-FHB1-110W-X-MV-XXX(XX)	180(45C4B)	660*360*330	FS-TMF017B0820TWH	2.85
	840(42C10B*2)		SS-120NH-M130BH	
TS-FHB2-160W-X-MV-XXX(XX)	180(45C4B)	655*360*520	FS-TMF017B0580TWH	3.28
	1008(84C3B*4)		SS-150NH-M260BH	
TS-FHB2-165W-X-MV-XXX	180(45C4B)	655*360*520	FS-TMF017B0580TWH	3.24
TS-FHB3-165W-X-MV-XXX	180(45C4B)	655*360*520	FS-TMF017B0580TWH	3.24
TS-FHB3-220W-X-MV-XXX(XX)	180(45C4B)	1215*187*400	FS-TMF017B0820TWH	4.58
	1512(42C6B*6)		SS-120NH-M130BH x 2	
TS-FHB5-225W-X-MV-XXX(XX)	252(42C6B)	1215*187*520	FS-TMF017B0820TWH	5.88
	1512(42C9B*4)		SS-120NH-M130BH x 2	
TS-FHB5-300W-X-MV-XXX(XX)	252(42C6B)	1215*187*520	FS-TMF017B0820TWH	6.20
	2520(84C5B*6)		SS-150NH-M260BH x 2	
TS-FHB1-80W-X-HV-XXX	224(14C16B)	660*360*330	VEL80130HVHDA-10V-1	2.97

2.0 Product Description					
TS-FHB1-110W-X-HV-XXK	308(14C22B)	660*360*330	VEL100240HVHDA-10V-1	3.00	
TS-FHB2-165W-X-HV-XXK	224(14C16B)	655*360*520	VEL80130HVHDA-10V-1	4.40	
TS-FHB3-220W-X-HV-XXK	196(14C14B)	1215*187*400	VEL100240HVHDA-10V-1	5.10	
TS-FHB5-225W-X-HV-XXK	308(14C22B)	1215*187*520	VEL100240HVHDA-10V-1	6.35	
TS-FHB5-300W-X-HV-XXK	308(14C22B)	1215*187*520	VEL100240HVHDA-10V-1	7.65	
TS-LHBX-2FT080W-X-XXK(XX)	400(40C5B*2)	LHB5:626*323*51 LHB6:654*325*51	SS-120NL-130B	3.09	
	450(45C5B*2)		SS-120NH-130BH		
			FS-TMF021B0620TC		
			FS-TMF017B0560TW		
420(42C5B*2)	FS-TMF019B0620TC-12V				
	FS-TMF019B0620TC				
TS-LHBX-2FT080W-X-MV-XXK(XX)	400(40C5B*2)	SS-120NH-M130BH	FS-TMF017B0580TWH		
	450(45C5B*2)				
TS-LHBX-1.3FT080W-X-XXK(XX)	400(40C5B*2)	LHB5:390*323*51	SS-120NL-130B	2.22	
		LHB6:418*325*51	SS-120NH-130BH		
	420(42C5B*2)	LHB5:390*323*51	FS-TMF021B0620TC		
		LHB6:418*325*51	FS-TMF019B0620TC-12V		
450(45C5B*2)	51	FS-TMF017B0560TW			
TS-LHBX-1.3FT080W-X-MV-XXK(XX)	400(40C5B*2)	LHB5:390*323*51	SS-120NH-M130BH	2.23	
	450(45C5B*2)	LHB6:418*325*51	FS-TMF017B0580TWH		
TS-LHBX-1.3FT110W-X-XXK(XX)	504(42C6B*2)	LHB5:390*323*51 LHB6:418*325*51	FS-TMF019B0850TC-12V	2.22	
			SS-120NL-130B		
			SS-120NH-130BH		
			FS-TMF019B0850TC		
FS-TMF017B0800TW					
TS-LHBX-1.3FT110W-X-MV-XXK(XX)	504(42C6B*2)	LHB5:390*323*51	FS-TMF017B0820TWH	2.25	
		LHB6:418*325*51	SS-120NH-M130BH		
TS-LHBX-1.3FT110W-X-TCP(XX)	1008(42C6B*2)* 2	LHB5:390*323*51	FS-TMF019B0850TC-12V	2.25	
		LHB6:418*325*51	FS-TMF019B0850TC		
TS-LHBX-1.3FT110W-X-MV-TCP(XX)	1008(42C6B*2)* 2	LHB5:390*323*51 LHB6:418*325*51	FS-TMF017B0820TWH	2.25	

2.0 Product Description					
	TS-LHBX-2FT110W-X-XXK(XX)	540(45C6B*2) or 504(42C6B*2)	LHB5:626*323*51mm LHB6:654*325*51mm	FS-TMF019B0850TC-12V	3.09
		504(42C6B*2)		SS-120NL-130B	
		504(42C6B*2) or 540(45C6B*2)		SS-120NH-130BH	
		504(42C6B*2)		FS-TMF017B0800TW	
		336(28C6B*2)		FS-TMF019B0850TC	
	TS-LHBX-2FT110W-X-MV-XXK(XX)	504(42C6B*2)		SS-100NL-E260B	
				SS-120NH-E260BH	
	TS-LHBX-2FT160W-X-XXK(XX)	792(44C9B*2) 756(42C9B*2) 756(42C9B*2) or 792(44C9B*2)	LHB5:626*323*51mm LHB6:654*325*51mm	SS-120NH-M130BH	
				FS-TMF017B0820TWH	
				FS-TMF019B1200TC-12V	
	TS-LHBX-2FT160W-X-MV-XXK(XX)	756(42C9B*2)		SS-150NL-260B	
				SS-150NH-260BH	
TS-LHBX-2FT165W-X-XXK(XX)	756(42C9B*2) or 504(42C6B*2) 792(44C9B*2) 756(42C9B*2) 756(42C9B*2) 792(44C9B*2)	LHB5:626*323*51mm LHB6:654*325*51mm	FS-TMF017B0560TW*2		
			FS-TMF019B1200TC		
			SS-150NH-M260BH		
			FS-TMF017B0580TWH*2		
			SS-150NL-260B		
	TS-LHBX-2FT165W-X-TC(XX)	1760(44C10B*2)*2 1680(84C5B*2)*2		FS-TMF019B1200TC-12V	
				SS-150NH-260BH	
				FS-TMF017B0560TW*2	
	TS-LHBX-2FT165W-X-MV-XXK(XX)	756(42C9B*2) 504(28C9B*2)		FS-TMF019B1200TC	
				SS-150NL-E260B	
	TS-LHBX-2FT165W-X-XXK(XX)	756(42C9B*2) or 504(42C6B*2) 792(44C9B*2) 756(42C9B*2) 756(42C9B*2) 792(44C9B*2) 504(28C9B)*2	LHB5:626*323*51mm LHB6:654*325*51mm	SS-160NH-E260BH	3.55
				LF-FAC150	
				LF-FAA150	
				FS-TMF019B1200TC	
				FS-TMF019B1200TC-12V	
				SS-160NH-E260BH	
				SS-150NH-M260BH	
				FS-TMF017B0580TWH*2	
				R1-T150B-260B	
				R1-T150B-260B12	
	TS-LHBX-2FT165W-X-TC(XX)	1760(44C10B*2)*2 1680(84C5B*2)*2		FS-TMF019B1200TC	
				FS-TMF019B1200TC-12V	
TS-LHBX-2FT165W-X-MV-XXK(XX)	756(42C9B*2) 504(28C9B*2)		SS-150NH-M260BH		
			FS-TMF017B0580TWH*2		

2.0 Product Description					
	TS-LHBX-2FT220W-X-XXX(XX)	1080(45C12B*2) or 1008(42C12B*2)	LHB5:626*323* 51mm LHB6:654*325* 51mm	FS-TMF019B0850TC-12V*2	3.55
		1008(42C12B*2)		SS-200NL-260B	
		1008(42C12B*2)		SS-200NH-260BH	
		1008(42C12B*2) or 1080(45C12B*2)		FS-TMF017B0800TW*2	
		1008(42C12B*2)		FS-TMF019B0850TC*2	
		1008(42C12B*2)		FS-TMF026B0850TW-12V	
		784(28C14B*2)		FS-TMF026B0850TW	
	TS-LHBX-2FT220W-X-MV-XXX(XX)	1008(42C12B*2)		SS-200NL-E260B	
				SS-200NH-E260BH	
				LF-FAC200	
				LF-FAA200	
				SS-200NH-M260BH	
				FS-TMF017B0820TWH*2	
	TS-LHBX-4FT225W-X-XXX(XX)	1008(42C12B*2)	LHB5:1166*32 3*51mm LHB6:1194*32 5*51mm	FS-TMF019B0850TC-12V*2	
1008(42C12B*2)				SS-120NL-130B*2	
1008(42C12B*2) or 1080(45C12B*2)				SS-120NH-130BH*2	
1008(42C12B*2)		FS-TMF017B0800TW*2			
		FS-TMF019B0850TC*2			
784(28C14B)*2		FS-TMF026B0850TW-12V			
		FS-TMF026B0850TW			
	SS-200NL-E260B				
	SS-200NH-E260BH				
	LF-FAC200				
	LF-FAA200				
	SS-120NH-M130BH*2				
TS-LHBX-4FT225W-X-MV-XXX(XX)	1008(42C12B*2)		FS-TMF017B0820TWH*2		
TS-LHBX-3FT225W-X-XXX(XX)	1008(42C12B*2)	LHB5:900*323* 51mm LHB6:928*325* 51mm	FS-TMF019B0850TC-12V*2	4.35	
			SS-120NL-130B*2		
	SS-120NH-130BH*2				
	FS-TMF017B0800TW*2				
	FS-TMF019B0850TC*2				
1008(42C12B*2) or 1008(84C6B*2)		FS-TMF026B0850TW-12V			
		FS-TMF026B0850TW			
TS-LHBX-3FT225W-X-MV-XXX(XX)	1008(42C12B*2)	LHB5:900*323* 51mm LHB6:928*325* 51mm	SS-120NH-M130BH*2	4.35	
			FS-TMF017B0820TWH*2		
			FT-200F-260B		
TS-LHBX-3FT225W-X-TCP(XX)	2016(84C6B*2)* 2	LHB5:900*323* 51mm LHB6:928*325* 51mm	SS-200NL-260B	4.35	
			SS-200NH-260BH		
			FS-TMF026B0850TW-12V		
			FS-TMF026B0850TW		

2.0 Product Description					
	TS-LHBX-3FT225W-X-MV-TCP(XX)	2016(84C6B*2)* 2	LHB5:900*323* 51mm LHB6:928*325* 51mm	SS-200NH-M260BH	4.35
				FT-200F-260B	
	TS-LHBX-3FT260W-X-XXK(XX)	1344(42C16B*2)	LHB5:900*323* 51mm LHB6:928*325* 51mm	FS-TMF019B1000TC*2	4.35
				FT-240C-260B	
	TS-LHBX-3FT260W-X-MV-XXK(XX)	1344(42C16B*2)	LHB5:900*323* 51mm LHB6:928*325* 51mm	FT-240F-260B	4.35
	TS-LHBX-3FT260W-X-TCP(XX)	3024(84C9B*2)* 2	LHB5:900*323* 51mm LHB6:928*325* 51mm	SS-240NL-260B	4.35
				SS-240NH-260BH	
				FT-240C-260B	
	TS-LHBX-3FT260W-X-MV-TCP(XX)	3024(84C9B*2)* 2	LHB5:900*323* 51mm LHB6:928*325* 51mm	SS-240NH-M260BH	4.35
				FT-240F-260B	
	TS-LHBX-4FT300W-X-XXK(XX)	1512(84C9B*2) or 1512(84C9B*2) or 1512(42C18B*2) or 896(28C16B)*2 or 1584(44C18B*2) or 1512(42C18B*2) or 896(28C16B)*2 or 1512(42C18B*2) or 896(28C16B)*2 or 896(28C16B)*2	LHB5:1166*32 3*51mm LHB6:1194*32 5*51mm	SS-150NL-260B*2	6.32
				SS-150NH-260BH*2	
FS-TMF017B0800TW*3					
FS-TMF019B1200TC*2					
FS-TMF019B1200TC-12V*2					
LF-FAC320					
LF-FAA320					
SS-320NH-E260BH					
SS-150NH-M260BH*2					
FS-TMF017B0820TWH*3					
TS-LHBX-4FT300W-X-MV-XXK(XX)	1512(42C18B*2)				

2.0 Product Description						
	TS-LHBX-2FT110W-X-TC(XX)	448(28C6B2B)*2	LHB5:626*323*51mm LHB6:654*325*51mm	SS-100NL-E260B + Emergency driver: BLD-HM25D-YYY	3.02	
		540(45C6B*2)		SS-120NH-E260BH + Emergency driver: BLD-HM25D-YYY		
		504(42C6B*2)		FS-TMF019B0850TC-12V		
	FS-TMF017B0800TW					
	FS-TMF019B0850TC					
	TS-LHBX-2FT110W-X-TCP(XX)			FS-TMF017B0820TWH		
	TS-LHBX-2FT165W-X-TCP(XX)	840(84C5B*2)	LHB5:626*323*51mm LHB6:654*325*51mm	SS-150NL-260B	3.02	
		1680(84C5B*2)*2		SS-150NH-260BH		
		880(44C10B*2)		SS-160NH-E260BH		
		1008 (28C9B*2)*2 or 672 (28C9B3B)*2		FS-TMF019B1200TC-12V		
				FS-TMF019B1200TC		
		1008(28C9B*2)*2		SS-150NL-E260B + Emergency driver: BLD-HM25D-YYY		
	TS-LHBX-2FT165W-X-MV-TCP(XX)	840(84C5B*2)	LHB5:626*323*51mm LHB6:654*325*51mm	SS-160NH-E260BH + Emergency driver: BLD-HM25D-YYY		3.02
		1008 (28C9B*2)*2		LF-FAC150		
				LF-FAA150		
840(84C5B*2)		SS-150NH-M260BH				
		R1-T150B-260B				
		R1-T150B-260B12				
	SS-160NM-A260B					
1008 (28C9B*2)*2			SS-160NM-A260BH			

2.0 Product Description					
TS-LHBX-2FT225W-X-TCP(XX)	1008(84C6B*2)	LHB5:626*323*51mm LHB6:654*325*51mm	SS-200NL-260B	3.19	
			SS-200NH-260BH		
			FS-TMF026B0850TW-12V		
	FS-TMF026B0850TW				
	SS-200NL-E260B				
	SS-200NH-E260BH + Emergency driver: BLD-HM25D-YYY				
	LF-FAC200				
	LF-FAA200				
	1568(28C14B*2) *2 or 1120 (28C15B5B)*2				
			1568(28C14B*2) *2		
TS-LHBX-2FT225W-X-MV-TCP(XX)	1008(84C6B*2)	SS-200NH-M260BH			
	1568(28C14B*2) *2	SS-200NM-A260BH			
		SS-200NM-A260B			
TS-LHBX-4FT250W-X-TCP(XX)	1512(84C9B*2)	LHB5:1166*323*51mm LHB6:1194*325*51mm	SS-240NL-260B	3.24	
			SS-240NH-260BH		
SS-240NH-M260BH					
R1-T240B-260B					
TS-LHBX-4FT250W-X-MV-TCP(XX)					
TS-LHB5-4FT225W-X-HV-XXK(XX)	1080(15C36B*2)	LHB5:1166*323*51mm	FD-100V-054B*2	4.88	
TS-LHB6-2FT225W-X-XXK(XX)	1008(42C12B*2)	LHB6:654*325*51mm	FS-TMF026B0850TW-12V	5.13	
			FS-TMF026B0850TW		
TS-LHBX-2FT220W-X-XXK-TP(XX)	784(28C14B)*2	LHB5:626*323*51mm LHB6:654*325*51mm	FS-TMF026B0850TW	3.13	
			FS-TMF026B0850TW-12V		
			SS-200NL-E260B		
			SS-200NH-E260BH		
			LF-FAC200		
LF-FAA200					
TS-LHBX-4FT300W-X-XXK-TP(XX)	896(28C16B)*2	LHB5:1166*323*51mm LHB6:1194*325*51mm	LF-FAC320	3.21	
			LF-FAA320	3.21	
			SS-320NH-E260BH	3.21	
TS-LHBX-2FT225W-X-HV-XXK	1080(15C36B)*2	LHB5:626*323*51mm LHB6:654*325*51mm	FD-100V-054B*2	3.56	
TS-LHBX-2FT165W-X-HV-XXK(XX)	504(28C9B)*2	LHB5:626*323*51mm LHB6:654*325*51mm	R1-V150B-260B12	2.49	
			R1-V150B-260B		
			N6H-150M260A12H		

2.0 Product Description						
	TS-LHBX-2FT165W-X-XXK-TP(XX)	504(28C9B)*2	LHB5:626*323* 51mm LHB6:654*325* 51mm	SS-150NL-E260B	2.67	
				SS-160NH-E260BH		
				LF-FAC150		
				LF-FAA150		
	TS-LHBX-4FT225W-X-XXK-TP(XX)	784(28C14B)*2			SS-200NL-E260B	3.95
					SS-200NH-E260BH	
					LF-FAC200 LF-FAA200	
	TS-LHBX-4FT225W-X-TCP(XX)	1568(28C14B*2)*2			SS-200NL-E260B	4.1
					SS-200NH-E260BH + Emergency driver: BLD-HM25D-YYY	
					LF-FAC200 LF-FAA200	
	TS-LHBX-4FT300W-X-TCP(XX)	1792(28C16B*2)*2 or 1176 (28C16B5B)*2		LHB5:1166*32 3*51mm LHB6:1194*32 5*51mm	SS-320NH-E260BH + Emergency driver: BLD-HM25D-YYY	4.45
		1792(28C16B*2)*2			LF-FAC320 LF-FAA320	
	TS-LHBX-4FT300W-X-MV-TCP(XX)	1792(28C16B*2)*2			SS-320NM-A260BH	
					SS-320NM-A260B	
	TS-LHBX-4FT300W-X-HV-TCP(XX)	1176 (28C16B5B)*2			R1-V320B-260B12	
					R1-V320B-260B	

2.0 Product Description						
Ratings	input: 120-277Vac, 50/60Hz					
	Model No.	Current (A)	Wattage(W)	LED Driver	Ta (°C)	
TS-FHB1-80W-X-XXK		0.73	80	FS-TMF017B0560TW	45	
				WP-CHA-075U0421800		
				SS-120NL-130B		
TS-FHB1-110W-X-XXK(XX)		1.00	110	FS-TMF017B0800TW	45	
				WP-CHA-100U0402400 or		
				WP-CHS-098U		
				SS-120NL-130B or SS-120NH-130BH		
TS-FHB2-140W-X-XXK		1.28	140	FS-TMF017B0460TW	45	
TS-FHB2-160W-X-XXK(XX)		1.47	160	FS-TMF017B0560TW	45	
				SS-150NL-260B or SS-150NL-260BH		
TS-FHB2-165W-X-XXK(XX)		1.51	165	FS-TMF017B0560TW	45	
				WP-CHA-150U0423500		
				WP-CHA-150U0423600		
TS-FHB3-140W-X-XXK		1.28	140	FS-TMF017B0560TW	45	
TS-FHB3-165W-X-XXK		1.51	165	FS-TMF017B0560TW	45	
				WP-CHA-150U0423500		
TS-FHB3-220W-X-XXK(XX)		2.02	220	FS-TMF017B0800TW	45	
				FS-TMF017B0820TWH		
				WP-CHA-100U0402400		
				SS-120NL-130B x 2		
TS-FHB5-165W-X-XXK		1.51	165	FS-TMF017B0560TW	45	
TS-FHB5-225W-X-XXK		2.06	225	FS-TMF017B0800TW	45	
				WP-CHA-100U0402400		
				SS-120NL-130B x 2		
TS-FHB5-300W-X-XXK		3.20	320	FS-TMF017B0800TW	45	
				WP-CHA-100U0402400		
				SS-150NL-260B x 2		
TS-LHBX-2FT080W-X-XXK(XX)		0.73	80	SS-120NL-130B	45	
				SS-120NH-130BH		
				FS-TMF021B0620TC		
				FS-TMF017B0560TW		
				FS-TMF019B0620TC-12V		
TS-LHBX-1.3FT080W-X-XXK(XX)		0.73	80	SS-120NL-130B	40	
				SS-120NH-130BH		
				FS-TMF021B0620TC		
				FS-TMF017B0560TW		
				FS-TMF019B0620TC-12V		
TS-LHBX-1.3FT110W-X-XXK(XX)		1.00	110	FS-TMF019B0850TC-12V	40	
				SS-120NL-130B		
				SS-120NH-130BH		
				FS-TMF019B0850TC		
				FS-TMF017B0800TW		
TS-LHBX-1.3FT110W-X-TCP(XX)		1.00	110/95/80	FS-TMF019B0850TC-12V	40	
				FS-TMF017B0800TW		
				FS-TMF019B0850TC		
TS-LHBX-2FT110W-X-XXK(XX)		1.00	110	SS-120NL-130B	45	
				SS-120NH-130BH		
				FS-TMF017B0800TW		
				FS-TMF019B0850TC		
				FS-TMF019B0850TC-12V		
				SS-100NL-E260B		50
				SS-120NH-E260BH		

2.0 Product Description					
	TS-LHBX-2FT160W-X-XXK(XX)	1.47	160	SS-150NL-260B	45
				SS-150NH-260BH	
				FS-TMF017B0560TW*2	
				FS-TMF019B1200TC	
				FS-TMF019B1200TC-12V	
	TS-LHBX-2FT165W-X-XXK(XX)	1.51	165	SS-150NL-260B	45
				SS-150NH-260BH	
				FS-TMF017B0560TW*2	
				FS-TMF019B1200TC	
				FS-TMF019B1200TC-12V	50
				SS-150NL-E260B	
				SS-160NH-E260BH	
	LF-FAC150	45			
	LF-FAA150				
	TS-LHBX-2FT165W-X-TC(XX)	1.51	165	FS-TMF019B1200TC	45
				FS-TMF019B1200TC-12V	
				SS-160NH-E260BH	50
	TS-LHBX-2FT220W-X-XXK(XX)	2.02	220	SS-200NL-260B	40
				SS-200NH-260BH	
				FS-TMF017B0800TW*2	
				FS-TMF019B0850TC*2	
				FS-TMF019B0850TC-12V*2	
				FS-TMF026B0850TW	
				FS-TMF026B0850TW-12V	50
				SS-200NL-E260B	
				SS-200NH-E260BH	
				LF-FAC200	
	LF-FAA200				
TS-LHBX-4FT225W-X-XXK(XX)	2.06	225	SS-120NL-130B*2	40	
			SS-120NH-130BH*2		
			FS-TMF017B0800TW*2		
			FS-TMF019B0820TC*2		
			FS-TMF019B0850TC-12V		
			FS-TMF026B0850TW-12V		
			FS-TMF026B0850TW	50	
			SS-200NL-E260B		
			SS-200NH-E260BH		
LF-FAC200	45				
LF-FAA200					
TS-LHBX-4FT300W-X-XXK(XX)	3.20	300	SS-150NL-260B*2	40	
			SS-150NH-260BH*2		
			FS-TMF017B0800TW*3		
			FS-TMF019B1130TC*2		
			FS-TMF019B1200TC-12V*2		
			LF-FAC320	50	
			LF-FAA320		
SS-320NH-E260BH					
TS-LHBX-2FT110W-X-TC(XX)	1.00	110	SS-100NL-E260B + Emergency driver: BLD-HM25D-YYY	50	
			SS-120NH-E260BH + Emergency driver: BLD-HM25D-YYY		
TS-LHBX-2FT110W-X-TCP(XX)	1.00	110	FS-TMF017B0800TW	45	
			FS-TMF019B0820TC		
			FS-TMF019B0850TC-12V		

2.0 Product Description				
TS-LHBX-3FT225W-X-XXK(XX)	2.06	225	FS-TMF019B0850TC-12V*2	40
			SS-120NL-130B*2	
			SS-120NH-130BH*2	
			FS-TMF017B0800TW*2	
			FS-TMF019B0850TC*2	
			FS-TMF026B0850TW-12V	
			FS-TMF026B0850TW	
TS-LHBX-3FT225W-X-TCP(XX)	2.06	225/165/120	SS-200NL-260B	40
			SS-200NH-260BH	
			FS-TMF026B0850TW-12V	
			FS-TMF026B0850TW	
TS-LHBX-3FT260W-X-XXK(XX)	2.38	260	FS-TMF019B1000TC*2	40
			FT-240C-260B	
TS-LHBX-3FT260W-X-TCP(XX)	2.38	250/225/200	SS-240NL-260B	40
			SS-240NH-260BH	
			FT-240C-260B	
TS-LHBX-2FT165W-X-TCP(XX)	1.51	165	SS-150NL-260B	40
			SS-150NH-260BH	
			FS-TMF019B1200TC-12V	
			FS-TMF019B1200TC	50
			SS-160NH-E260BH	
			SS-150NL-E260B + Emergency driver: BLD-HM25D-YYY	
			SS-160NH-E260BH + Emergency driver: BLD-HM25D-YYY	
LF-FAC150	45			
LF-FAA150				
TS-LHBX-2FT225W-X-TCP(XX)	2.06	225	SS-200NL-260B	40
			SS-200NH-260BH	
			FS-TMF026B0850TW-12V	
			FS-TMF026B0850TW	50
			SS-200NL-E260B	
			SS-200NH-E260BH + Emergency driver: BLD-HM25D-YYY	
			LF-FAC200	
LF-FAA200	45			
TS-LHBX-4FT250W-X-TCP(XX)	2.50	250	SS-240NL-260B	40
			SS-240NH-260BH	
TS-LHB6-2FT225W-X-XXK(XX)	2.06	225	FS-TMF026B0850TW-12V	40
			FS-TMF026B0850TW	
TS-LHBX-2FT220W-X-XXK-TP(XX)	2.02	220	FS-TMF026B0850TW	40
			FS-TMF026B0850TW-12V	50
			SS-200NL-E260B	
			SS-200NH-E260BH	
			LF-FAC200	45
LF-FAA200				
TS-LHBX-4FT300W-X-XXK-TP(XX)	3.20	300	LF-FAC320	40
			LF-FAA320	
			SS-320NH-E260BH	50
TS-LHBX-2FT165W-X-XXK-TP(XX)	1.51	165	SS-150NL-E260B	50
			SS-160NH-E260BH	
			LF-FAC150	45
			LF-FAA150	

2.0 Product Description				
TS-LHBX-4FT225W-X-XXK-TP(XX)	2.06	225	SS-200NL-E260B	50
			SS-200NH-E260BH	
			LF-FAC200	45
			LF-FAA200	
TS-LHBX-4FT225W-X-TCP(XX)	2.06	225	SS-200NL-E260B	50
			SS-200NH-E260BH	
			Emergency driver: BLD-HM25D-YYY	45
			LF-FAC200	
			LF-FAA200	
TS-LHBX-4FT300W-X-TCP(XX)	3.2	300	SS-320NH-E260BH + Emergency driver: BLD-HM25D-YYY	50
			LF-FAC320	
			LF-FAA320	45
input: 120-347Vac, 50/60Hz				
Model No.	Current (A)	Wattage(W)	LED Driver	Ta (°C)
TS-FHB1-80W-X-MV-XXK(XX)	0.73	80	FS-TMF017B0580TWH	45
			SS-120NH-M130BH	
TS-FHB1-110W-X-MV-XXK(XX)	1.00	110	FS-TMF017B0820TWH	45
			SS-120NH-M130BH	
TS-FHB2-160W-X-MV-XXK(XX)	1.47	160	FS-TMF017B0580TWH*2	45
			SS-150NH-M260BH	
TS-FHB2-165W-X-MV-XXK	1.51	165	FS-TMF017B0580TWH*2	45
TS-FHB3-165W-X-MV-XXK	1.51	165	FS-TMF017B0580TWH*2	45
TS-FHB3-220W-X-MV-XXK(XX)	2.02	220	FS-TMF017B0820TWH*2	45
			SS-120NH-M130BH*2	
TS-FHB5-225W-X-MV-XXK(XX)	2.06	225	FS-TMF017B0820TWH*2	45
			SS-120NH-M130BH*2	
TS-FHB5-300W-X-MV-XXK(XX)	3.20	320	FS-TMF017B0820TWH*3	45
			SS-150NH-M260BH*2	
TS-LHBX-2FT080W-X-MV-XXK(XX)	0.73	80	SS-120NH-M130BH	45
			FS-TMF017B0580TWH	
TS-LHBX-2FT110W-X-MV-XXK(XX)	1.00	110	SS-120NH-M130BH	45
			FS-TMF017B0820TWH	
TS-LHBX-2FT160W-X-MV-XXK(XX)	1.47	160	SS-150NH-M260BH	45
			FS-TMF017B0580TWH*2	
TS-LHBX-2FT165W-X-MV-XXK(XX)	1.51	165	SS-150NH-M260BH	45
			FS-TMF017B0580TWH*2	
			R1-T150B-260B	50
			R1-T150B-260B12	
TS-LHBX-2FT220W-X-MV-XXK(XX)	2.02	220	SS-200NH-M260BH	45
			FS-TMF017B0820TWH*2	
TS-LHBX-4FT225W-X-MV-XXK(XX)	2.06	225	SS-120NH-M130BH*2	45
			FS-TMF017B0820TWH*2	
TS-LHBX-4FT300W-X-MV-XXK(XX)	3.20	300	SS-150NH-M260BH*2	45
			FS-TMF017B0820TWH*3	

2.0 Product Description					
TS-LHB6-2FT110W-X-MV-TCP(XX)	1.00	110	FS-TMF017B0820TWH	45	
TS-LHBX-2FT165W-X-MV-TCP(XX)	1.51	165	SS-150NH-M260BH	45	
			R1-T150B-260B		
			R1-T150B-260B12	50	
			SS-160NM-A260B		
SS-160NM-A260BH					
TS-LHBX-2FT225W-X-MV-TCP(XX)	2.06	225	SS-200NH-M260BH	45	
			SS-200NM-A260BH	50	
			SS-200NM-A260B	50	
TS-LHB6-4FT250W-X-MV-TCP(XX)	3.20	250	SS-240NH-M260BH	45	
R1-T240B-260B					
TS-LHBX-1.3FT080W-X-MV-XXK(XX)	0.73	80	SS-120NH-M130BH	40	
			FS-TMF017B0580TWH		
TS-LHBX-1.3FT110W-X-MV-XXK(XX)	1.00	110	FS-TMF017B0820TWH	40	
			SS-120NH-M130BH		
TS-LHBX-1.3FT110W-X-MV-TCP(XX)	1.00	110/95/80	FS-TMF017B0820TWH	40	
TS-LHBX-3FT225W-X-MV-XXK(XX)	2.06	225	SS-120NH-M130BH*2	40	
			FS-TMF017B0820TWH*2		
			FT-200F-260B		
TS-LHBX-3FT225W-X-MV-TCP(XX)	2.38	225/165/120	SS-200NH-M260BH	40	
			FT-200F-260B		
TS-LHBX-3FT260W-X-MV-XXK(XX)	2.38	260	FT-240F-260B	40	
TS-LHBX-3FT260W-X-MV-TCP(XX)	2.38	250/225/200	SS-240NH-M260BH	40	
			FT-240F-260B		
TS-LHBX-4FT300W-X-MV-TCP(XX)	2.75	300	SS-320NM-A260BH	50	
			SS-320NM-A260B	50	

2.0 Product Description				
Input: 277-480Vac, 50/60Hz				
Model No.	Current (A)	Wattage(W)	LED Driver	Ta (°C)
TS-LHBX-2FT165W-X-HV-XXK(XX)	0.66	165	R1-V150B-260B12	50
			R1-V150B-260B	
			N6H-150M260A12H	
TS-LHB5-4FT225W-X-HV-XXK(XX)	0.80	225	FD-100V-054B*2	40
TS-LHBX-2FT225W-X-HV-XXK	0.89	225	FD-100V-054B*2	45
TS-LHBX-4FT300W-X-HV-TCP(XX)	1.19	300	R1-V320B-260B	50
			R1-V320B-260B12	
Input: 347-480Vac, 50/60Hz				
Model No.	Current (A)	Wattage(W)	LED Driver	Ta (°C)
TS-FHB1-80W-X-HV-XXK	0.25	810	VEL80130HVHDA-10V-1	45
TS-FHB1-110W-X-HV-XXK	0.35	110	VEL100240HVHDA-10V-1	45
TS-FHB2-165W-X-HV-XXK	0.52	165	VEL80130HVHDA-10V-1	45
TS-FHB3-220W-X-HV-XXK	0.70	220	VEL100240HVHDA-10V-1	45
TS-FHB5-225W-X-HV-XXK	0.71	225	VEL100240HVHDA-10V-1	45
TS-FHB5-300W-X-HV-XXK	0.95	300	VEL100240HVHDA-10V-1	45
Other Ratings	Ta: refer to above table.			

### 3.0 Product Photographs

**Photo Group 1** - Main Product Photos, refer to UL Report E468007 , Vol. 1, Sec. 17 pictures 1~38.

**Photo 2** - External view of models TS-LHB5-2FTXXXW-X-XX-XXK(XX), TS-LHB5-2FTXXXW-X-XX-TCP(XX), also represents TS-LHB5-1.3FTXXXW-X-XX-XXK(XX), TS-LHB5-1.3FTXXXW-X-XX-TCP(XX)



**Photo 2a** - External view of models TS-LHB5-4FTXXXW-X-XX-XXK(XX), TS-LHB5-4FTXXXW-X-XX-TCP(XX), also represents TS-LHB5-3FTXXXW-X-XX-XXK(XX), TS-LHB5-3FTXXXW-X-XX-TCP(XX)



**3.0 Product Photographs**

**Photo 3** - External view of models TS-LHB6-2FTXXXW-X-XX-XXK(XX), TS-LHB6-2FTXXXW-X-XX-TCP(XX), also represents TS-LHB6-1.3FTXXXW-X-XX-XXK(XX), TS-LHB6-1.3FTXXXW-X-XX-TCP(XX)



**Photo 3a** - External view of models TS-LHB6-4FTXXXW-X-XX-XXK(XX), TS-LHB6-4FTXXXW-X-XX-TCP(XX), also represents TS-LHB6-3FTXXXW-X-XX-XXK(XX), TS-LHB6-3FTXXXW-X-XX-TCP(XX)

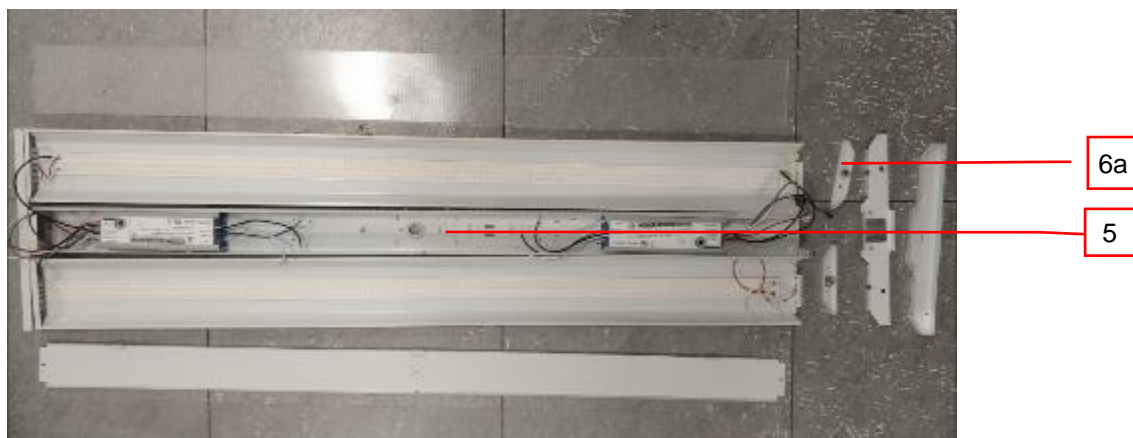


### 3.0 Product Photographs

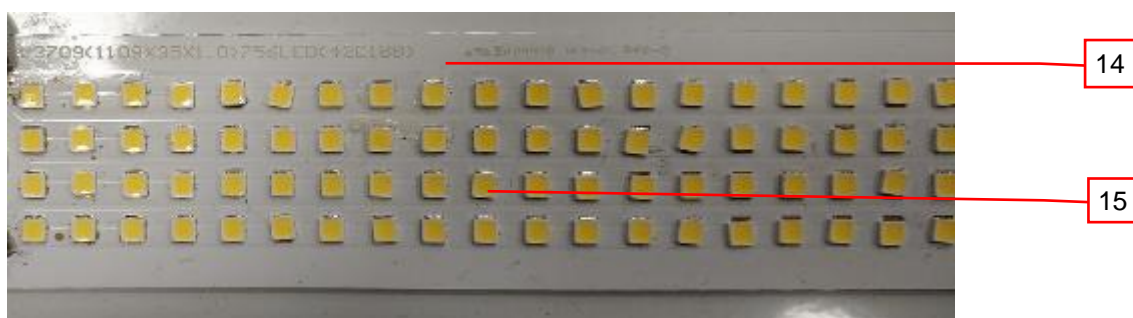
**Photo 4** - Internal view of models TS-LHB5-4FTXXXW-X-XX-XXK(XX), also represent models TS-LHB5-2FTXXXW-X-XX-XXK(XX), TS-LHB5-1.3FTXXXW-X-XX-XXK(XX), TS-LHB5-3FTXXXW-X-XX-XXK(XX)



**Photo 5** - Internal view of models TS-LHB6-4FTXXXW-X-XX-XXK(XX), also represent models TS-LHB6-2FTXXXW-X-XX-XXK(XX), TS-LHB6-1.3FTXXXW-X-XX-XXK(XX), TS-LHB6-3FTXXXW-X-XX-XXK(XX)



**Photo 6** - LED PCB of models TS-LHB6-4FTXXXW-X-XX-XXK(XX), also represent models TS-LHB5-4FTXXXW-X-XX-XXK(XX), TS-LHB5-2FTXXXW-X-XX-XXK(XX), TS-LHB6-2FTXXXW-X-XX-XXK(XX)



**3.0 Product Photographs**

**Photo 6a** - LED PCB of models TS-LHB5-1.3FTXXXW-X-XX-XXK(XX) and TS-LHB6-1.3FTXXXW-X-XX-



**Photo 6b** - LED PCB of models TS-LHB5-3FTXXXW-X-XX-XXK(XX) and TS-LHB6-3FTXXXW-X-XX-XXK(XX)

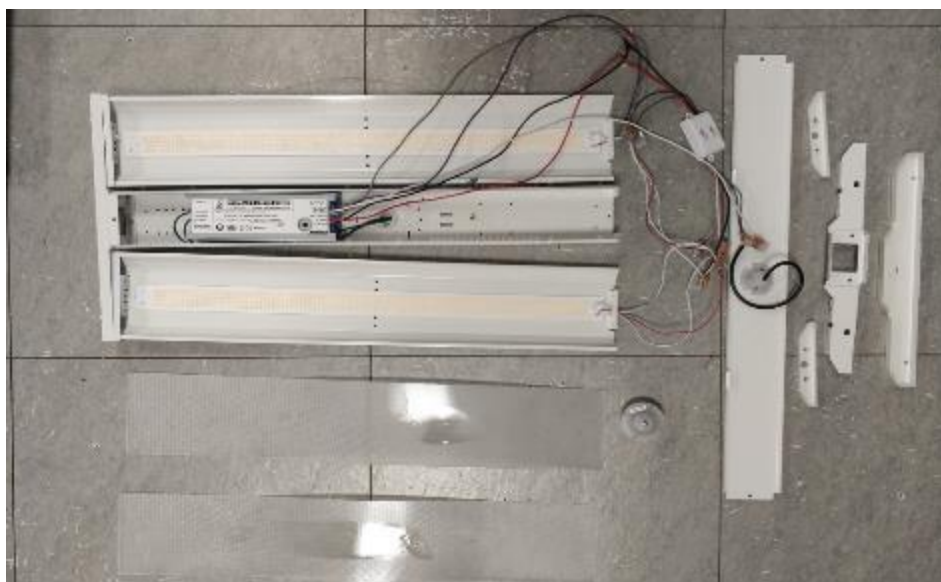


### 3.0 Product Photographs

**Photo 7** - External view of models TS-LHB6-2FTXXXW-X-XX-TCP(MS), also represent models TS-LHB6-4FTXXXW-X-XX-TCP(MS), TS-LHB6-2FTXXXW-X-XX-XXK(MS), TS-LHB6-4FTXXXW-X-XX-XXK(XX), TS-LHB6-1.3FTXXXW-X-XX-TCP(MS), TS-LHB6-3FTXXXW-X-XX-TCP(MS)

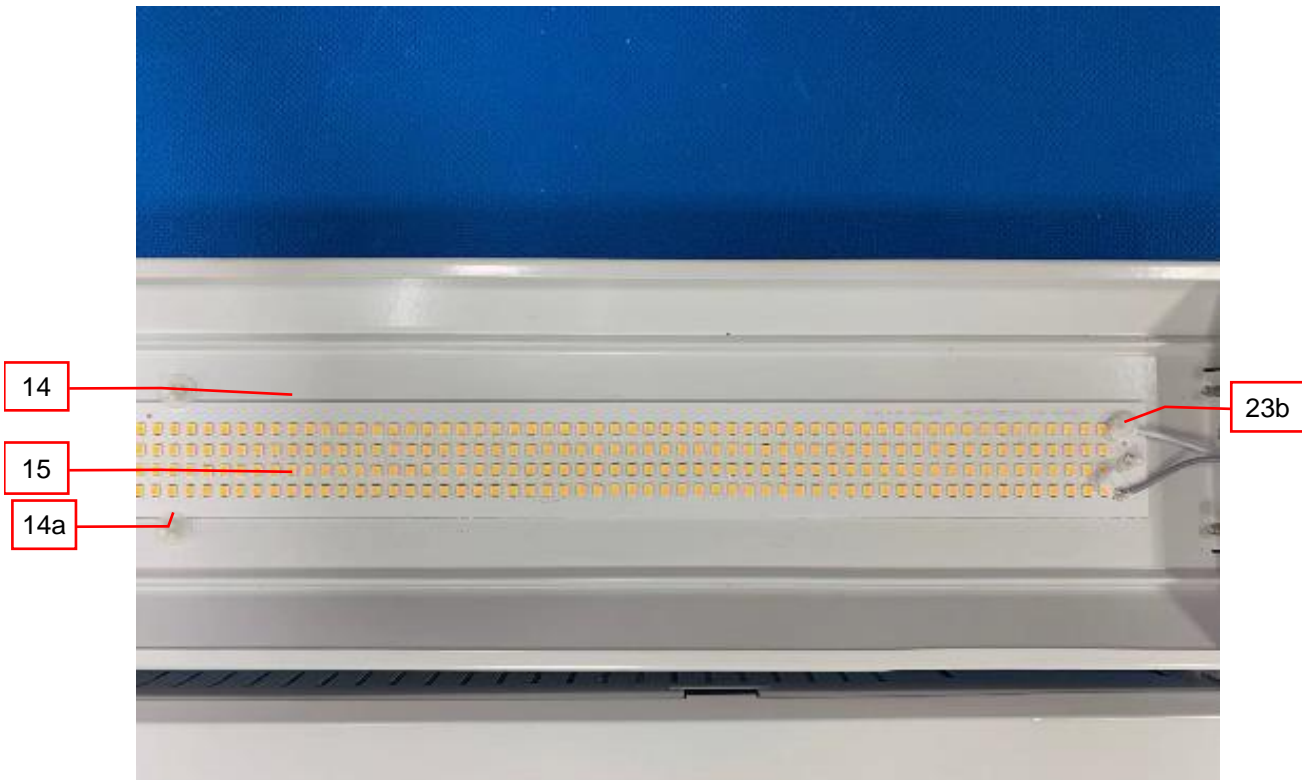


**Photo 8** - Internal view of models TS-LHB6-2FTXXXW-X-XX-TCP(MS), also represent models TS-LHB6-4FTXXXW-X-XX-TCP(MS), TS-LHB6-1.3FTXXXW-X-XX-TCP(MS), TS-LHB6-3FTXXXW-X-XX-TCP(MS)



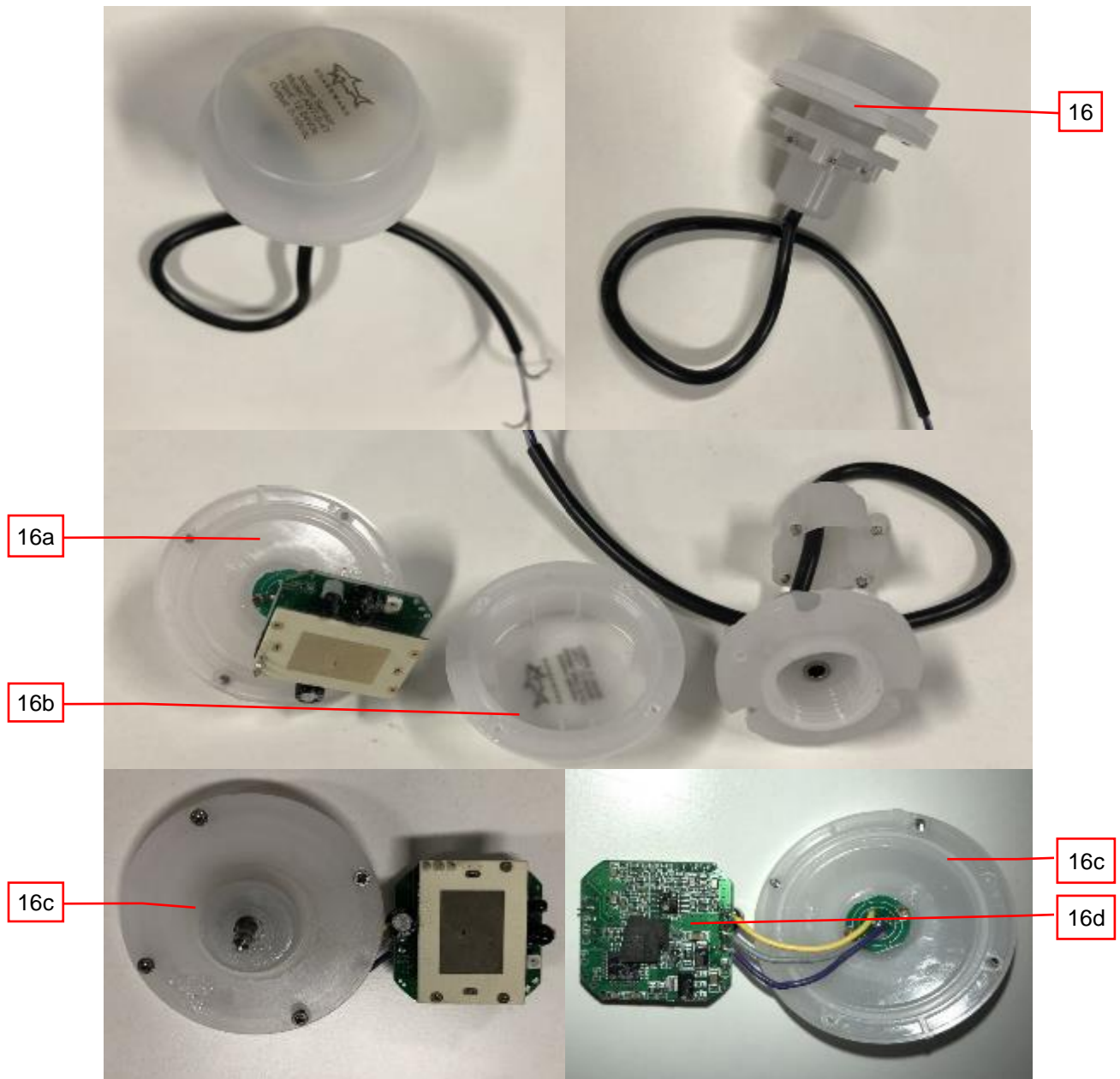
### 3.0 Product Photographs

**Photo 9** - LED PCB of models TS-LHB6-4FTXXXW-X-XX-TCP(XX), also represent models TS-LHB6-2FTXXXW-X-XX-TCP(XX), TS-LHB6-1.3FTXXXW-X-XX-TCP(XX), TS-LHB6-3FTXXXW-X-XX-TCP(XX)



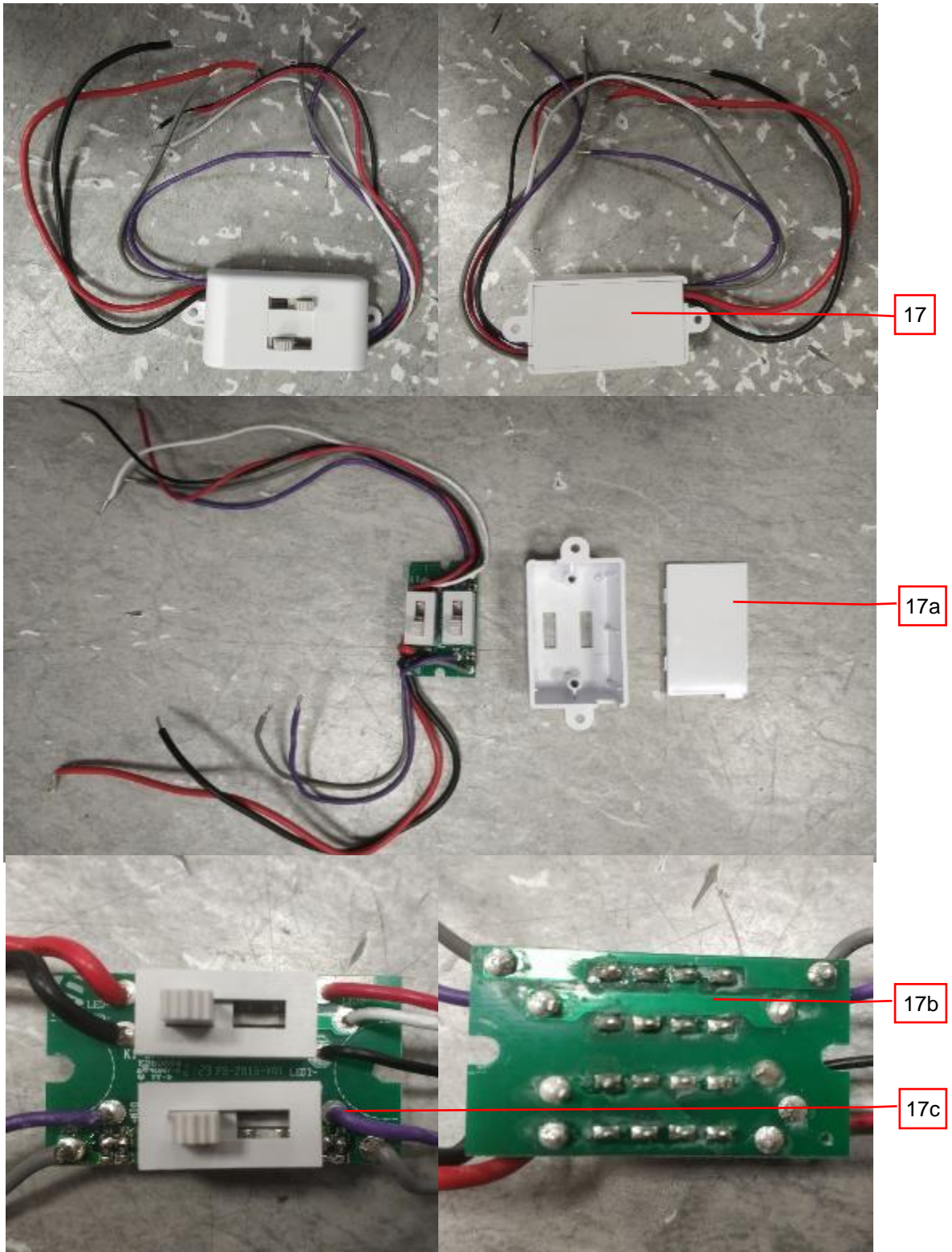
**3.0 Product Photographs**

**Photo 10 - Motion Sensor for models with suffix (MS).**



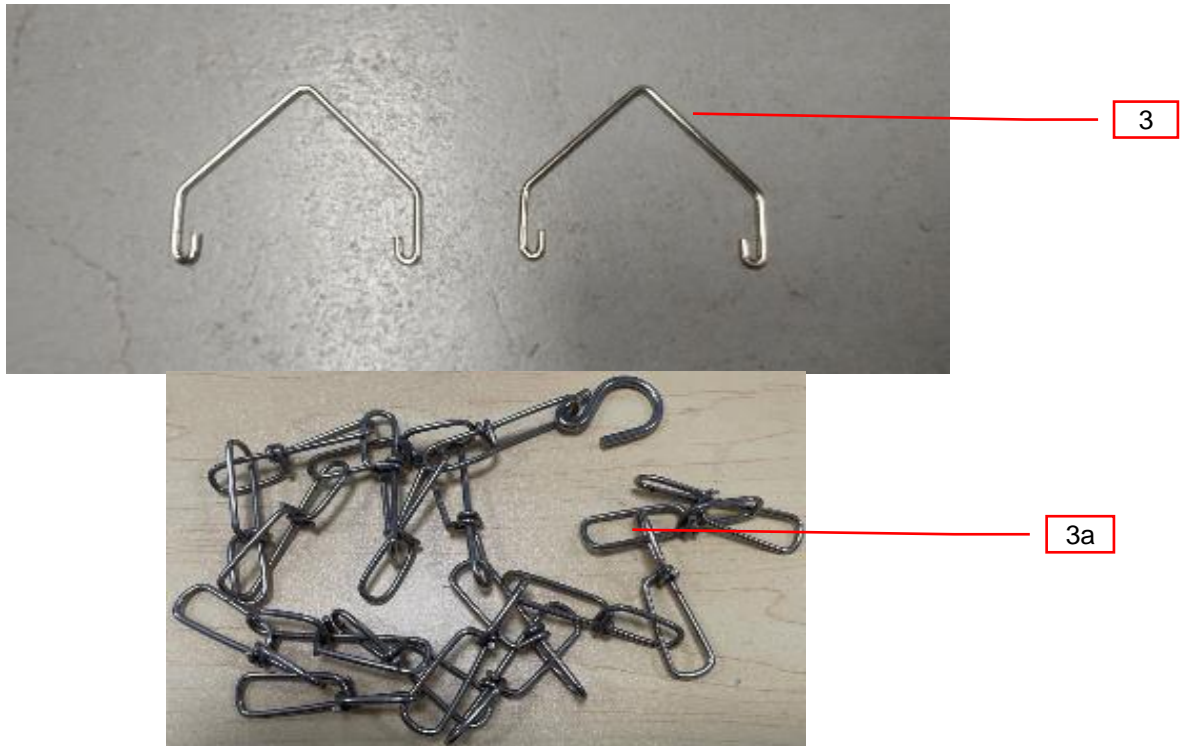
**3.0 Product Photographs**

**Photo 11** - Controller Box for models with suffix TCP.

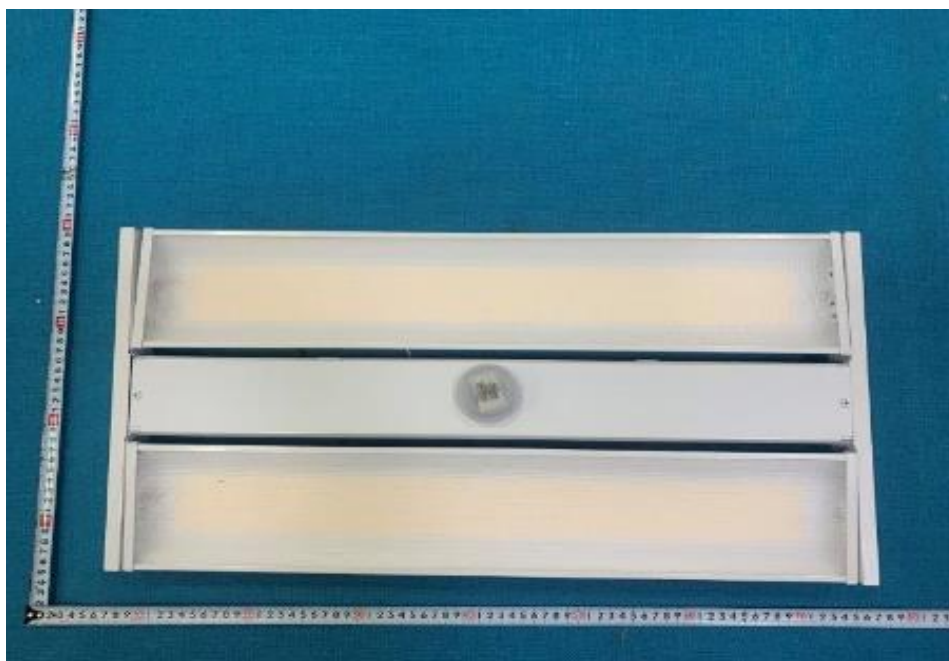


### 3.0 Product Photographs

**Photo 12 - Mounting Brackets**

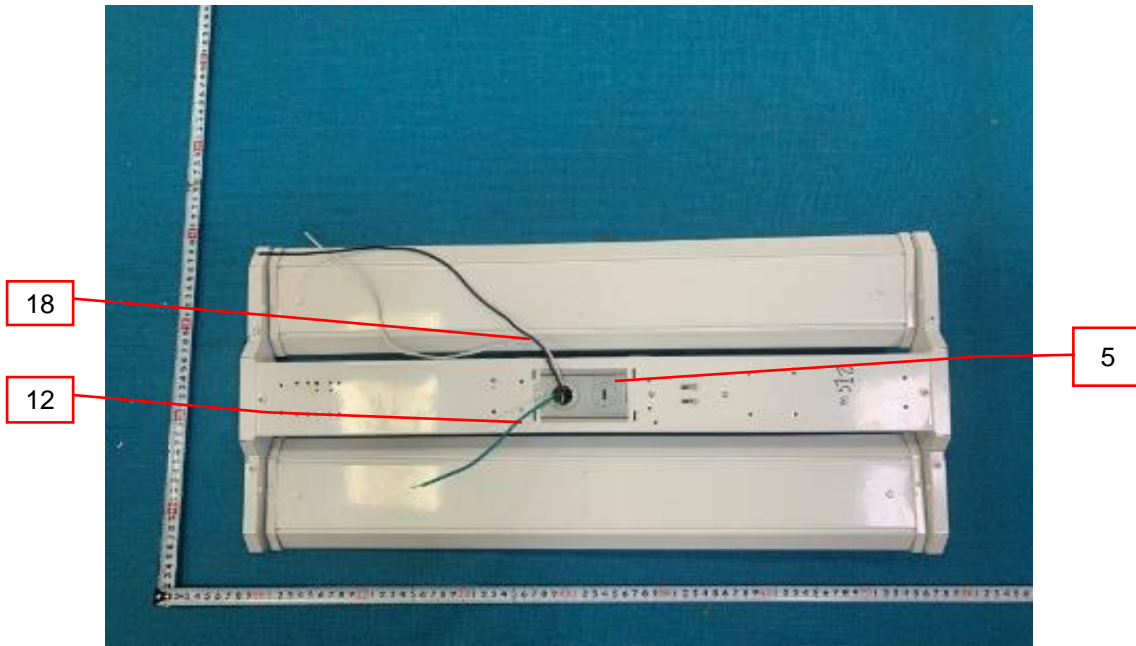


**Photo 13 - External view of model TS-LHB6-2FT225W-X-TCP(MS), also represents of model TS-LHB6-2FT165W-X-TCP(MS)**

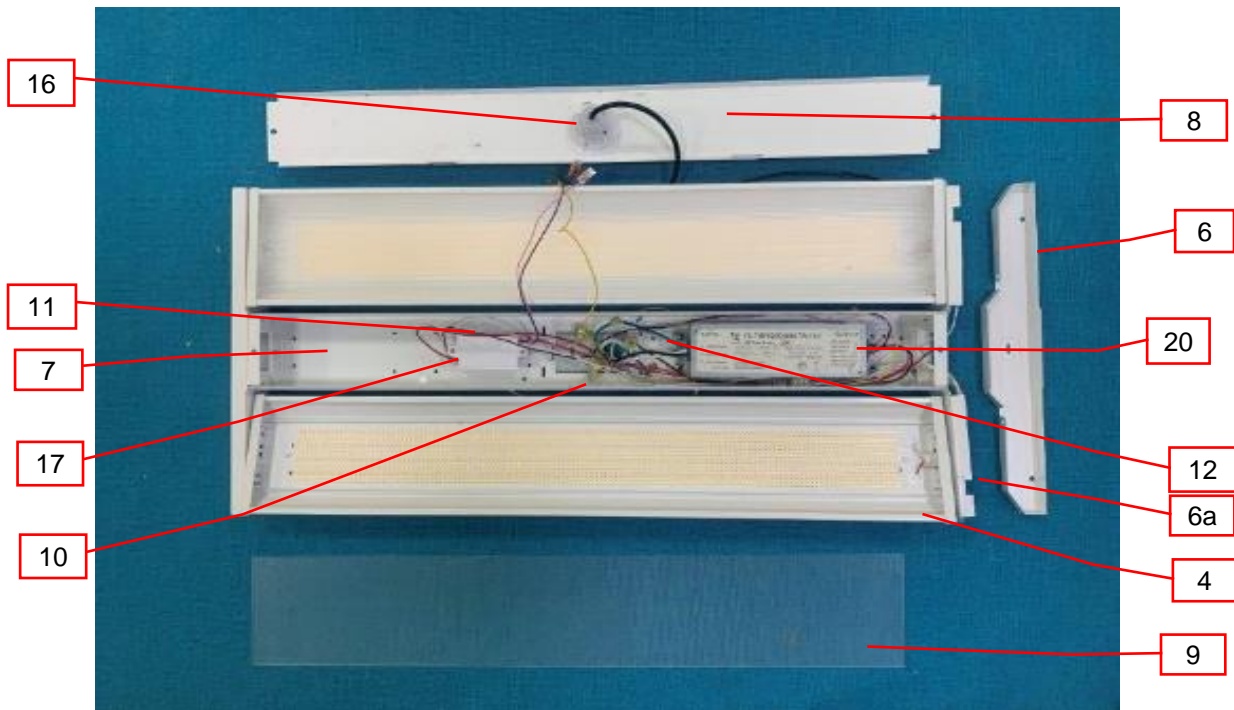


**3.0 Product Photographs**

**Photo 13a** - External view of model TS-LHB6-2FT225W-X-TCP(MS), also represents of model TS-LHB6-2FT165W-X-TCP(MS)

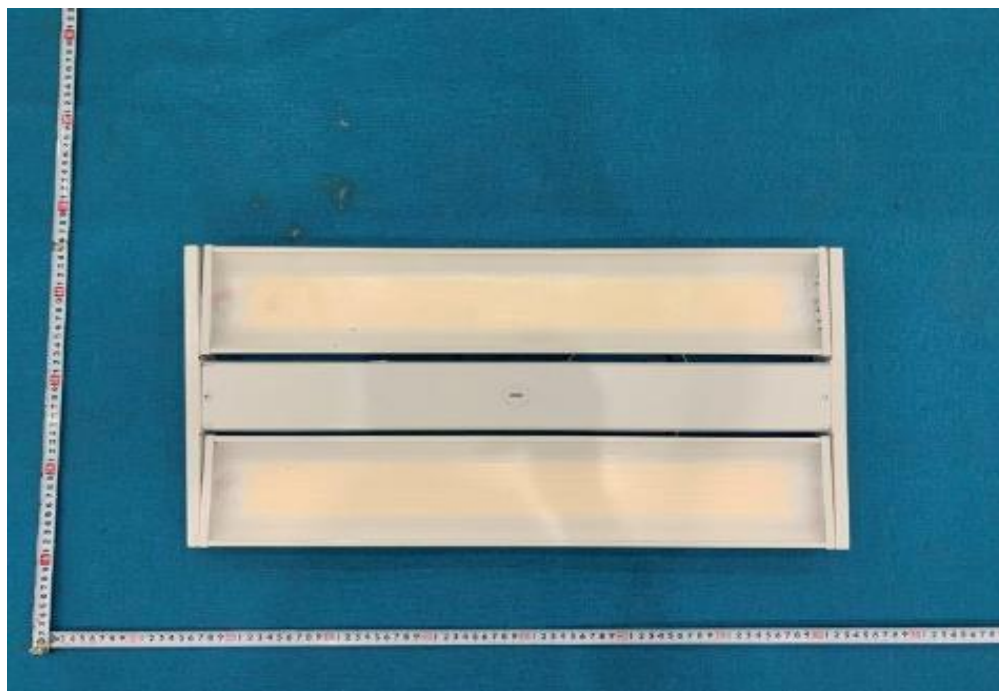


**Photo 13b** - Internal view of model TS-LHB6-2FT225W-X-TCP(MS), also represents of model TS-LHB6-2FT165W-X-TCP(MS)

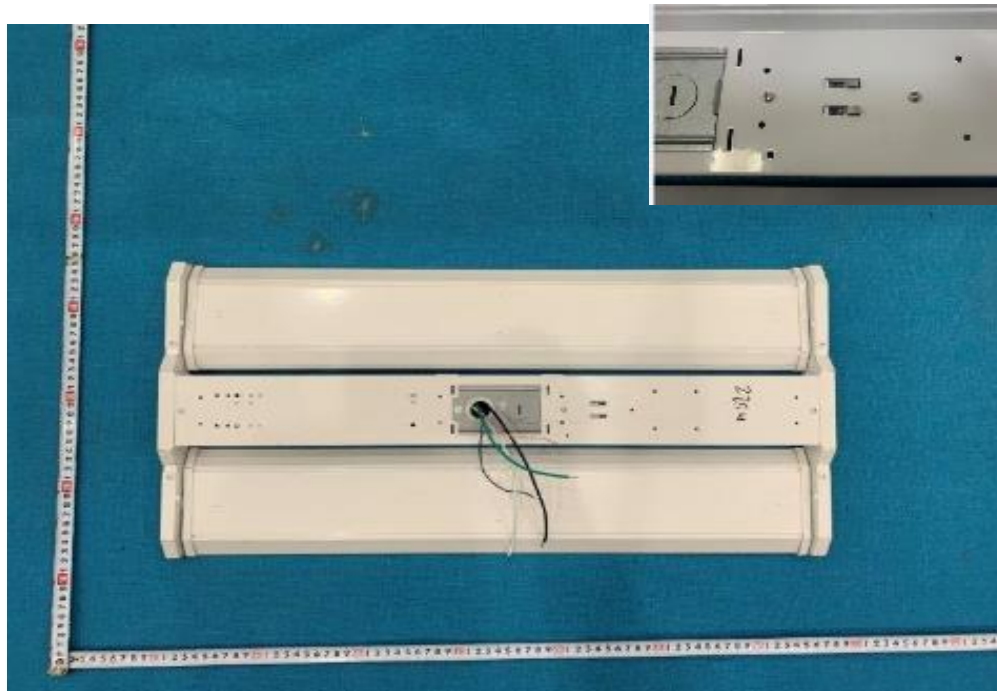


### 3.0 Product Photographs

**Photo 14** - External view of model TS-LHB6-2FT225W-X-TCP, also represents of model TS-LHB6-2FT165W-X-TCP

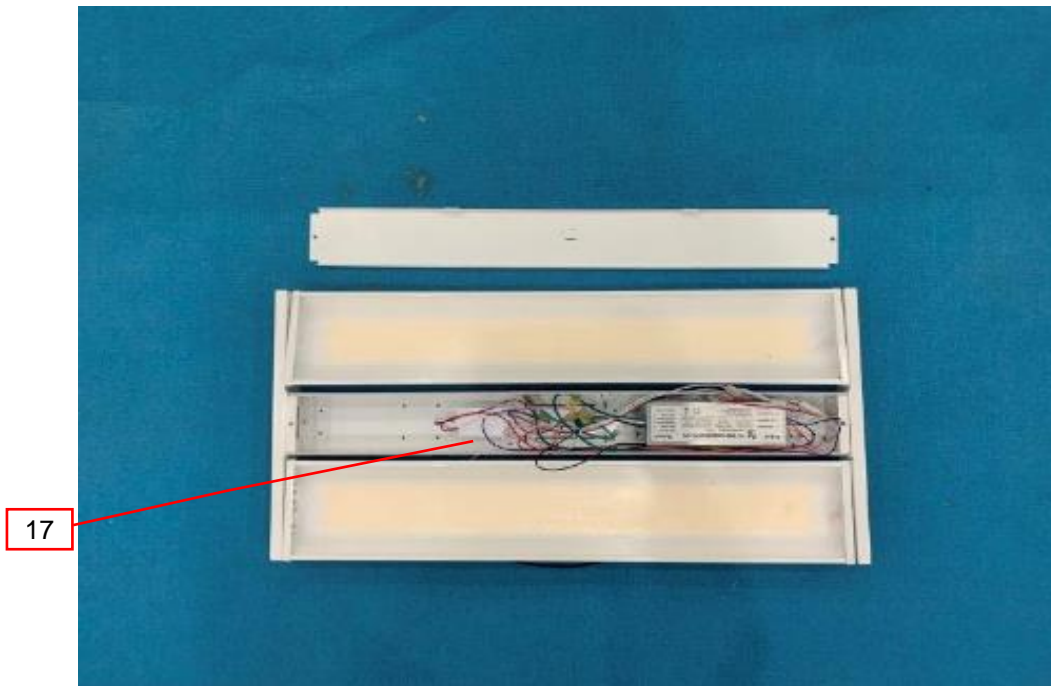


**Photo 14a** - External view of model TS-LHB6-2FT225W-X-TCP, also represents of model TS-LHB6-2FT165W-X-TCP

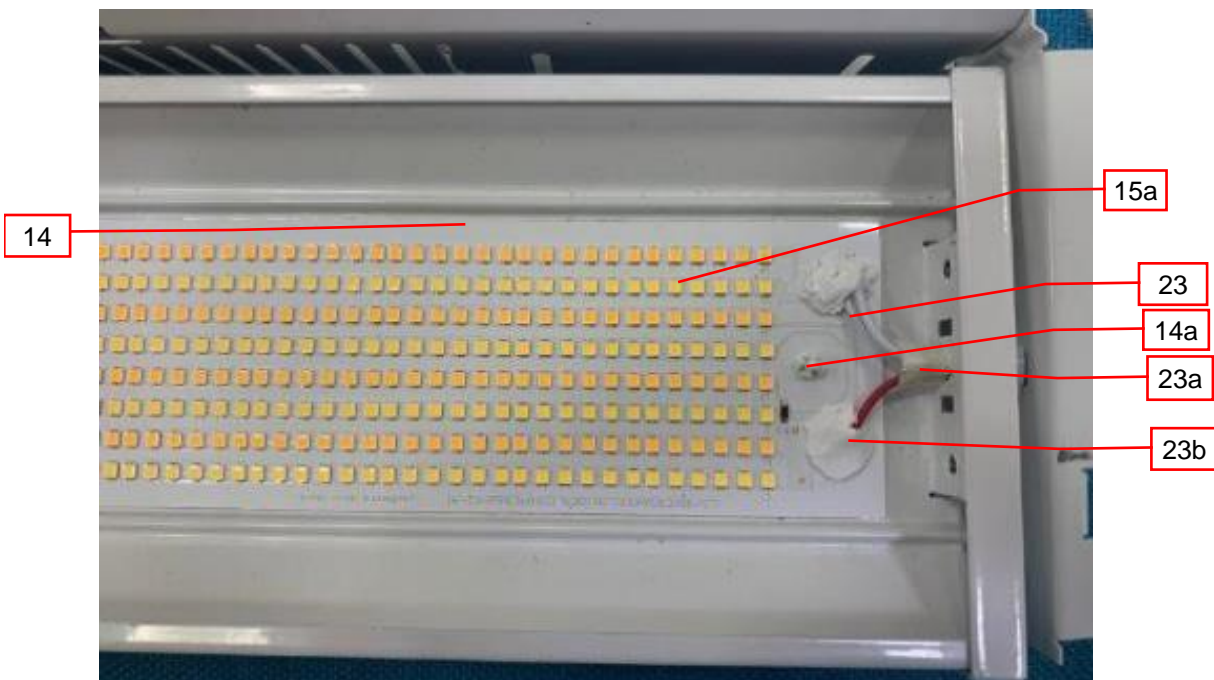


**3.0 Product Photographs**

**Photo 14b** - Internal view of model TS-LHB6-2FT225W-X-TCP, also represents of model TS-LHB6-2FT165W-X-TCP, same as photo 13b except sensor and LED driver

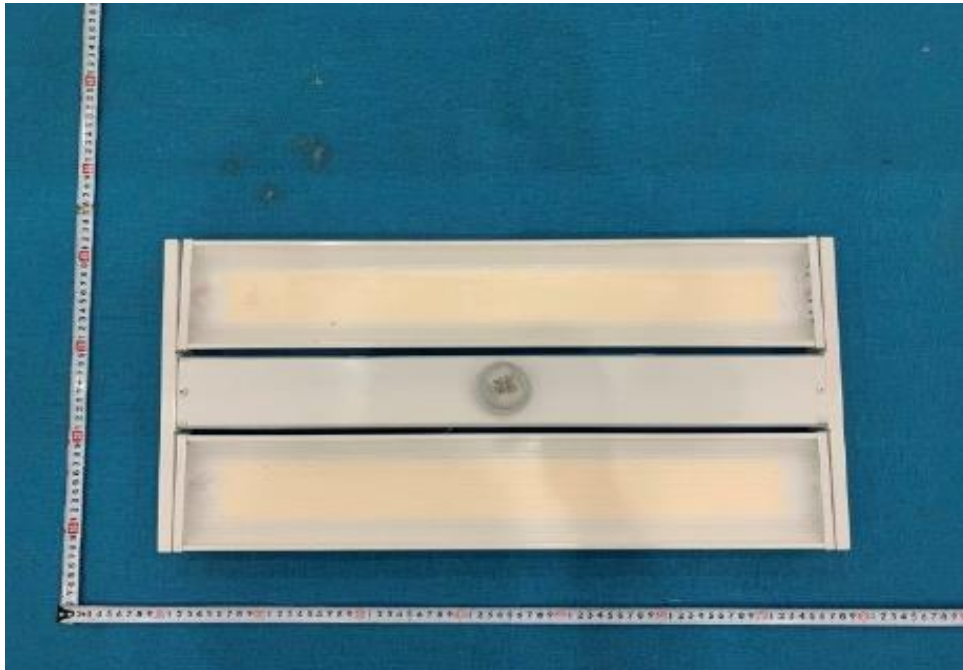


**Photo 14c** - LED PCB view of model TS-LHB6-2FT225W-X-TCP(XX), also represents of model TS-LHB6-2FT165W-X-TCP(XX)

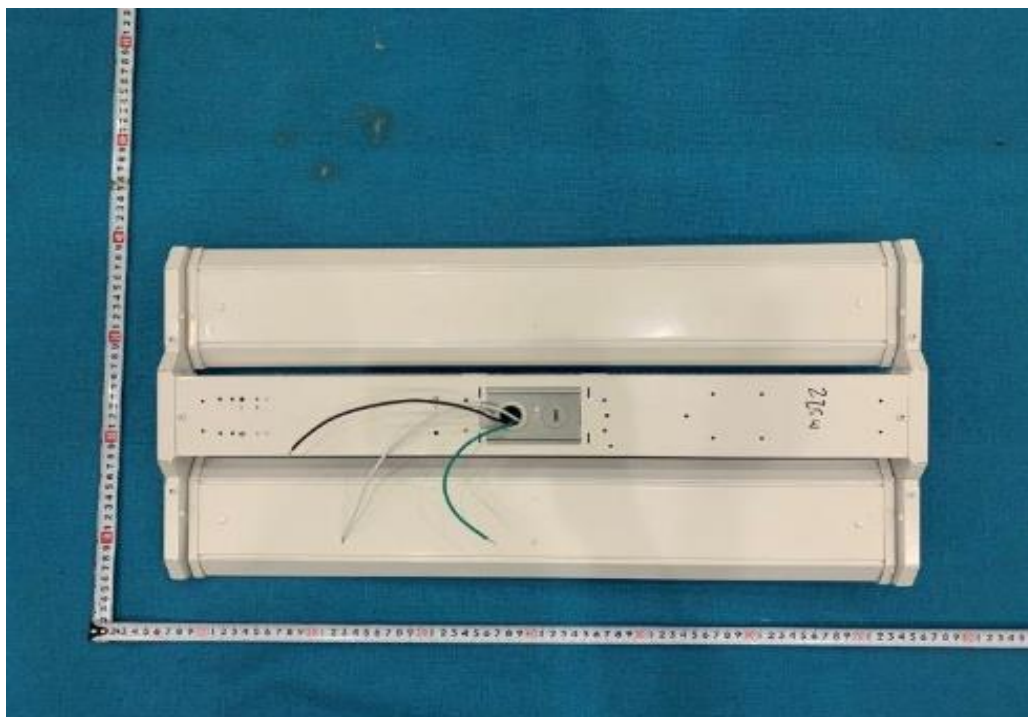


### 3.0 Product Photographs

**Photo 15** - External view of model TS-LHB6-2FT225W-X-XXK(MS), also represents of model TS-LHB5-4FT225W-X-XXK(MS)

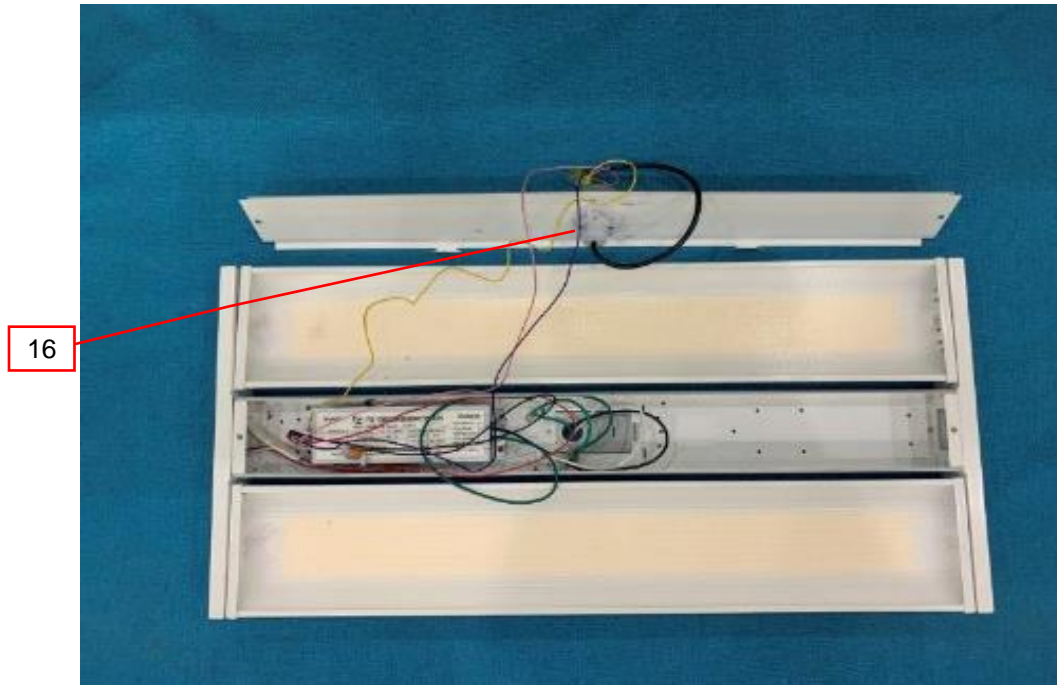


**Photo 15a** - External view of model TS-LHB6-2FT225W-X-XXK(MS), also represents of model TS-LHB5-4FT225W-X-XXK(MS)



### 3.0 Product Photographs

**Photo 15b** - Internal view of model TS-LHB6-2FT225W-X-XXK(MS), also represents of model TS-LHB5-4FT225W-X-XXK(MS), same as photo 13b except Controller Box (TCP) and LED driver

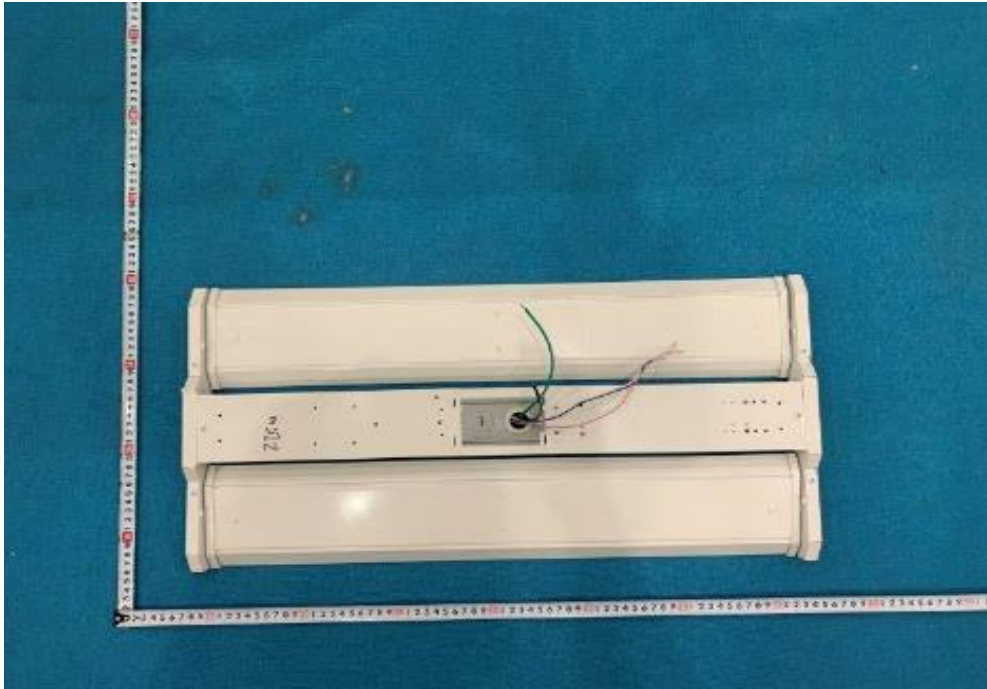


**Photo 16** - External view of model TS-LHB6-2FT225W-X-XXK, also represents of model TS-LHB5-4FT225W-X-XXK.

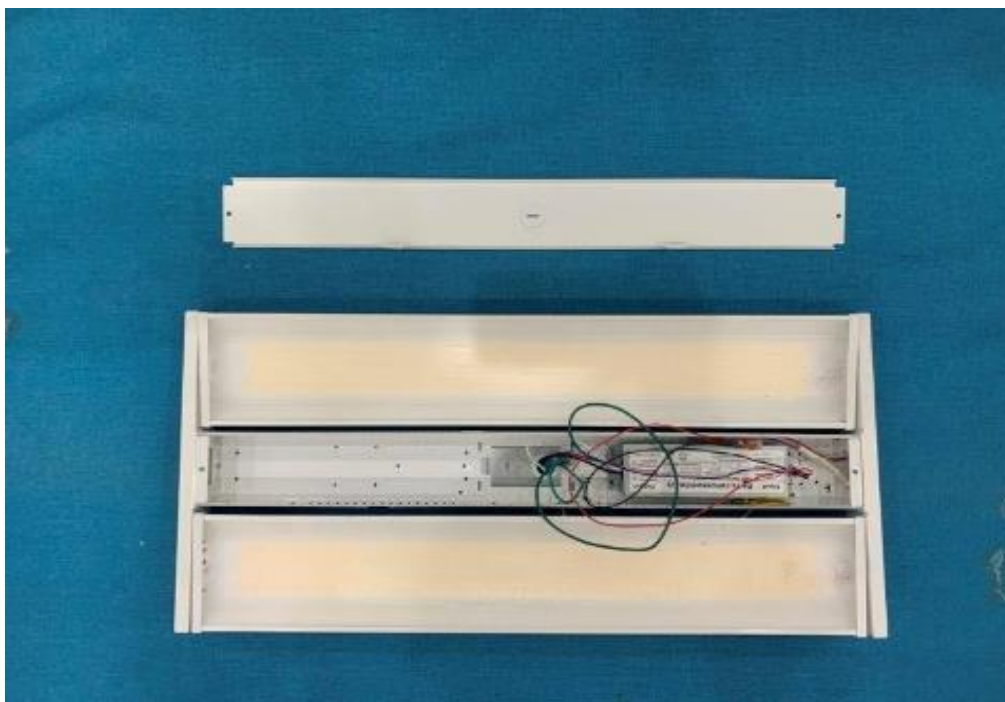


### 3.0 Product Photographs

**Photo 16a** - External view of model TS-LHB6-2FT225W-X-XXK, also represents of model TS-LHB5-4FT225W-X-XXK.

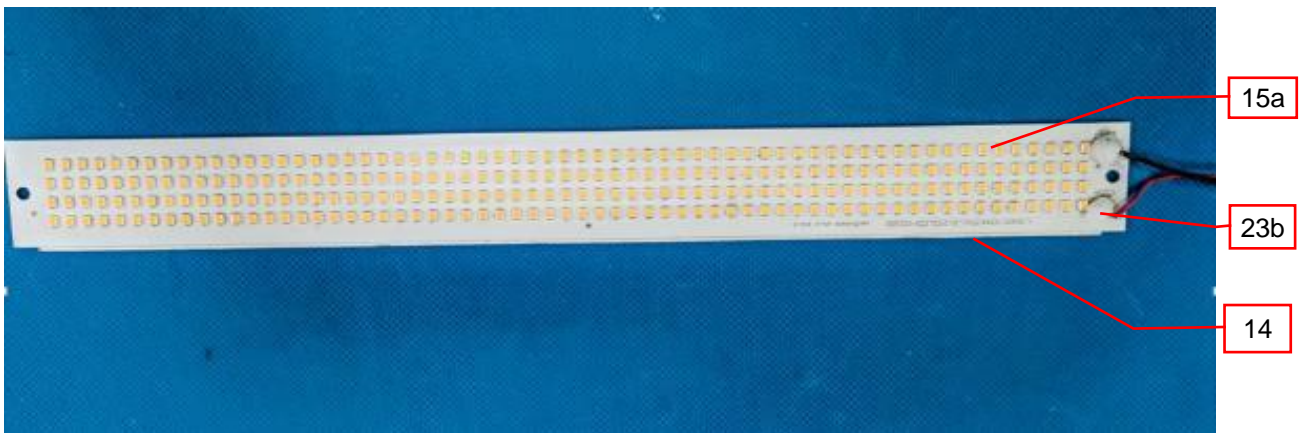


**Photo 16b** - Internal view of model TS-LHB6-2FT225W-X-XXK, also represents of model TS-LHB5-4FT225W-X-XXK, same as photo 13b except Controller Box (TCP) and sensor and LED driver



### 3.0 Product Photographs

**Photo 16c** - LED PCB view of model TS-LHB6-2FT225W-X-XXK(XX)



**Photo 17** - External view of model TS-LHB5-4FT225W-X-XXK(MS), also represents of model TS-LHB5-4FT225W-X-HV-XXK(MS)

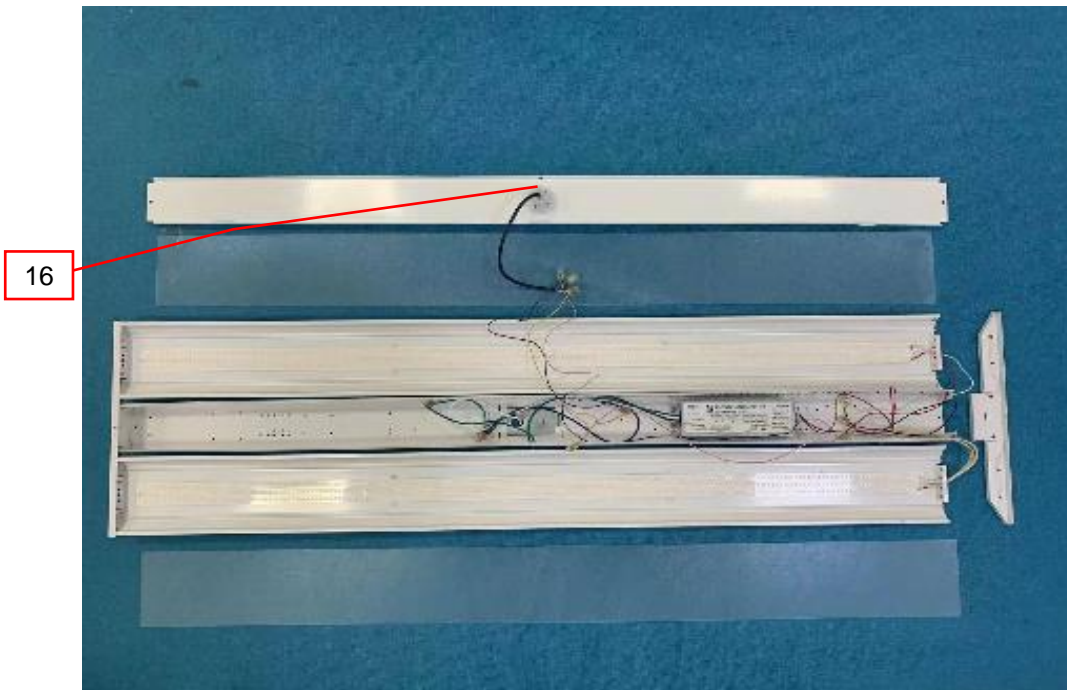


### 3.0 Product Photographs

**Photo 17a** - External view of model TS-LHB5-4FT225W-X-XXK(MS), also represents of model TS-LHB5-4FT225W-X-HV-XXK(MS)



**Photo 17b** - Internal view of model TS-LHB5-4FT225W-X-XXK(MS), same as photo 13b except Controller Box (TCP) and LED driver

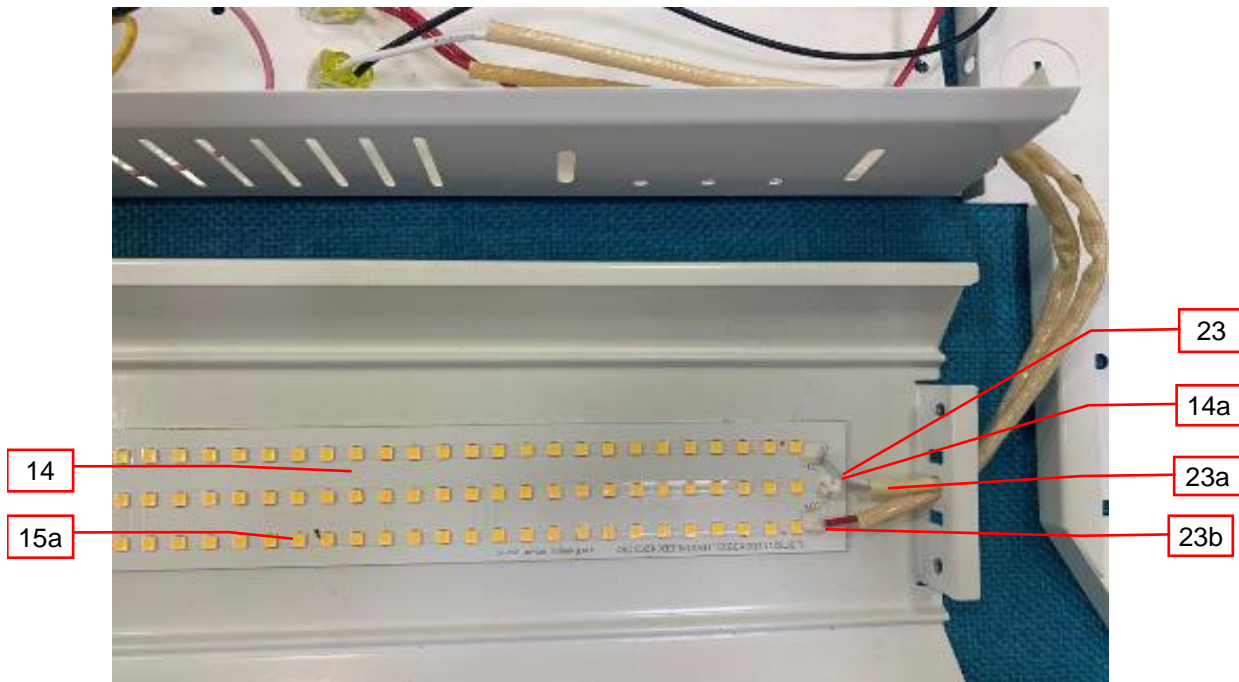


### 3.0 Product Photographs

**Photo 18** - Internal view of model TS-LHB5-4FT225W-X-XXK, also represents of model TS-LHB5-4FT225W-X-HV-XXK, same as photo 13b except Controller Box (TCP) and sensor

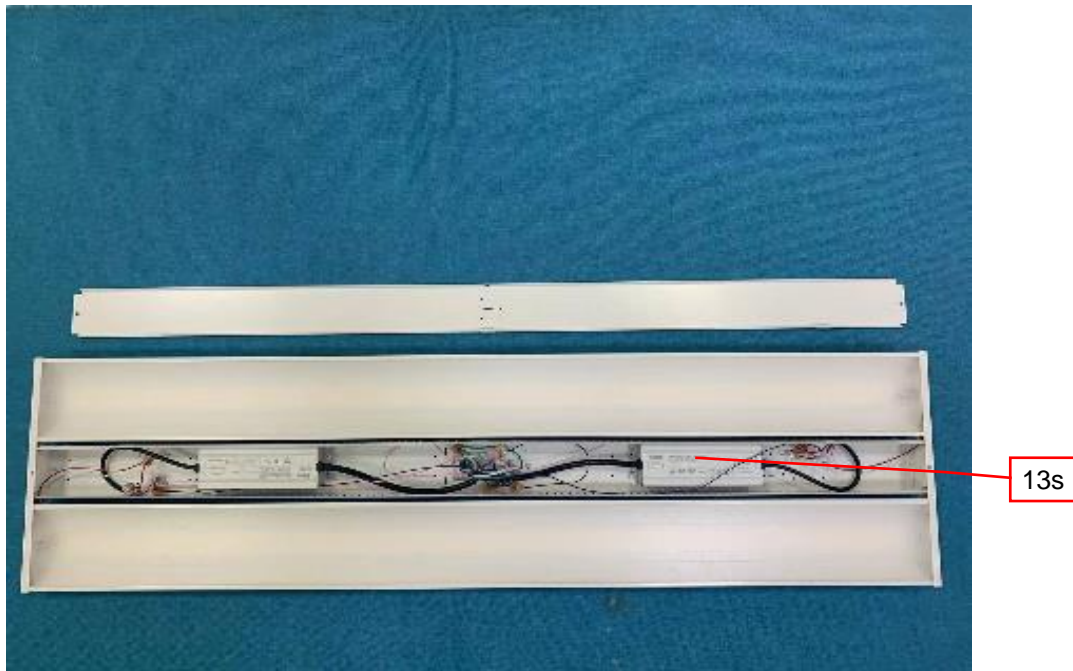


**Photo 18a** - LED PCB view of model TS-LHB5-4FT225W-X-XXK(XX) and TS-LHB5-4FT225W-X-HV-XXK(XX), also represents model TS-LHB6-2FT225W-X-XXK(XX)



### 3.0 Product Photographs

**Photo 19** - Internal view of model TS-LHB5-4FT225W-X-HV-XXK, same as photo 13b except Controller Box (TCP) and sensor



**Photo 20** - LED driver view of model FS-TMF026B0850TW-12V, also represents of model FS-TMF026B0850TW and FS-TMF019BXXXXTC-12V

