

1.0 Reference and Address			
Report Number	22050289HKG-001	Original Issued: 8-Jun-2022	Revised: 31-Mar-2023
Standard(s)	Luminaires [UL 1598:2021 Ed.5+R:18Jun2021]		
	Luminaires [CSA C22.2#250.0:2021 Ed.5+U1]		
Applicant	Torshare Ltd	Manufacturer 1	Torshare Ltd
Address	5th Minying Road, No. 3 Industrial Area Shuitian Shiyuan Town, Bao'an District, SHENZHEN Guangdong 518108	Address	5th Minying Road, No. 3 Industrial Area Shuitian Shiyuan Town, Bao'an District, SHENZHEN Guangdong 518108
Country	CHINA	Country	CHINA
Contact	Jing Jing Qiu	Contact	Jing Jing Qiu
Phone	86-755-29833929-636	Phone	86-755-29833929-636
FAX	NA	FAX	NA
Email	qjj@torshare.cn	Email	qjj@torshare.cn
Manufacturer 2	Viet Nam Torshare Co Ltd		
Address	L4.8 B Do Son Industrial Ngoc Xuyen WARD DO SON DISTRICT Hai Phong		
Country	VIETNAM		
Contact	Bruce Bian		
Phone	84-0837123869		
FAX	NA		
Email	bwm@torshare.com		

2.0 Product Description	
Product	LED Barn Light
Brand name	NA
Description	These products covered by this report are surface wall or pole mounted LED luminaire intended for wet location use. Provided with flexible cord for supply connections.
Models	<p>TS-BL0230-30W-, TS-BL0240-40W-, TS-BL0250-50W-, TS-BL0260-60W-, TS-BL0270-70W- or TS-BL0280-80W-; followed by one to two characters; may be followed by -; may be followed by two numbers; may be followed by K; may be followed by (MS) or (PT).</p> <p>TS-BL0250-50W-, TS-BL0270-70W- or TS-BL0280-80W-; followed by one to two characters; followed by -TC or -TCP; may be followed by (MS) or (PT).</p> <p>TS-BL0250-50W-, TS-BL0270-70W- or TS-BL0280-80W-; followed by one to two characters; followed by -TP; may be followed by -; may be followed by two numbers; may be followed by K; may be followed by (MS) or (PT).</p> <p>TS-BL0280-80W-; followed by one to two characters; followed by -MV; may be followed by -TP; may be followed by -; may be followed by two numbers; may be followed by K; may be followed by (MS) or (PT).</p> <p>TS-BL0280-80W-; followed by one to two characters; followed by -MV; followed by -TC or -TCP; may be followed by -; may be followed by (MS) or (PT).</p>
Model Similarity	<p>They are similar in electrical and mechanical construction, differences among them are LED quantity, LED driver and electrical rating.</p> <p>Model nomenclature: TS-BL0230-30W-X-XXXX(XX), TS-BL0240-40W-X-XXXX(XX), TS-BL0250-50W-X-XXXX(XX), TS-BL0260-60W-X-XXXX(XX), TS-BL0270-70W-X-XXXX(XX), TS-BL0280-80W-X-XXXX(XX), TS-BL0280-80W-X-MV-XXXX(XX)</p> <ol style="list-style-type: none"> 1. Suffix "X" can be one to two character denote lighting efficiency. 2. Suffix "XXXX" can be XXK, TC, TP-XXK or TCP denote the lighting control function; where <ol style="list-style-type: none"> a. XXK represent single color temperature (CCT), where XX can be blank or two numbers such as 35=3500K; b. TC represent color temperature (CCT) selectable by CCT switch, such as 3500K/4000K/5000K; c. TP represent watt selectable by Power switch, such as 40W/60W/80W; d. TCP represent color temperature (CCT) and watt selectable by CCT and Power switch; such as 3500K/4000K/5000K and 40W/60W/80W. 3. Suffix "(XX)" can be (MS), (PT) or blank denote the sensor function; where <ol style="list-style-type: none"> a. (MS) denotes provided with Motion Sensor or Microwave sensor; b. (PT) denotes provided with photocell; c. Blank denotes models without Motion Sensor and photocell.

2.0 Product Description					
Model No.	LED Driver	Number of LED	Dimension / mm	Weight / kg	
TS-BL0230-30W-X-XXK	FS-TS056B0220TC	88	380 x 240 x 120	1.94	
TS-BL0230-30W-X-XXK(MS)	FS-TS056B0220TC-12V				
TS-BL0230-30W-X-XXK(PT)	FS-TS056B0220TC				
TS-BL0240-40W-X-XXK	FS-TS056B0300TC	88 or 132	380 x 240 x 120	1.94	
TS-BL0240-40W-X-XXK(MS)	FS-TS056B0300TC-12V				
TS-BL0240-40W-X-XXK(PT)	FS-TS056B0300TC				
TS-BL0250-50W-X-XXK	FS-TS056B0360TC	132	380 x 240 x 120	1.95	
TS-BL0250-50W-X-XXK(MS)	FS-TS056B0360TC-12V				
TS-BL0250-50W-X-XXK(PT)	FS-TS056B0360TC				
TS-BL0250-50W-X-TP-XXK, TS-BL0250-50W-X-TC, TS-BL0250-50W-X-TCP	FS-TS056B0360TC	264	380 x 240 x 120	1.95	
TS-BL0250-50W-X-TP-XXK(MS), TS-BL0250-50W-X-TC(MS), TS-BL0250-50W-X-TCP(MS)	FS-TS056B0360TC-12V				
TS-BL0250-50W-X-TP-XXK(PT), TS-BL0250-50W-X-TC(PT), TS-BL0250-50W-X-TCP(PT)	FS-TS056B0360TC				
TS-BL0260-60W-X-XXK	FS-TS056B0440TC	132 or 176	380 x 240 x 120	1.95	
TS-BL0260-60W-X-XXK(MS)	FS-TS056B0440TC-12V				
TS-BL0260-60W-X-XXK(PT)	FS-TS056B0440TC				
TS-BL0270-70W-X-XXK	FS-TS056B0500TC	176	380 x 240 x 120	1.96	
TS-BL0270-70W-X-XXK(MS)	FS-TS056B0500TC-12V				
TS-BL0270-70W-X-XXK(PT)	FS-TS056B0500TC				
TS-BL0270-70W-X-TP-XXK, TS-BL0270-70W-X-TC, TS-BL0270-70W-X-TCP	FS-TS056B0500TC	352	380 x 240 x 120	1.96	
TS-BL0270-70W-X-TP-XXK(MS), TS-BL0270-70W-X-TC(MS), TS-BL0270-70W-X-TCP(MS)	FS-TS056B0500TC-12V				
TS-BL0270-70W-X-TP-XXK(PT), TS-BL0270-70W-X-TC(PT), TS-BL0270-70W-X-TCP(PT)	FS-TS056B0500TC				
TS-BL0280-80W-X-XXK	FS-TS056B0580TC	220	380 x 240 x 120	1.96	
TS-BL0280-80W-X-MV-XXK	FS-TS056B0580TCH				
TS-BL0280-80W-X-XXK(MS)	FS-TS056B0580TC-12V				
TS-BL0280-80W-X-MV-XXK(MS)	FS-TS056B0580TCH-12V	440	380 x 240 x 120	1.96	
TS-BL0280-80W-X-XXK(PT)	FS-TS056B0580TC				
TS-BL0280-80W-X-MV-XXK(PT)	FS-TS056B0580TCH-12V				
TS-BL0280-80W-X-TP-XXK, TS-BL0280-80W-X-TC, TS-BL0280-80W-X-TCP	FS-TS056B0580TC	440	380 x 240 x 120	1.96	
TS-BL0280-80W-X-MV-TP-XXK, TS-BL0280-80W-X-MV-TC, TS-BL0280-80W-X-MV-TCP	FS-TS056B0580TCH				
TS-BL0280-80W-X-TP-XXK(MS), TS-BL0280-80W-X-TC(MS), TS-BL0280-80W-X-TCP(MS)	FS-TS056B0580TC-12V				
TS-BL0280-80W-X-MV-TP-XXK(MS), TS-BL0280-80W-X-MV-TC(MS), TS-BL0280-80W-X-MV-TCP(MS)	FS-TS056B0580TCH-12V	440	380 x 240 x 120	1.96	
TS-BL0280-80W-X-TP-XXK(PT), TS-BL0280-80W-X-TC(PT), TS-BL0280-80W-X-TCP(PT)	FS-TS056B0580TC				
TS-BL0280-80W-X-TP-XXK(PT), TS-BL0280-80W-X-TC(PT), TS-BL0280-80W-X-TCP(PT)	FS-TS056B0580TC				

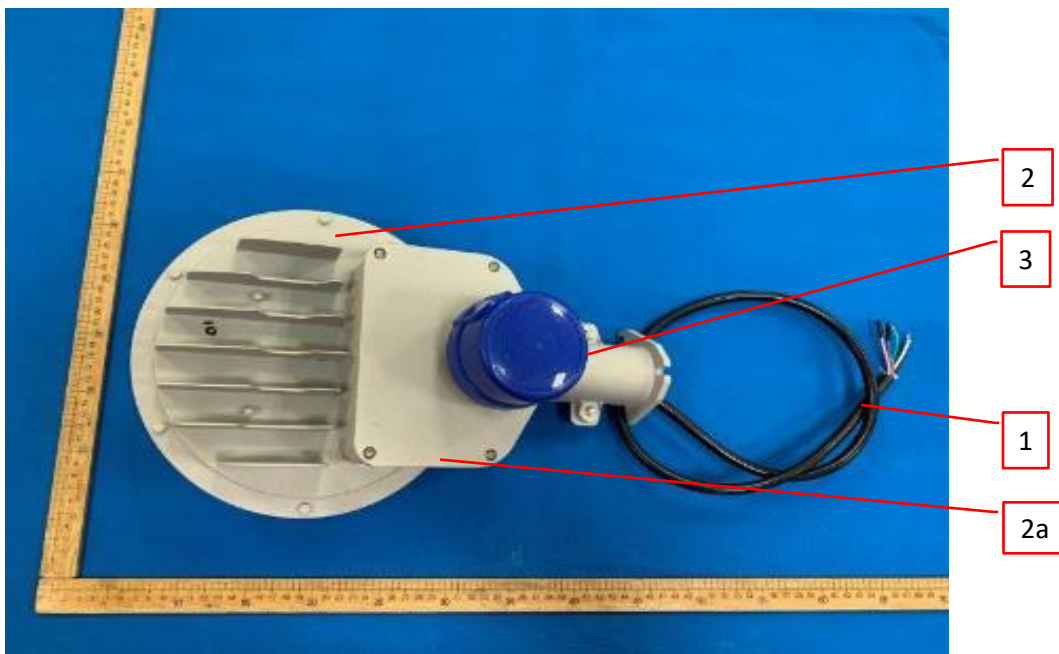
2.0 Product Description					
	TS-BL0280-80W-X-MV-TP-XXK(PT), TS-BL0280-80W-X-MV-TC(PT), TS-BL0280-80W-X-MV-TCP(PT)	FS-TS056B0580TCH-12V	440	380 x 240 x 120	1.96
Ratings	<u>Model No.</u>	<u>Voltage, Frequency</u>	<u>Current / A</u>	<u>Wattage / W Max.</u>	
	TS-BL0230-30W-X-XXXX(X)	120-277Vac, 50/60Hz	0.28	30	
	TS-BL0240-40W-X-XXXX(X)		0.37	40	
	TS-BL0250-50W-X-XXXX(X)		0.46	50	
	TS-BL0260-60W-X-XXXX(X)		0.55	60	
	TS-BL0270-70W-X-XXXX(X)		0.64	70	
	TS-BL0280-80W-X-XXXX(X)		0.73	80	
	TS-BL0280-80W-X-MV-XXXX(X)	120-347Vac, 50/60Hz	0.73	80	
Other Ratings	Ta = 40°C				

3.0 Product Photographs

Photo 1 - External view of model TS-BL0280-80W-X-XXXX(PT), also represent of models TS-BL0270-70W-X-XXXX(PT), TS-BL0260-60W-X-XXK(PT), TS-BL0250-50W-X-XXXX(PT), TS-BL0240-40W-X-XXK(PT), TS-BL0230-30W-X-XXK(PT)



Photo 2 - External view of model TS-BL0280-80W-X-XXXX(PT), also represent of models TS-BL0270-70W-X-XXXX(PT), TS-BL0260-60W-X-XXK(PT), TS-BL0250-50W-X-XXXX(PT), TS-BL0240-40W-X-XXK(PT), TS-BL0230-30W-X-XXK(PT)

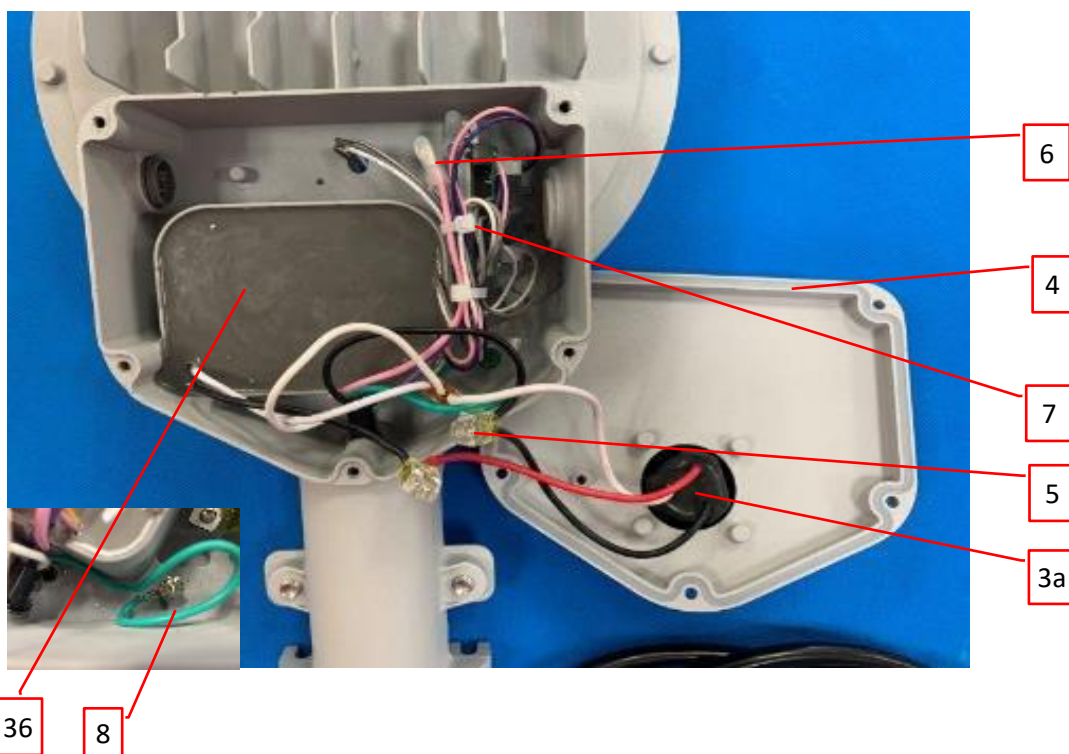


3.0 Product Photographs

Photo 3 - External view of model TS-BL0280-80W-X-XXXX(PT), also represent of models TS-BL0270-70W-X-XXXX(PT), TS-BL0260-60W-X-XXK(PT), TS-BL0250-50W-X-XXXX(PT), TS-BL0240-40W-X-XXK(PT), TS-BL0230-30W-X-XXK(PT)



Photo 4 - Internal view of model TS-BL0280-80W-X-XXXX(PT), also represent of models TS-BL0270-70W-X-XXXX(PT), TS-BL0260-60W-X-XXK(PT), TS-BL0250-50W-X-XXXX(PT), TS-BL0240-40W-X-XXK(PT), TS-BL0230-30W-X-XXK(PT), provided with Photocell

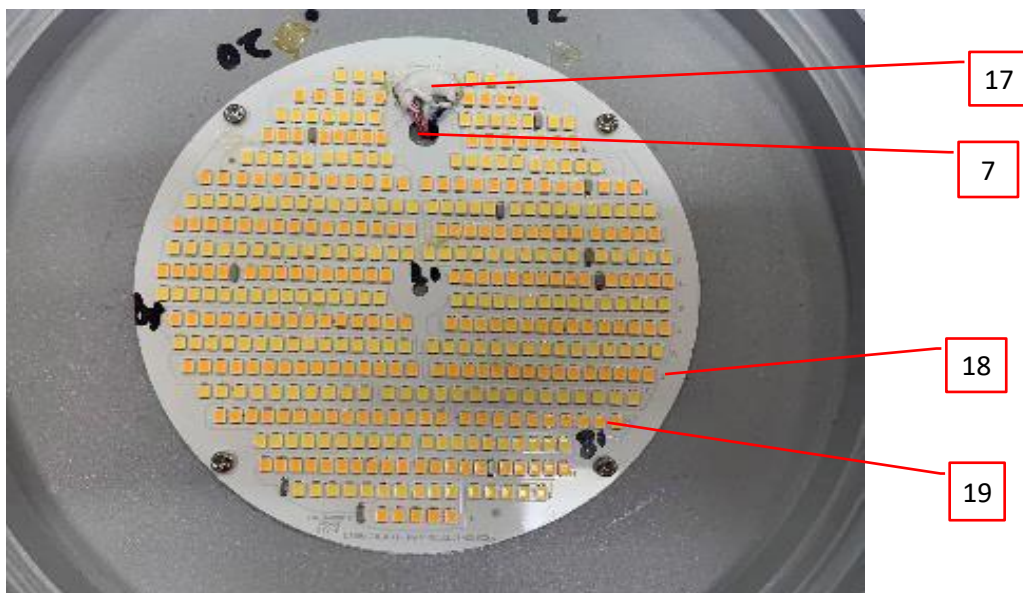


3.0 Product Photographs

Photo 5 - Lamp compartment internal view of model TS-BL0280-80W-X-XXXX(PT), also represent of models TS-BL0230-30W-X-XXK(XX), TS-BL0240-40W-X-XXK(XX), TS-BL0250-50W-X-XXXX(XX), TS-BL0260-60W-X-XXK(XX), TS-BL0270-70W-X-XXXX(XX), TS-BL0280-80W-X-XXXX(XX)



Photo 5a - LED PCB view of model TS-BL0280-80W-X-TC(XX), also represents of models TS-BL0280-80W-X-TP-XXK(XX), TS-BL0280-80W-X-TCP(XX), and wire securement of models TS-BL0230-30W-X-XXK(XX), TS-BL0240-40W-X-XXK(XX), TS-BL0250-50W-X-XXXX(XX), TS-BL0260-60W-X-XXK(XX), TS-BL0270-70W-X-XXXX(XX), TS-BL0280-80W-X-XXXX(XX)



3.0 Product Photographs

Photo 6 - Cable Gland view of model TS-BL0280-80W-X-XXXX(PT), also represent of models TS-BL0230-30W-X-XXK(XX), TS-BL0240-40W-X-XXK(XX), TS-BL0250-50W-X-XXXX(XX), TS-BL0260-60W-X-XXK(XX), TS-BL0270-70W-X-XXXX(XX), TS-BL0280-80W-X-XXXX(XX), TS-BL0280-80W-X-MV-XXXX(XX)

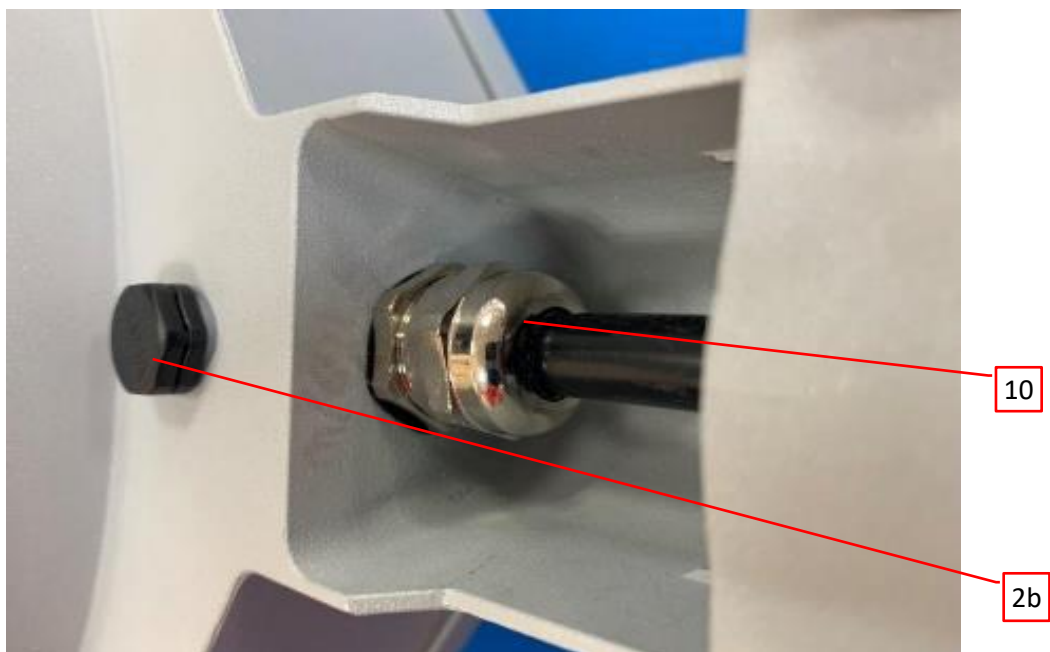
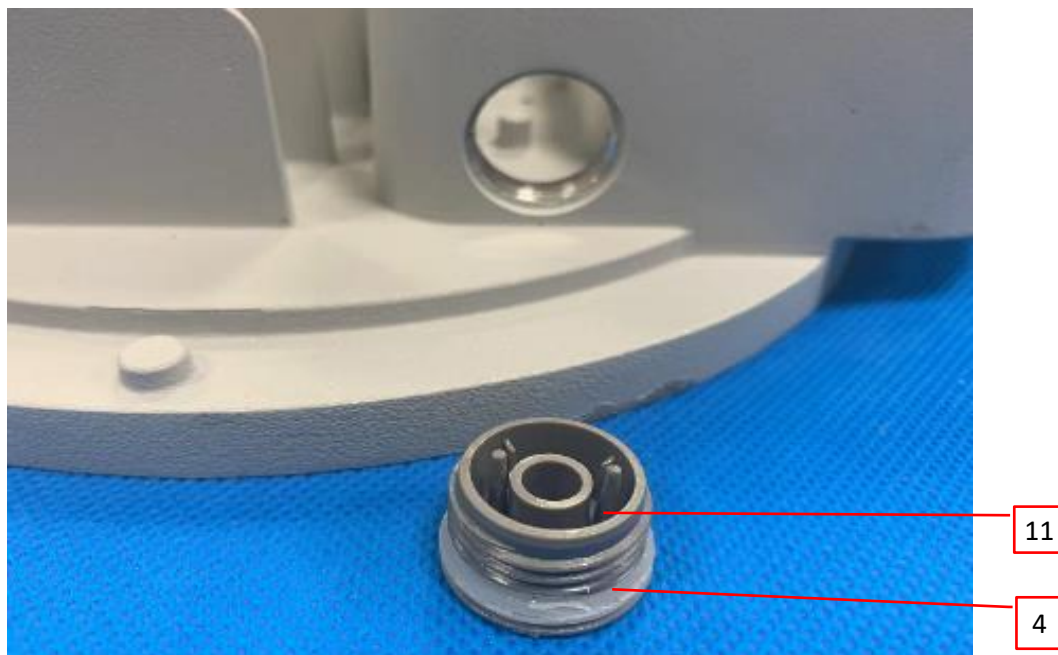


Photo 7 - Closed-up view of model TS-BL0280-80W-X-XXXX(XX), also represent of models TS-BL0270-70W-X-XXXX(XX), TS-BL0260-60W-X-XXK(XX), TS-BL0250-50W-X-XXXX(XX), TS-BL0240-40W-X-XXK(XX), TS-BL0230-30W-X-XXK(XX), where (XX) can be (PT) or blank, and model TS-BL0280-80W-X-MV-XXXX(XX)



3.0 Product Photographs

Photo 8 - Closed-up view of model TS-BL0280-80W-X-XXXX(XX), also represent of models TS-BL0270-70W-X-XXXX(XX), TS-BL0250-50W-X-XXXX(XX), TS-BL0280-80W-X-MV-XXXX(XX), where XXXX can be TC, TP-XXK or TCP

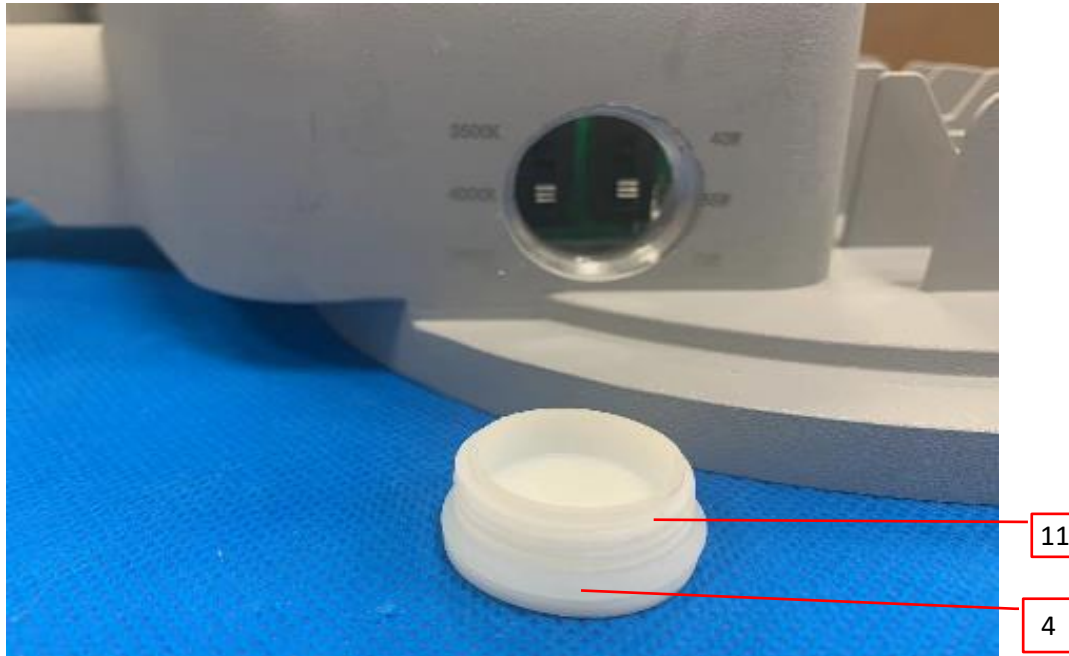


Photo 8a - Closed-up view of model TS-BL0280-80W-X-XXK(XX), also represent of models TS-BL0270-70W-X-XXK(XX), TS-BL0260-60W-X-XXK(XX), TS-BL0250-50W-X-XXK(XX), TS-BL0240-40W-X-XXK(XX), TS-BL0230-30W-X-XXK(XX), where (XX) can be (PT) or blank, and model TS-BL0280-80W-X-MV-XXK



3.0 Product Photographs

Photo 9 - Control Switch PCB mounting view of model TS-BL0280-80W-X-TCP(PT), also represent of models TS-BL0280-80W-X-XXXX(PT), TS-BL0270-70W-X-XXXX(PT), TS-BL0250-50W-X-XXXX(PT), where XXXX can be TC, TP-XXK or TCP

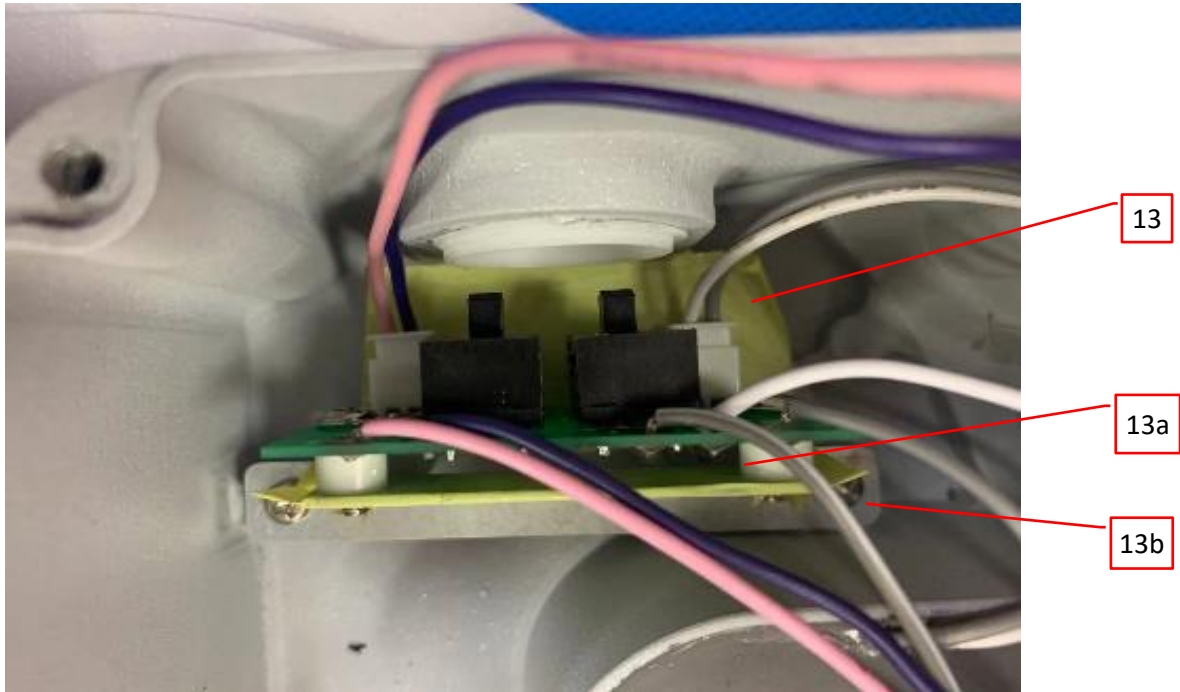
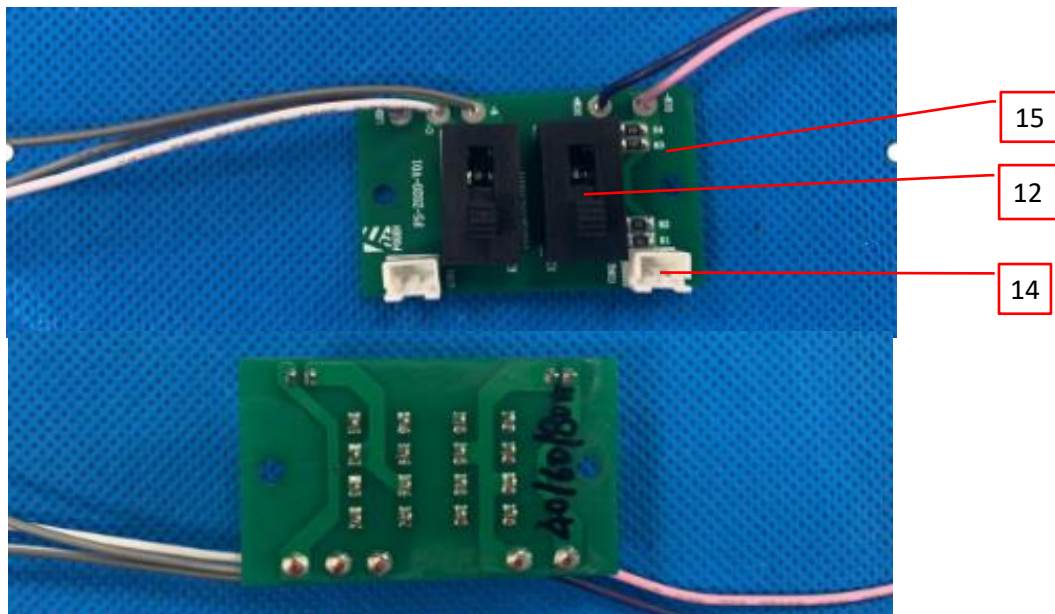


Photo 10 - Control Switch PCB of model TS-BL0280-80W-X-TCP(PT), TS-BL0270-70W-X-TCP(PT), TS-BL0250-50W-X-TCP(PT)



3.0 Product Photographs

Photo 10a - Control Switch PCB of model TS-BL0280-80W-X-TP-XXK(PT), TS-BL0270-70W-X-TP-XXK(PT), TS-BL0250-50W-X-TP-XXK(PT)

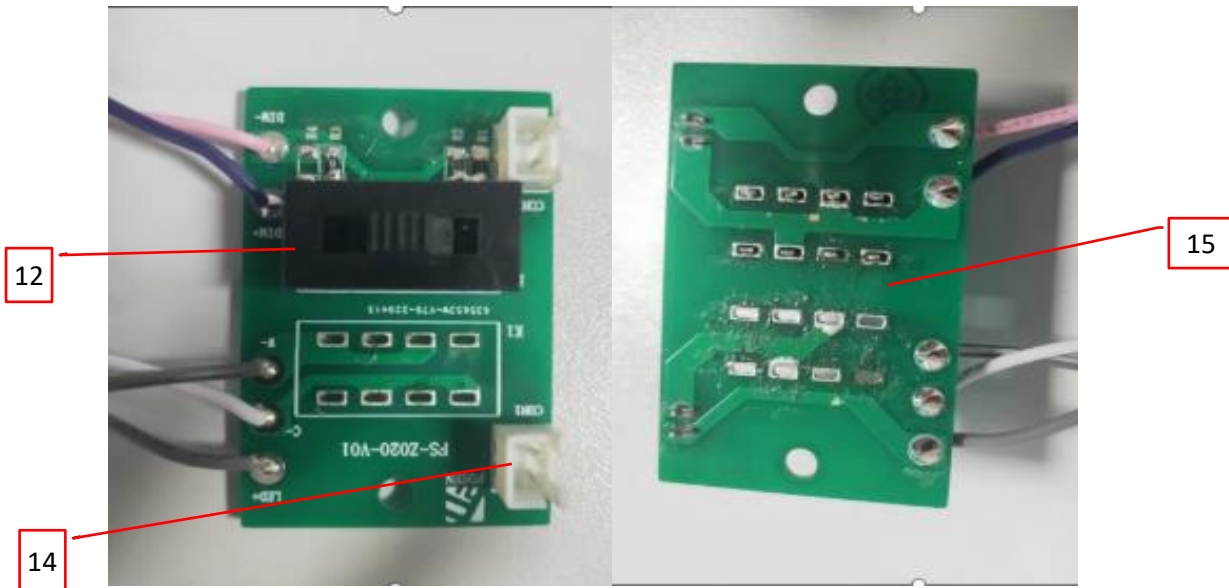
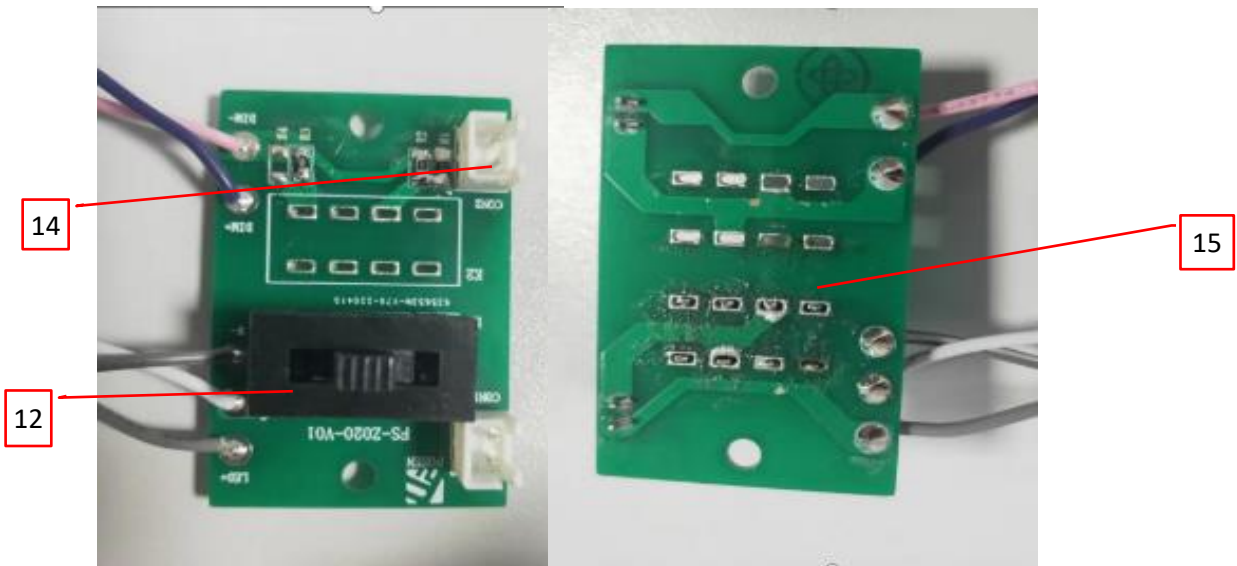


Photo 10b - Control Switch PCB of model TS-BL0280-80W-X-TC(PT), TS-BL0270-70W-X-TC(PT), TS-BL0250-50W-X-TC(PT)



3.0 Product Photographs

Photo 11 - External view of model TS-BL0280-80W-X-XXXX(XX), also represent of models TS-BL0270-70W-X-XXXX(XX), TS-BL0260-60W-X-XXK(XX), TS-BL0250-50W-X-XXXX(XX), TS-BL0240-40W-X-XXK(XX), TS-BL0230-30W-X-XXK(XX), where (XX) can be (MS) or blank, and model TS-BL0280-80W-X-MV-XXXX(XX), where (XX) can be (MS), (PT) or blank



Photo 12 - External view of model TS-BL0280-80W-X-XXXX(XX), also represent of models TS-BL0270-70W-X-XXXX(XX), TS-BL0260-60W-X-XXK(XX), TS-BL0250-50W-X-XXXX(XX), TS-BL0240-40W-X-XXK(XX), TS-BL0230-30W-X-XXK(XX), where (XX) can be (MS) or blank, and model TS-BL0280-80W-X-MV-XXXX(XX), where (XX) can be (MS), (PT) or blank

